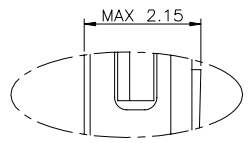
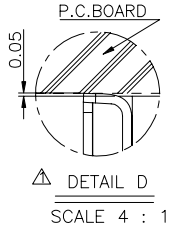
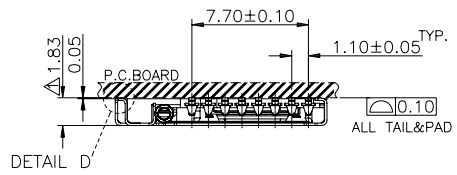
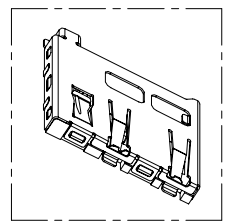


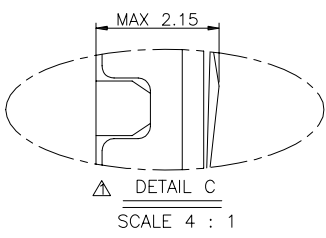
△ RECOMMENDED PCB PATTERN LAYOUT TOLERANCE: ±0.05



DETAIL A
SCALE 4 : 1
CARD PUSH POSITION



3D VIEWS



DETAIL C
SCALE 4 : 1

- MATERIAL :
INSULATOR:HIGH TEMPERATURE THERMOPLASTIC. UL94V-0.
CONTACT:COPPER ALLOY.
SHELL:STAINLESS STEEL.
DETECT PIN:COPPER ALLOY.
COIL SPRING: STAINLESS STEEL.
CRANK AXLE:STAINLESS STEEL.
SLIDE:HIGH TEMPERATURE THERMOPLASTIC. UL94V-0.
LOCK PIN:STAINLESS STEEL.
- PLATING :
CONTACT: Selective Gold 5u" and 15u"
DETECT PIN: 1u" min. Au PLATED
SHELL: 5u" min. Au IN SOLDER TAIL AREA.
- ELECTRIACL CHARACTERISTIC:
CONNECT RESISTANCE:40 MILLIONMS/PIN Max.
INSULATION RESISTANCE:1000 MEGAOHMS Min.
VOLTAGE WITHSTAND:500V AC for 1minute
- MECHANICAL CHARACTERISTIC:
CONTACT MATING FORCE:3Kgf Max.
CONTACT UNMATING FORCE:100gf Min.
CYCLE LIFE:10000 TIMES

RELATION OF SWITCHES TO MICRO SD(TRANS FLASH)
CARD ATTACHMENT CONDITION

CARD ATTACHMENT CONDITION	CARD DETECT SWITCH	SITUATION DEPICTION
CARD NOT ATTACHED	CLOSED	9&10 SHORT
CARD ATTACHED	OPEN	9&10 OPEN

Pin No.	Name	Type	DESCRIPTION
1	DAT2	I/O/PP	Data Line [bit2]
2	CD/DAT3	I/O/PP	Card Detect Data Line [bit3]
3	CMD	PP	Command Response
4	VDD	S	Supply Voltage
5	CLK	I	Clock
6	VSS	S	Supply Voltage Ground
7	DAT0	I/O/PP	Data Line [bit0]
8	DAT1	I/O/PP	Data Line [bit1]

GENERAL TOLERANCE
± 0.25 mm

GENERAL ANGLE TOLERANCE
±3°

Attend
ATTEND TECHNOLOGY INC.
WWW.ATTEND.COM.TW
TEL:886-2-26987028 FAX:886-2-26987078

SCALE: AS SHOWN UNIT: mm
DRAWN Terry 06/06/05
CHECKED / /
APPROVED / /

DRAWN NAME:
Micro SD Socket Push-Push type

PRODUCT NO. 112A-TAA0-R01
FILE NAME: 112A-TAA0-R01

REV.	DESCRIPTION	DATE