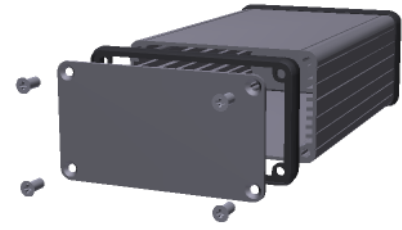
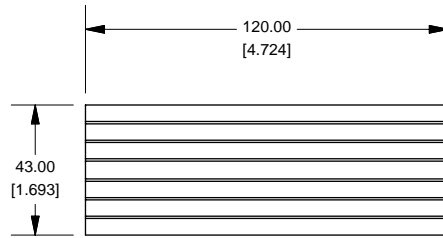
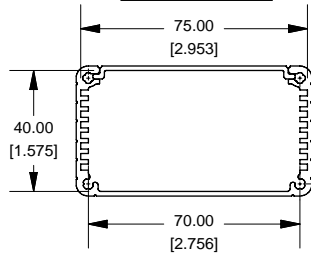
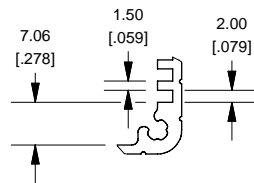


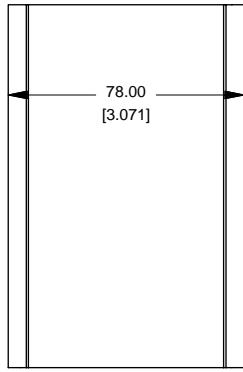
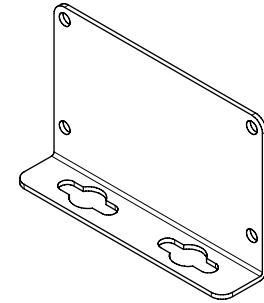
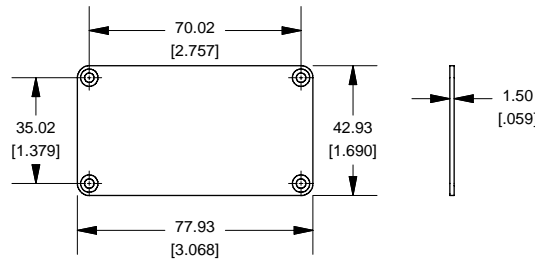
Extrusion



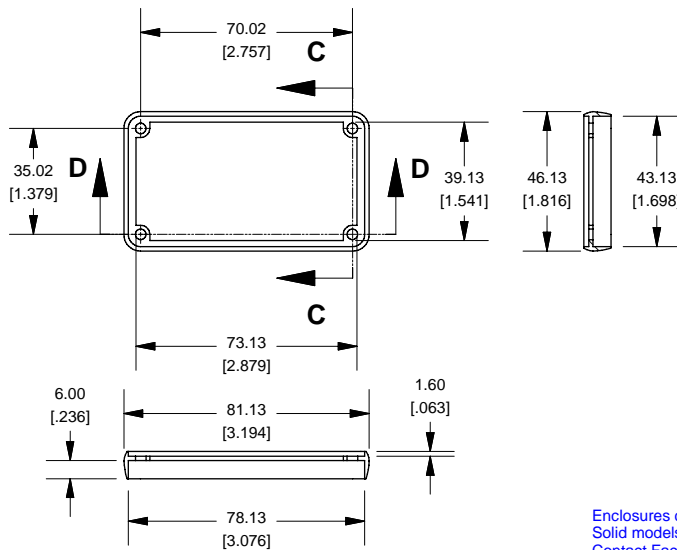
Slot Details



End Plate



Open Bezel



OPTIONAL FLANGE END PANELS 1455KF

NOTE
 Purchased assembly includes box, plastic bezels, end panels, #6 Taptight screws and self adhesive rubber feet.
 Box made from Extruded Aluminum 6063.
 Bezels made with polycarbonate.

1455K1201	
PART NUMBERS	
Clear Anodized	1455K1201
Black Anodized	1455K1201BK
ACCESSORIES	
See website for accessories.	

**HAMMOND
MANUFACTURING™**
1455K1201
www.hammondmfg.com

Enclosures can be Factory Modified (Milling, Drilling, Printing etc.)
 Solid models of this enclosure available in STEP or IGES.
 Contact Factory mjm@hammondmfg.com