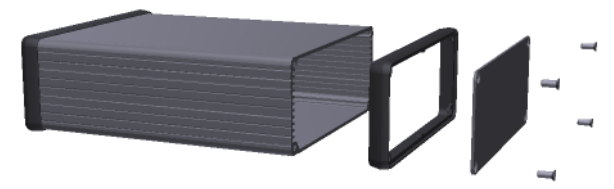
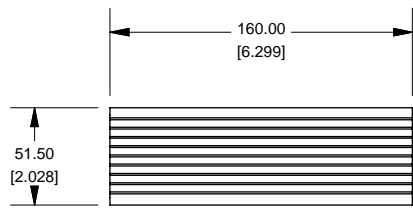
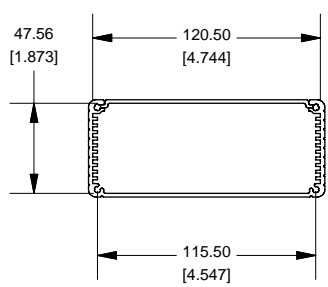
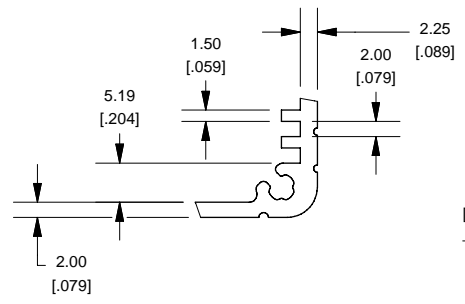


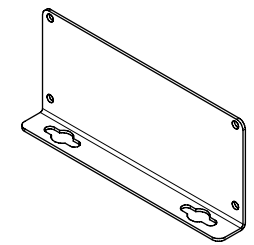
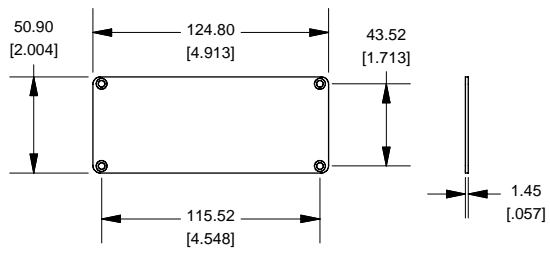
### Extrusion



### Slot Details

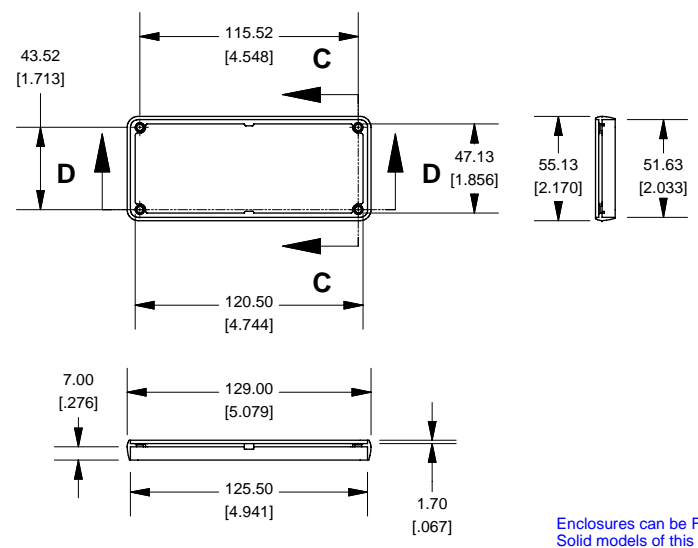


### End Plate



### OPTIONAL FLANGE END PANEL 1455QF

### Open Bezel



**NOTE**  
 Purchased assembly includes box, plastic bezels, end panels, #6  
 Taptight screws and self adhesive rubber feet.  
 Box made from Extruded Aluminum 6063.  
 Bezels made with polycarbonate.

1455Q1601	
PART NUMBERS	
Clear Anodized	1455Q1601
Black Anodized	1455Q1601BK
ACCESSORIES	
See website for accessories.	

**HAMMOND MANUFACTURING™**  
**1455Q1601**  
[www.hammondmfg.com](http://www.hammondmfg.com)

Enclosures can be Factory Modified ( Milling, Drilling, Printing etc. )  
 Solid models of this enclosure available in STEP or IGES.  
 Contact Factory [mjm@hammondmfg.com](mailto:mjm@hammondmfg.com)