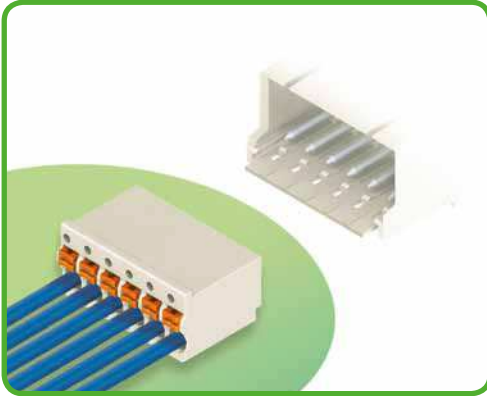


# Standard Female Connectors picoMAX® 3.5



- Universal connection for all conductor types
- Simple, push-in termination of solid and ferruled conductors
- Ability to wire while mated or unmated
- Testing port parallel to conductor entry – tip contact
- Integrated locking latches prevent accidental disconnection

**Technical data:**

Pin Spacing	3.5 mm 0.138 in		
Ratings per	IEC/EN 60664-1		
Overtoltage category	III	III	II
Pollution degree	3	2	2
Rated voltage	160 V	160 V	320 V
Rated surge voltage	2.5 kV	2.5 kV	2.5 kV
Nominal current	10 A	10 A	10 A
Approvals per	UL/CSA*		
Use group UL 1059	B	C	D
Rated voltage	300 V	-	300 V
Nominal current UL	10 A	-	10 A
Nominal current CSA	-	-	-

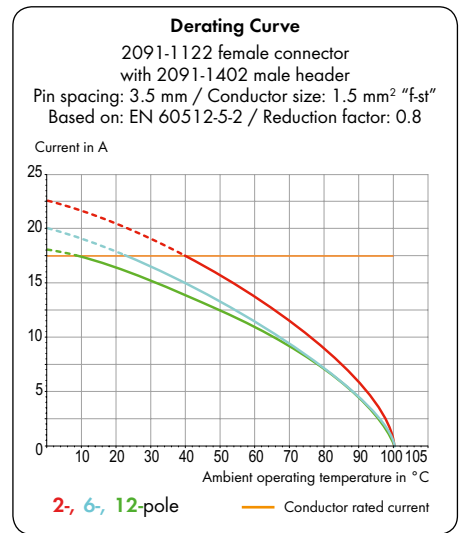
**Conductor data:**

Connection technology	CAGE CLAMP® S	
Conductor size: solid	0.2 - 1.5 mm <sup>2</sup>	
Conductor size: fine-stranded	0.2 - 1.5 mm <sup>2</sup>	
Conductor size: fine-stranded	0.25 - 0.75 mm <sup>2</sup> (with insulated ferrule)	
Conductor size: fine-stranded	0.25 - 1.5 mm <sup>2</sup> (with uninsulated ferrule)	
AWG	24 - 14	14: THHN, THWN
Strip length	8 - 9 mm / 0.31 - 0.35 in	

**Material data:**

Material group	I
Insulation material	Glass-fiber-reinforced polyphthalamide (PPA-GF)
Flammability rating per UL 94	V0
Lower/Upper limit temperature	-60 °C / +100 °C
Clamping spring material	Chrome nickel spring steel (CrNi)
Contact material	Electrolytic copper (E <sub>cu</sub> )
Contact plating	tin-plated

The **picoMAX® pluggable connection system** includes connectors without breaking capacity in accordance with DIN EN 61984. When used as intended, these connectors shall not be connected/disconnected when live or under load. The circuit design should ensure header pins, which can be touched, are not live when unmated.



**Accessories for picoMAX®:**

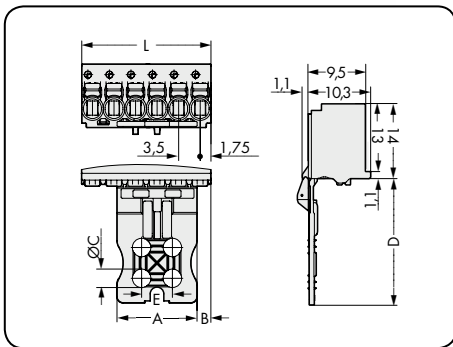
**Page:**

Operating tools	64
Direct printing	68
Gripping plates	65
Coding pins	66
Test pin	64



# Standard Female Connectors picoMAX® 3.5

<p><b>With gripping plate and sliding connector release</b>  <b>Pin spacing: 3.5 mm / 0.138 in</b></p> <p>0.2 - 1.5 mm<sup>2</sup>   AWG 24 - 14          160 V/2.5 kV/2 10 A   300 V/10 A</p>	<p><b>Types of assembly with male headers/connectors</b></p>	
--	--	--

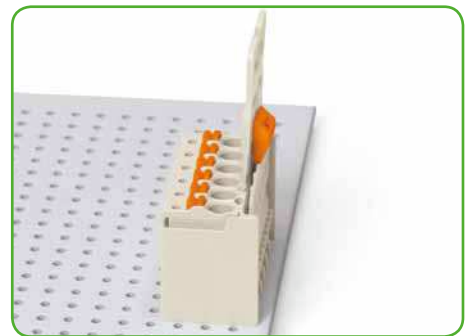
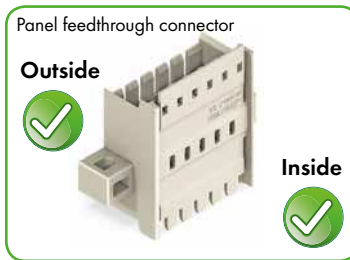
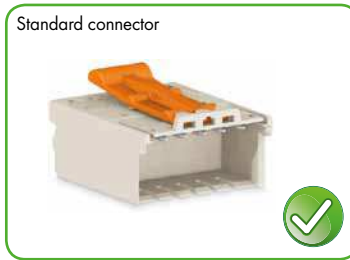


L = pole no. x pin spacing

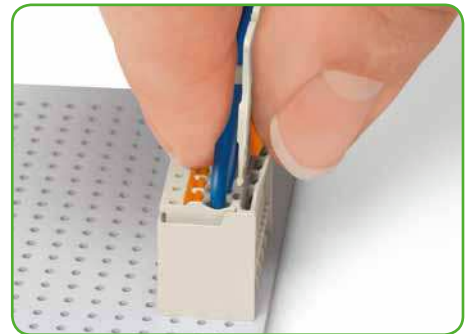
Pole No.	Item No.	Pack. Unit
<b>Female connector with gripping plate and sliding connector release, light gray</b>		
2	2091-1102/002-000	100
3	2091-1103/002-000	100
4	2091-1104/002-000	100
5	2091-1105/002-000	50
6	2091-1106/002-000	50
8	2091-1108/002-000	50
10	2091-1110/002-000	50
12	2091-1112/002-000	50

**Gripping plate dimensions (in mm):**

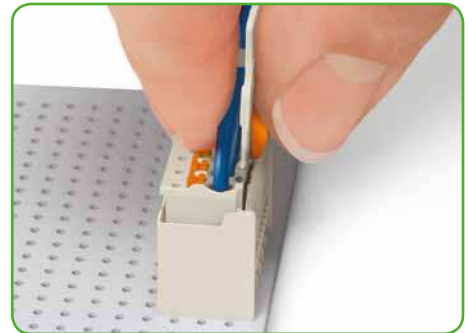
Pole No.	A	B	C	D	E
2	6	2.00	-	17	-
3	6	2.25	-	17	-
4	6	2.25	-	17	-
5	13	2.25	3.0	20	5
6	13	2.25	3.0	20	5
8	13	5.75	3.0	20	5
10	27	2.25	4.2	25	8
12	27	5.75	4.2	25	8



Male header mated to a female connector with gripping plate and sliding connector release.



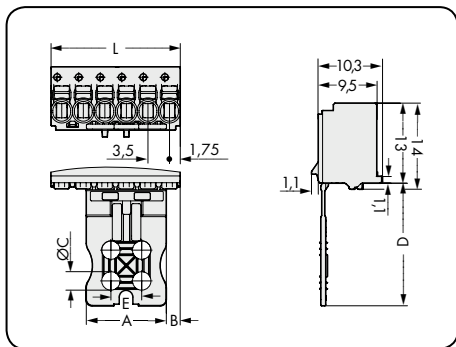
Push down sliding connector release (gripping plate) to open the locking latch.



Pull out female connector with gripping plate from male header.

# Standard Female Connectors picoMAX® 3.5

<p><b>With gripping plate</b> Pin spacing: 3.5 mm / 0.138 in</p> <p>0.2 - 1.5 mm<sup>2</sup>   AWG 24 - 14 160 V/2.5 kV/2 10 A   300 V/10 A</p>	<p><b>Types of assembly</b> with male headers/connectors</p>	
---	--	--

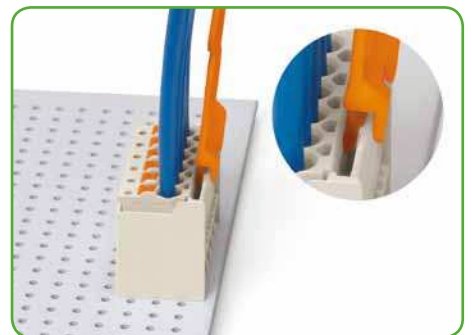
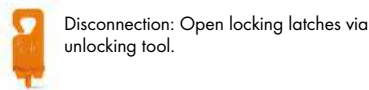
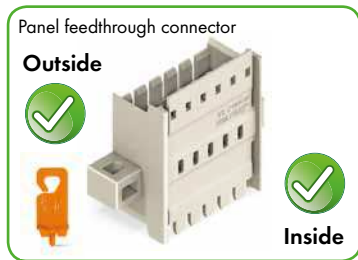
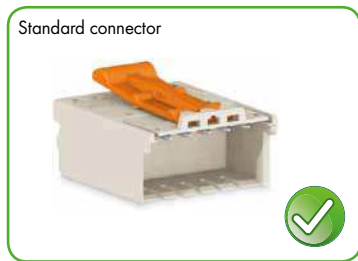


L = pole no. x pin spacing

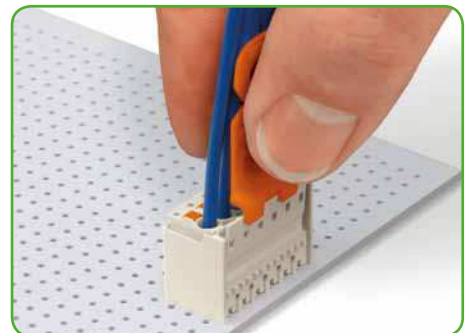
Pole No.	Item No.	Pack.	Unit
<b>Female connector with gripping plate, light gray</b>			
2	2091-1102	100	
3	2091-1103	100	
4	2091-1104	100	
5	2091-1105	50	
6	2091-1106	50	
8	2091-1108	50	
10	2091-1110	50	
12	2091-1112	50	
<b>Product Accessories</b>			
Unlocking tool (2092-1630)			64

**Gripping plate dimensions (in mm):**

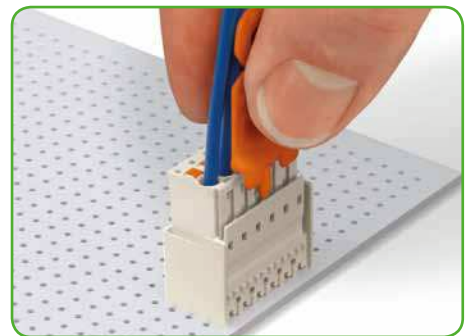
Pole No.	A	B	C	D	E
2	3	2.00	-	17	-
3	6	2.25	-	17	-
4	6	2.25	-	17	-
5	13	2.25	3.0	20	5
6	13	2.25	3.0	20	5
8	13	5.75	3.0	20	5
10	27	2.25	4.2	25	8
12	27	5.75	4.2	25	8



Disconnecting female connector via unlocking tool. Plug unlocking tool into the male header's locking latch.



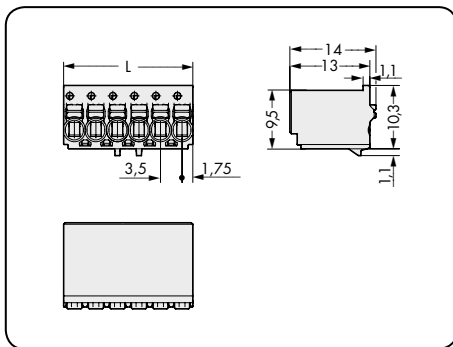
Insert unlocking tool until it hits backstop. Wedge opens locking latch.



Pull on both unlocking tool and conductors to remove female connector from male header.

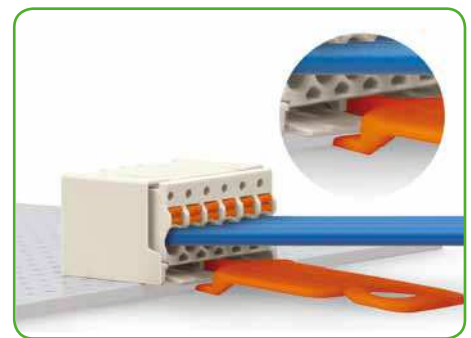
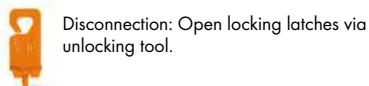
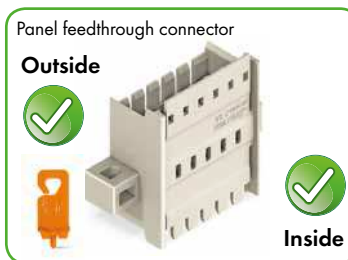
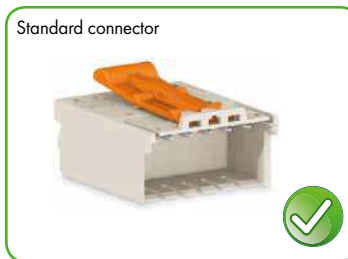
# Standard Female Connectors picoMAX® 3.5

<p><b>Pin spacing: 3.5 mm / 0.138 in</b></p>		<p><b>Types of assembly with male headers/connectors</b></p>
<p>0.2 - 1.5 mm<sup>2</sup> 160 V/2.5 kV/2 10 A</p>	<p>AWG 24 - 14 300 V/10 A</p>	



L = pole no. x pin spacing

Pole No.	Item No.	Pack. Unit
<b>Female connector, light gray</b>		
2	2091-1122	200
3	2091-1123	200
4	2091-1124	200
5	2091-1125	200
6	2091-1126	100
8	2091-1128	100
10	2091-1130	100
12	2091-1132	100
<b>Product Accessories</b>		<b>Page</b>
Unlocking tool (2092-1630)		64



Disconnecting female connector via unlocking tool. Plug unlocking tool into the male header's locking latch.



Insert unlocking tool until it hits backstop. Wedge opens locking latch.



Pull on both unlocking tool and conductors to remove female connector from male header.

3.5