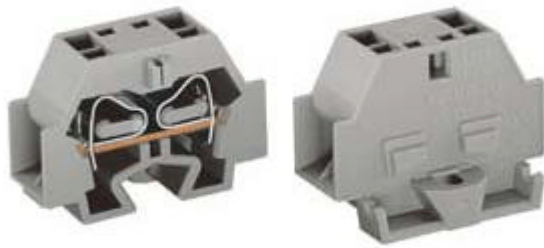


Item no.: 262-331
 Product description: 4-CONDUCTOR TERMINAL BLOCK;
 LATERAL MARKING; WITH MOUNTING
 FEET 209-123 FOR TS 35; SIDE-ENTRY;
 CAGE CLAMP®CONNECTION;
 HORIZONTAL TYPE



Packing unit 100 2*50 pieces

Cross section from [mm ²]	0,08 mm ²
Cross section to [mm ²]	4 mm ²
Cross section from [AWG]	28 AWG
Cross section to [AWG]	12 AWG
Connection method	CAGE CLAMP®CONNECTION
Voltage CSA	300/600 V
Voltage UL	300/600 V
Current UL	20/5 A
Current CSA	20/5 A
Measured voltage EN	630 V
Measured shock voltage	8 kV
Pollution degree	3
Current intensity EN	32 A
Weight	6,83 g
Color	grey
Wiring type	Side-entry
No. of connection Points	4
No. of potentials	1
Height	23 mm
Height	0,906 in
Width	12 mm
Width	0,472 in
Depth	33,5 mm
Depth	1,32 in
Strip length from	9 mm
Strip length to	10 mm
Strip length	0,37 in

	Admission office	Approval no.	Voltage [V]	Current [A]	Cross section [mm ²]
262-331	BBJ	B/12/696/03	630	32	4
262-331	BV	07436/C0			0,08-4
262-331	CCA	DK96-00357	630	32	4
262-331	CSA	18677-45	300/600	20/5	26-12
262-331	CSM	017956	630	32	4
262-331	DEMKO	120039/03		24	4
262-331	Dep.MaE	CS4590N	300	34	

262-331	DNV	E6998	630	32	4
262-331	FTZU	08Q040/Ex91.0158	600	20/5	12-28
262-331	GL	17295-00HH	630	32	4
262-331	KEMA	94.71117.02	660		0,08-4
262-331	KR	HMB05880-EL002	630	32	32
262-331	LR	91/20242(E3)	750	35	4
262-331	NEMKO	L94015	500		4
262-331	PRS	TE/1219/880590/98	630	32	4
262-331	RMR	99.00007.250	630	32	4
262-331	RosTesT	B09523	630	32	4
262-331	UL	E45172	300/600	20/5	28-12
262-331	VDE	2098ÜG,Bl.1	660		4

Sorting criteria: admission office - approval number

© WAGO Kontakttechnik GmbH & Co. KG

Specifications are subject to changes and errors may be expected