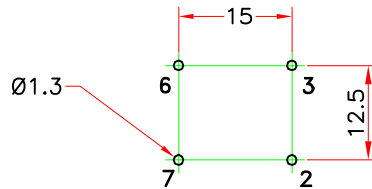


Viewed On Component Side



## TECHNICAL DATA :

Core : Toroid  $\emptyset$  25 /  $\emptyset$  15 / H 10  $\mu$ i 6000 Ferrite Material

Wire :  $\emptyset$ 0.315 Grade 1 Class F

Rated Current Per Winding : 1A referred to 250V – 50Hz and +60°C ambient temperature

Rated Inductance Per Winding : 47mH –30% +50% at 10KHz , 0.1mA

Rated DC Resistance Per Winding ( Typical) : 750m $\Omega$

Test Voltage Between Windings : 1500VAC – 50Hz

Climatic Category : DIN GKC (–40 to +125°C; humidity cat. C)

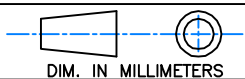
Case Material : PBT at 30% Fibreglass UL94V0

Packaging Unit : 286 pieces

RoHS compliance  
Please, refer to general catalog for unspecified parameters.

a	
IND	DATE

## Radiohm Specification



Designation : 42V32 1000

Part number : \_\_\_\_\_

Date : 16/11/2005

Preliminary :

Final :

## Customer Specification Approval

Part number : \_\_\_\_\_

Signature : \_\_\_\_\_

Name : \_\_\_\_\_

Title : \_\_\_\_\_

Date : \_\_\_\_\_