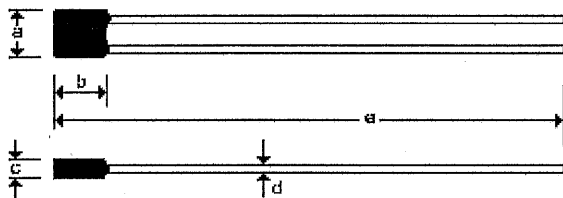


‘A-F’ SERIES THERMAL CUTOFFS

(Rohs compliance)

SPECIFICATION



| | | | | | |
|-----|-----|-----|-----|--------|----|
| | a | b | c | d | e |
| mm. | 6.2 | 6.3 | 2.5 | Ø 0.54 | 70 |
| +/- | 0.5 | 0.5 | 0.3 | 0.02 | 3 |

AUPO thermal cutoffs series "A" are nonresetting, thermally sensitive devices designed to provide temperature protection with four separate temperature ratings. Each fuse incorporates a fusing system which is enclosed and sealed with an epoxy resin to provide mechanical, electrical, corrosion, humidity and aging protection.

| Model No. | TF (°C) | Fusing-off temperature (°C) | TH (°C) | TM (°C) | In (A) | Un (V ac) | Safety approval | | | | | |
|-----------|---------|-----------------------------|---------|---------|--------|-----------|-----------------|-----|-----|-----|-----|-----|
| | | | | | | | UL | TUV | CUL | VDE | CCC | PSE |
| A1-F | 102 | 98 ±2 | 79 | 203 | 2 | 250 | ● | ● | ● | ● | ● | ● |
| A2-F | 115 | 112 ±3 | 92 | | | | ● | ● | ● | ● | ● | ● |
| A3-F | 125 | 120 ±3 | 101 | | | | ● | ● | ● | ● | ● | ● |
| A4-F | 130 | 126 ±2 | 107 | | | | ● | ● | ● | ● | ● | ● |
| A5-F | 135 | 131 ±3 | 112 | | | | ● | ● | ● | ● | ● | ● |
| A7-F | 138 | 135 ±2 | 115 | | | | ● | ● | ● | ● | ● | ● |
| A8-F | 150 | 145 ±3 | 126 | | | | ● | ● | ● | ● | ● | ● |

● Approved ○ Pending

UL & CUL no.: E140847

TUV no.: 14007445

VDE no.: 4000 8720

CCC: 2002 0102 0500 4008

PSE no.: JET0749-32001-1003; JET0749-32001-1004; JET0749-32001-1005; JET0749-32001-1006

Fusing-off temperature: The Fusing-off temperature indicates value measured in silicon oil with a temperature increased by 0.5°C per minute and a detective current 0.1 ampere or less.

Tf - Rated functioning temperature: The temperature at which a Thermal Cutoff changes its state of conductivity to open circuit detection current. The tolerance according to IEC691 is from $+0^{\circ}\text{C}$ to -10°C .

Tc - Holding temperature: The maximum temperature at which a Thermal Cutoff will not cause a change in state of conductivity to open circuit while conducting rated current for 168 hours. This rating is required by safety standards based on IEC691.

Tm - Maximum temperature limit: The maximum temperature at which a Thermal Cutoff can be maintained for 10 minutes without reclosing. This rating is required by safety standards based on IEC691.

In - Rated current: The allowable maximum current which a Thermal Cutoff is able to carry.

Un - Rated voltage: The allowable maximum voltage which a Thermal Cutoff is able to be applied.