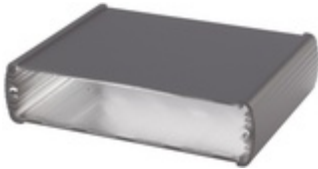


ABP 1300-0100



Alubos 1300 enclosure profiles
Enclosure profiles, closed

Order no.: 84130100

Colour of enclosure group

Black, similar to RAL 9005; special colours on request

Protection class

ABP, ABPH: up to IP 65/DIN EN 60529; ABPU: IP 40/DIN EN 60529

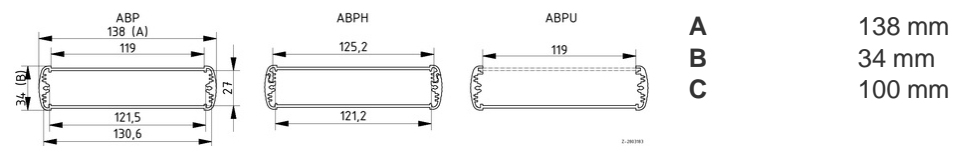
Enclosure material

Extruded profiles: Al Mg Si 0.5 powder-coated; diecast lid: GB Al Si 12, powder-coated; seal: TPE; for details see Technical Information

Scope of delivery: Enclosure profile

Note: C = profile length, special lengths on request.

Accessories: See following pages.



Technical drawings

Catalogue drawing in DXF format:
[84130100_ABP-1300-0100.dxf](#) (1.8 MB)
Catalogue drawing in PDF format:
[84130100_ABP-1300-0100.pdf](#) (60 KB)
3D product data in STEP format:
[Registration necessary](#)
Basic drawing for processing work:
[84130100_ABP-1300-0100-G.dxf](#) (266 KB)

Assembly instructions

[Alubos-ABPH-....-....pdf](#) (124 KB)
[Alubos-ABM-....-SAL\(-BE\).pdf](#) (69 KB)
[Alubos-AB-WL-..pdf](#) (195 KB)
[Alubos-AB-....-HS.pdf](#) (67 KB)

Chapter download

[Alubos_GB.pdf](#) (1.1 MB)

Accessories



End cover

84131000 [ABD 1300](#) For AB 1300



Mounting lid with removable aluminium cap

84132000 [ABM 1300 AL](#) For AB 1300



Mounting lid with hinged aluminium flap

84134000 [ABM 1300 SAL](#) For AB 1300



EMC seals

84201315 [DI 1300-EMV](#) For AB 1300



Seals, ultramarine

84201314 [DI 1300-5002](#) For AB 1300



Seals, fire red

84201311 [DI 1300-3000](#) For AB 1300



Seals, rape yellow

84201312 [DI 1300-1021](#) For AB 1300



Seals, patina green

84201313

[DI 1300-6000](#)

For AB 1300



Seals UL 94 V0

84201319*

[DI 1300-V0](#)

For AB 1300



Wall brackets, sheet steel

84005000

[AB-WL](#)

For AB 600/800/1000/1300



Self-adhesive rubber feet, black

84006700

[AB - GF](#)

Polyurethane, 65-75 Shore Black

