

# AK500/..DS-5.0-H-GREY



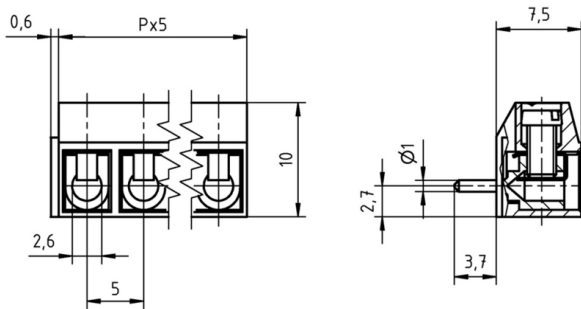
## Technical Data

Wire sizes		Insulating Material	
Solid min	0.2 mm <sup>2</sup>	Material	PA 6.6
Solid max	1.5 mm <sup>2</sup>	Flammability Class	UL 94 V-0
Stranded (flexible) min	0.2mm <sup>2</sup>	<b>Temperatures</b>	
Stranded (flexible) max	1.5 mm <sup>2</sup>	Operating Temperature	-30 °C - 105 °C
Stranded with Ferrule min	0.2 mm <sup>2</sup>	Store Temperature	-40 °C - 105 °C
Stranded with Ferrule max	1.5 mm <sup>2</sup>	<b>Wave Soldering Process</b>	
<b>Dimensions</b>		Soldering Temperature, recommended	265 °C
Stripped Length	5.0 mm	Peak Soldering Time, recommended	3-4 s
PCB Hole Diameter	1.3 mm	<b>Reflow Process</b>	
<b>Materials</b>		Soldering Temperature, recommended	-
Clamp	Brass	Peak Soldering Time, recommended	-
Wire Guard	Stainless Steel		
Screw	Steel		

## Colours

	GREY, RAL 7016
	BLUE, RAL 5015


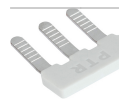

Colours according to RAL, there may be variations on colour due to production conditions. Special colours on request.



## Order Data (Spacing 5.0 mm)

Poles	Width (mm)	Article Designation	Article Number	PU
2	10.60	AK500/2DS-5.0-H-GREY	50500020171 G	250
3	15.60	AK500/3DS-5.0-H-GREY	50500030171 G	250
4	20.60	AK500/4DS-5.0-H-GREY	50500040171 G	250
5	25.60	AK500/5DS-5.0-H-GREY	50500050171 G	250
6	30.60	AK500/6DS-5.0-H-GREY	50500060171 G	250
7	35.60	AK500/7DS-5.0-H-GREY	50500070171 G	250
8	40.60	AK500/8DS-5.0-H-GREY	50500080171 E	100
9	45.60	AK500/9DS-5.0-H-GREY	50500090171 E	100
10	50.60	AK500/10DS-5.0-H-GREY	50500100171 E	100
11	55.60	AK500/11DS-5.0-H-GREY	50500110171 E	100
12	60.60	AK500/12DS-5.0-H-GREY	50500120171 E	100

## Accessoires

Figure	Designation	Article Number
	Bridge, 2-pole, insulated, BRI/2-5.0/5.08-LIGHT GREY	Art.-Nr. 50000000006
	Bridge, 3-pole, insulated, BRI/3-5.0/5.08-LIGHT GREY	Art.-Nr. 50000000007
	Bridge, 2-pole, BR/2-5.0/5.08-L7.0	Art.-Nr. 50000000008

See pages 282 ff for detail and general accessories and see pages 12/13 concerning services.

## Ratings

UseGroup	C <sup>RU</sup> US			VDE	
	B	C	D		
Rated Voltage	300 V	-	300 V	250 V	
Rated Current	15 A	-	10 A	17.5 A	
Rated Wire Size				min	max
- solid	AWG 22-14	-	AWG 22-14	0.5 mm <sup>2</sup>	1.5 mm <sup>2</sup>
-stranded	AWG 22-14	-	AWG 22-14	0.5 mm <sup>2</sup>	1.5 mm <sup>2</sup>
Torque	0.40 Nm	-	0.40 Nm	0.40 Nm	
Screw Size	M2.6	-	M2.6	M2.6	
Test Voltage	1.60 kV	-	1.60 kV	2.0 kV	