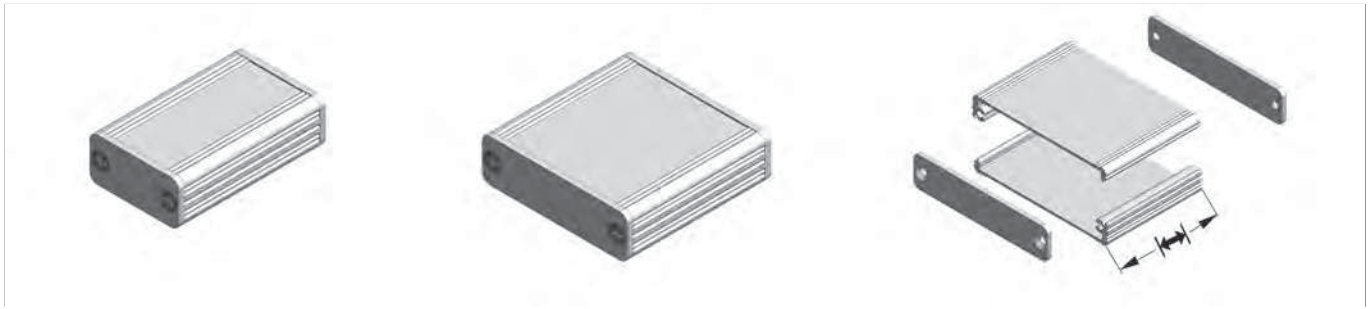


Miniature aluminium casing also for D-Sub



- casing tubes made of aluminium sections which are slotted into each other and screwed together
- the tubes form a guide groove in the centre for insertion of a printed circuit board or installation plate with a thickness of 1.8 mm, lateral in the profile until 1.6 mm
- while using the corresponding case D-Sub connectors can be mounted without front panel
- supplied as demounted kit incl. 2 mm cover plates and mounting material
- cutouts, special lengths and surface treatments upon request

<p>D-Sub 9-pin → f.con "I"</p>	<p>art. no.</p>	<p>art. no.</p>
<p>AKG 33 16 ...</p>	<p>AKG 33 20 ...</p>	<p>AKG 33 24 ...</p>
<p>D-Sub 15-pin → f.con "I"</p>	<p>art. no.</p>	<p>art. no.</p>
<p>AKG 41 16 ...</p>	<p>AKG 41 20 ...</p>	<p>AKG 41 24 ...</p>
<p>D-Sub 25-pin → f.con "I"</p>	<p>art. no.</p>	<p>art. no.</p>
<p>AKG 55 16 ...</p>	<p>AKG 55 20 ...</p>	<p>AKG 55 24 ...</p>
<p>please indicate: ... $\left[\right]$ 50 80 100 mm</p>		<p>... surface SA = black anodised ME = natural colour anodised</p>

Profile in metre lengths → M 34

M 27

EMC-seals
Combination cases
Cooling case
Tube cases

→ M 49 – 51 Design case Secco
→ M 11 – 17 Design case Rail
→ M 35 – 39 Design case Frame
→ M 21 – 25 Design case Eurotainer

→ M 42
→ M 47
→ M 43 – 44
→ M 46