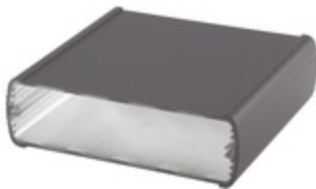


ABP 1000-0100



Alubos 1000 enclosure profiles
Enclosure profiles, closed

Order no.: 84100100

Colour of enclosure group

Black, similar to RAL 9005; special colours on request

Protection class

ABP, ABPH: up to IP 65/DIN EN 60529; ABPU: IP 40/DIN EN 60529

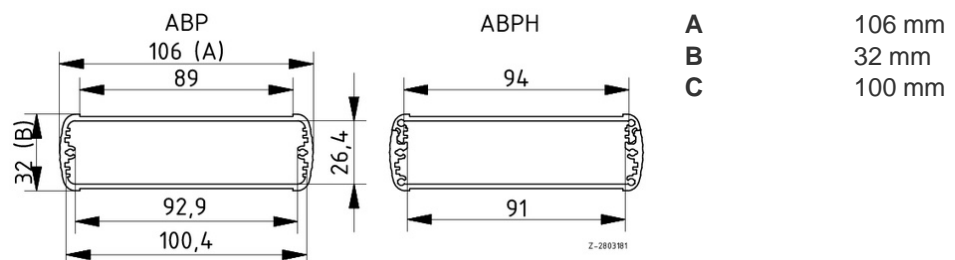
Enclosure material

Extruded profiles: Al Mg Si 0.5 powder-coated; diecast lid: GB Al Si 12, powder-coated; seal: TPE; for details see Technical Information

Scope of delivery: Enclosure profile

Note: C = profile length, special lengths on request.

Accessories: See following pages.



Technical drawings

Catalogue drawing in DXF format:
[84100100_ABP-1000-0100.dxf](#) (1.1 MB)
Catalogue drawing in PDF format:
[84100100_ABP-1000-0100.pdf](#) (110 KB)
3D product data in STEP format:
[Registration necessary](#)
Basic drawing for processing work:
[84100100_ABP-1000-0100-G.dxf](#) (283 KB)

Assembly instructions

[Alubos-ABPH-....-....pdf](#) (124 KB)
[Alubos-ABM-....-SAL\(-BE\).pdf](#) (69 KB)
[Alubos-AB-WL-..pdf](#) (195 KB)
[Alubos-AB-....-HS.pdf](#) (67 KB)

Chapter download

[Alubos_GB.pdf](#) (1.1 MB)

Accessories



End cover

84101000 [ABD 1000](#) For AB 1000



Mounting lid with removable aluminium cap

84102000 [ABM 1000 AL](#) For AB 1000



Mounting lid with hinged aluminium flap

84104000 [ABM 1000 SAL](#) For AB 1000



Mounting lid with removable aluminium cap and compartment for 9V block battery

84102100 [ABM 1000 AL BE](#) For AB 1000



Mounting lid with hinged aluminium flap and compartment for 9V block battery

84104100 [ABM 1000 SAL-BE](#) For AB 1000



Mounting lid with infrared-permissive plastic cap

84103000 [ABM 1000 IR](#) For AB 1000



Mounting lid with infrared-permissive plastic cap and compartment for 9V block battery



84103100 [ABM 1000 IR BE](#) For AB 1000



EMC seals

84201015 [DI 1000-EMV](#) For AB 1000



Seals, ultramarine

84201014 [DI 1000-5002](#) For AB 1000



Seals, fire red

84201011 [DI 1000-3000](#) For AB 1000



Seals, rape yellow

84201012 [DI 1000-1021](#) For AB 1000



Seals, patina green

84201013 [DI 1000-6000](#) For AB 1000



Seals UL 94 V0

84201019* [DI 1000-V0](#) For AB 1000



Wall brackets, sheet steel



84005000 [AB-WL](#)

For AB 600/800/1000/1300



Wall brackets, adjustable, sheet steel

84105000 [AB-1000 WLW](#)

For AB 1000/1040



Mounting clamps

84006500 [AB 1000 MKL](#)

For AB 1000

84006300 [AB-MKL](#)

For AB 600/800/1000



Self-adhesive rubber feet, black

84006700 [AB - GF](#)

Polyurethane, 65-75 Shore Black