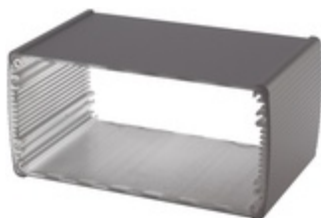


ABP 1680-0200



Alubos 1680 enclosure profiles
Enclosure profiles, closed

Order no.: 84680200

Colour of enclosure group

Black, similar to RAL 9005; special colours on request

Protection class

ABP, ABPH: up to IP 65/DIN EN 60529; ABPU: IP 40/DIN EN 60529

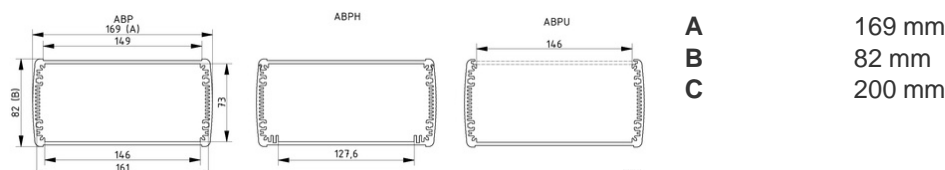
Enclosure material

Extruded profiles: Al Mg Si 0.5 powder-coated; diecast lid: GB Al Si 12, powder-coated; seal: TPE; for details see Technical Information

Scope of delivery: Enclosure profile

Note: C = profile length, special lengths on request.

Accessories: See following pages.



Technical drawings

Catalogue drawing in DXF format:
[84680200_ABP-1680-0200.dxf](#) (1.8 MB)
Catalogue drawing in PDF format:
[84680200_ABP-1680-0200.pdf](#) (60 KB)
3D product data in STEP format:
[Registration necessary](#)
Basic drawing for processing work:
[84680200_ABP-1680-0200-G.dxf](#) (1.3 MB)

Assembly instructions

[Alubos-ABPH-....-....pdf](#) (124 KB)
[Alubos-ABM-....-SAL\(-BE\).pdf](#) (69 KB)
[Alubos-AB-WL-..pdf](#) (195 KB)
[Alubos-AB-....-HS.pdf](#) (67 KB)

Chapter download

[Alubos_GB.pdf](#) (1.1 MB)

Accessories



End cover

84168100

[ABD 1680](#)

For AB 1680



EMC seals

84206815

[DI 1680-EMV](#)

For AB 1680



Seals, ultramarine

84206814

[DI 1680-5002](#)

For AB 1680



Seals, fire red

84206811

[DI 1680-3000](#)

For AB 1680



Seals, rape yellow

84206812

[DI 1680-1021](#)

For AB 1680



Seals, patina green

84206813

[DI 1680-6000](#)

For AB 1680



Seals UL 94 V0

84206819*

[DI 1680-V0](#)

For AB 1680



Wall brackets, sheet steel

84008000 [AB-WL 3](#)

For AB 1600/1680/2070



Handle / Tip-up bow, hinged

84200000 [AB 2000 HS](#)

For AB 2070



Self-adhesive rubber feet, black

84006700 [AB - GF](#)

Polyurethane, 65-75 Shore Black

