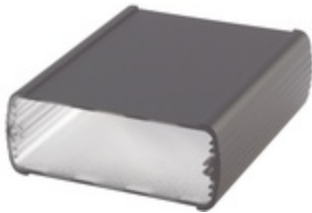


ABP 800-0200



Alubos 800 enclosure profiles
Enclosure profiles, closed

Order no.: 84080200

Colour of enclosure group

Black, similar to RAL 9005; special colours on request

Protection class

ABP, ABPH: up to IP 65/DIN EN 60529; ABPU: IP 40/DIN EN 60529

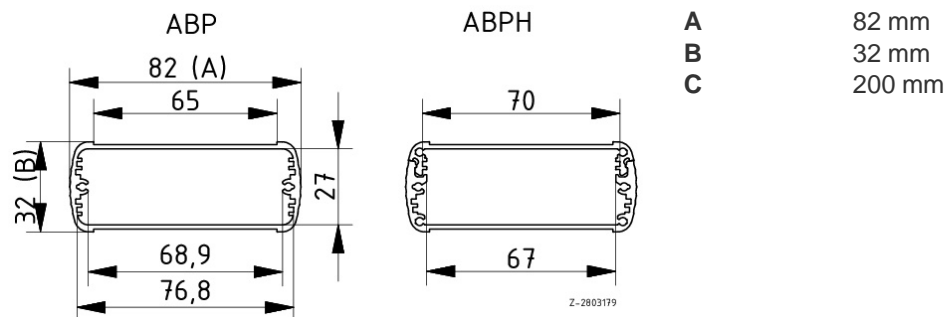
Enclosure material

Extruded profiles: Al Mg Si 0.5 powder-coated; diecast lid: GB Al Si 12, powder-coated; seal: TPE; for details see Technical Information

Scope of delivery: Enclosure profile

Note: C = profile length, special lengths on request.

Accessories: See following pages.



Technical drawings

Catalogue drawing in DXF format:
[84080200_ABP-800-0200.dxf](#) (1.1 MB)
Catalogue drawing in PDF format:
[84080200_ABP-800-0200.pdf](#) (107 KB)
3D product data in STEP format:
[Registration necessary](#)
Basic drawing for processing work:
[84080200_ABP-800-0200-G.dxf](#) (260 KB)

Assembly instructions

[Alubos-ABPH-....-....pdf](#) (124 KB)
[Alubos-ABM-....-SAL\(-BE\).pdf](#) (69 KB)
[Alubos-AB-WL-..pdf](#) (195 KB)
[Alubos-AB-....-HS.pdf](#) (67 KB)

Chapter download

[Alubos_GB.pdf](#) (1.1 MB)

Accessories



End cover

84081000 [ABD 800](#) For AB 800



Mounting lid with removable aluminium cap

84082000 [ABM 800 AL](#) For AB 800



Mounting lid with hinged aluminium flap

84084000 [ABM 800 SAL](#) For AB 800



Mounting lid with removable aluminium cap and compartment for 9V block battery

84082100 [ABM 800 AL BE](#) For AB 800



Mounting lid with hinged aluminium flap and compartment for 9V block battery

84084100 [ABM 800 SAL-BE](#) For AB 800



Mounting lid with infrared-permissive plastic cap

84083000 [ABM 800 IR](#) For AB 800



Mounting lid with infrared-permissive plastic cap and compartment for 9V block battery



84083100 [ABM 800 IR BE](#) For AB 800



EMC seals

84200815 [DI 800-EMV](#) For AB 800



Seals, ultramarine

84200814 [DI 800-5002](#) For AB 800



Seals, fire red

84200811 [DI 800-3000](#) For AB 800



Seals, rape yellow

84200812 [DI 800-1021](#) For AB 800



Seals, patina green

84200813 [DI 800-6000](#) For AB 800



Seals UL 94 V0

84200819* [DI 800-V0](#) For AB 800



Wall brackets, sheet steel



84005000 [AB-WL](#)

For AB 600/800/1000/1300



Wall brackets, adjustable, sheet steel

84085000 [AB-800 WL](#)

For AB 800/820



Mounting clamps

84006400 [AB 800 MKL](#)

For AB 800

84006300 [AB-MKL](#)

For AB 600/800/1000



Self-adhesive rubber feet, black

84006700 [AB - GF](#)

Polyurethane, 65-75 Shore Black