

Alu-Topline

Enclosure profiles, horizontally-divided



ATPH 1850-0300

Order no.: 92850300

* = Available on request.

Characteristics

Colour of enclosure group
Natural-coloured anodised

Protection class
IP 54

Enclosure Material
Extruded profiles: Al Mg Si 0.5 anodised; plastic lid: ABS; for details see Technical Information

Scope of delivery
Enclosure profile, 2 parts

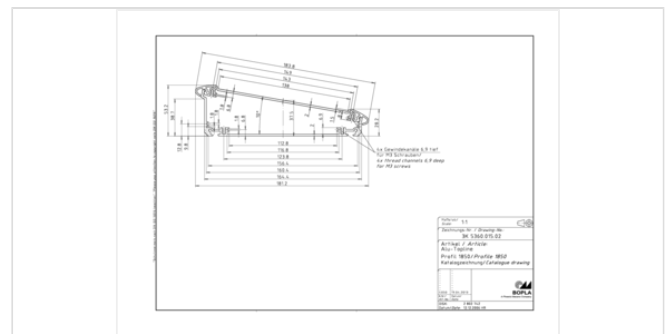
Note

Special lengths on request.

Dimensions

Dimensions
181.2 x 53.2 x 300 mm

Product drawing



Important!

To compensate for pressure when temperatures change and cause moisture in the enclosure, we recommend that you use a pressure compensation element.

» Additional information

Technical documentation / Downloads

Technical drawings

3D product data in STEP format: Registration necessary
Drawing for mechanical processing: 92850300 ATPH-1850-0300-G.dxf
(424.9 KB)

Product information

Alu-Topline GB.pdf (326.4 KB)

Milling contours are shown here as a DXF file. (Sub D, USB, HDMI, cable glands, ...)

Product drawing in PDF format: 92850300 ATPH-1850-0300.pdf (41.9 KB)

Product drawing in DXF format: 92850300 ATPH-1850-0300.dxf (490.4 KB)

Matching accessories



End cover

92050024 ATD 1850-7024

For ATPH 1850

Graphite grey

92050005 ATD 1850-9005

For ATPH 1850

Black



Seals for ingress protection IP 54

92050000 AT 1850 DI

For ATPH 1850



Wall fastening, aluminium

92800300 AT 1800-0300 WB

For ATPH-0300



Universal wall fitting

92830024 AT 0300-7024 UWB

For ATPH-0300

Graphite grey



Insulating strip for PCB mounting on the profile

92000100 AT-IS 00020

Length: 101,5 mm



Rubber feet

84006700 AB - GF

Polyurethane, 65-75 Shore

Black