

LAURA-XP lenses for CREE XP-E LEDs



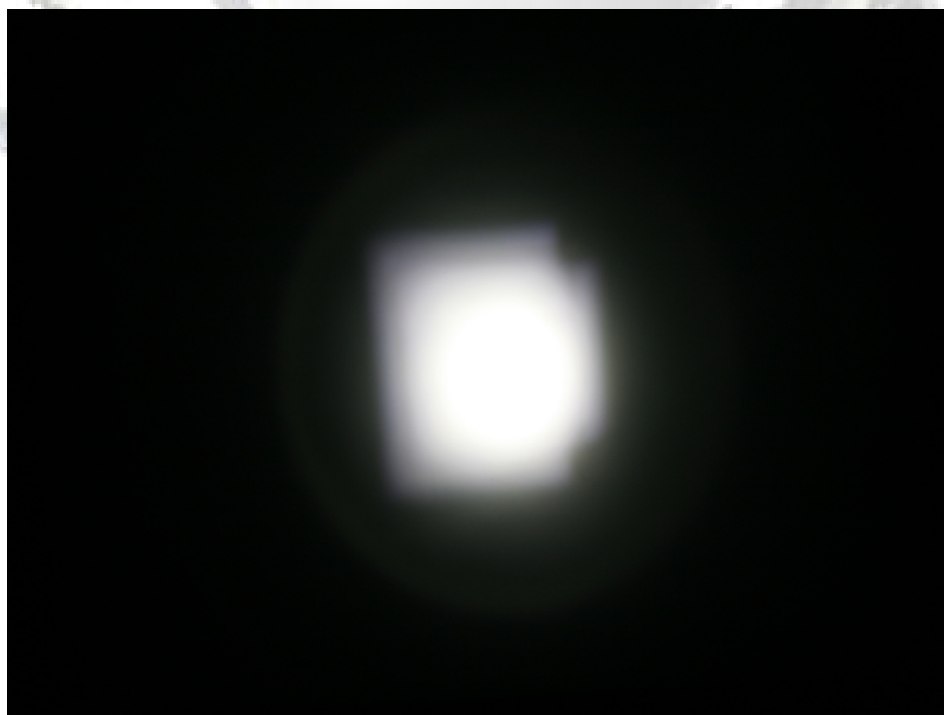
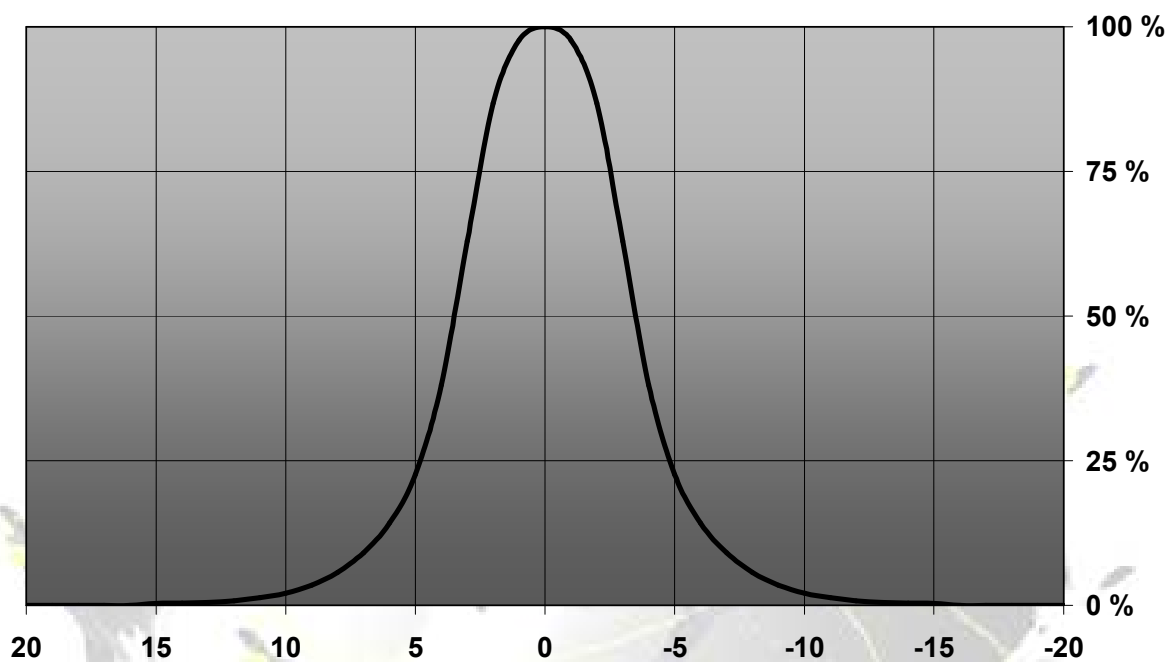
- Designed & optimized for Cree XP-E series of LEDs
- Lens material optical grade PMMA with high UV and temperature resistance (105°C/220°F). Allows use of high current and temperature conditions.
- Best available optical efficiency, up to 90%, with an extremely good cutoff of light
- Integrated holder. Fastening to heat sink with a PU foam adhesive tape of automotive grade
- Please check fastening details from this link:
(http://www.ledil.com/datasheets/DataSheet_TAPE.pdf)
- Compact dimensions 21.6 x 21.6 mm. Square form enables easy build of matrix without any gaps between lenses.

LENS TYPES

NAME	ORDERING CODE	FWHM Angle
LAURA REAL SPOT	CA11353_Laura-RS-XP-tape	±3.5°
LAURA SMOOTH SPOT	CA11643_Laura-SS-XP-tape	Coming soon
LAURA DIFFUSER	CA11360_Laura-D-XP-tape	±7°
LAURA MEDIUM	CA11355_Laura-M-XP-tape	Coming soon
LAURA OVAL	CA11365_Laura-O-XP-tape	Coming soon

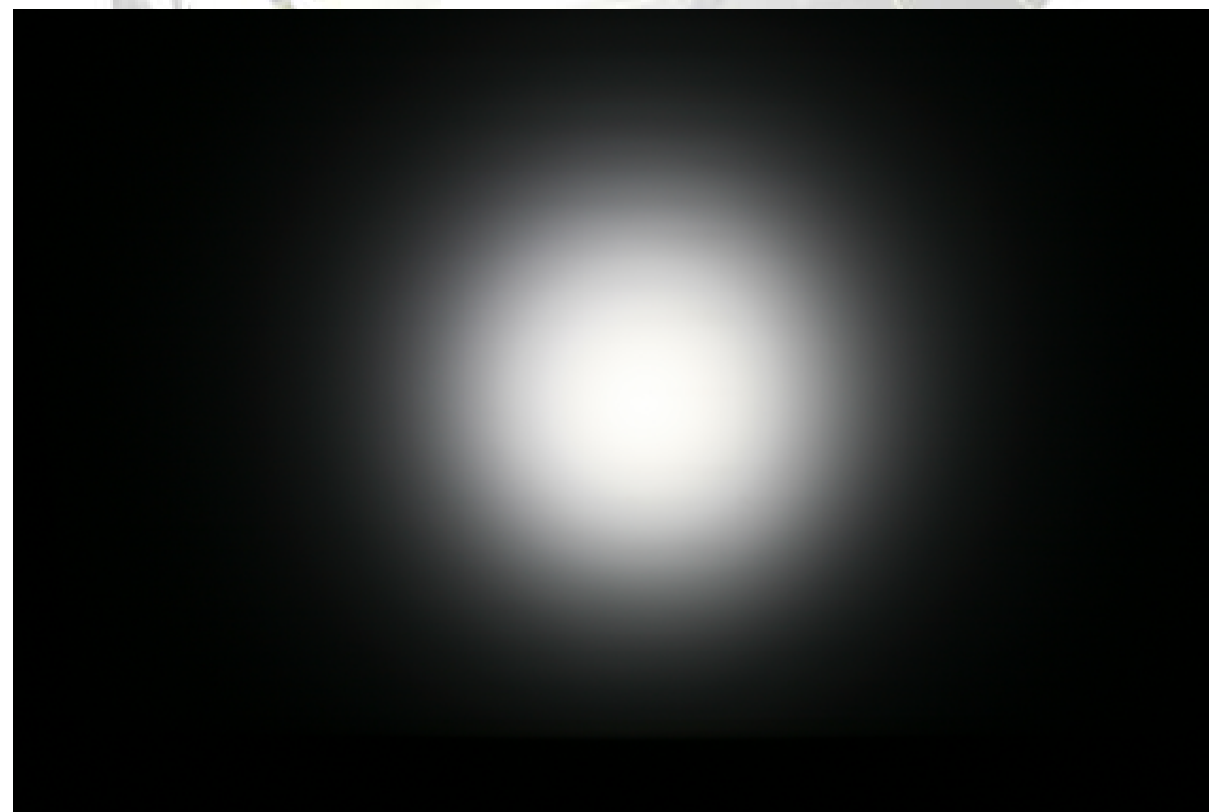
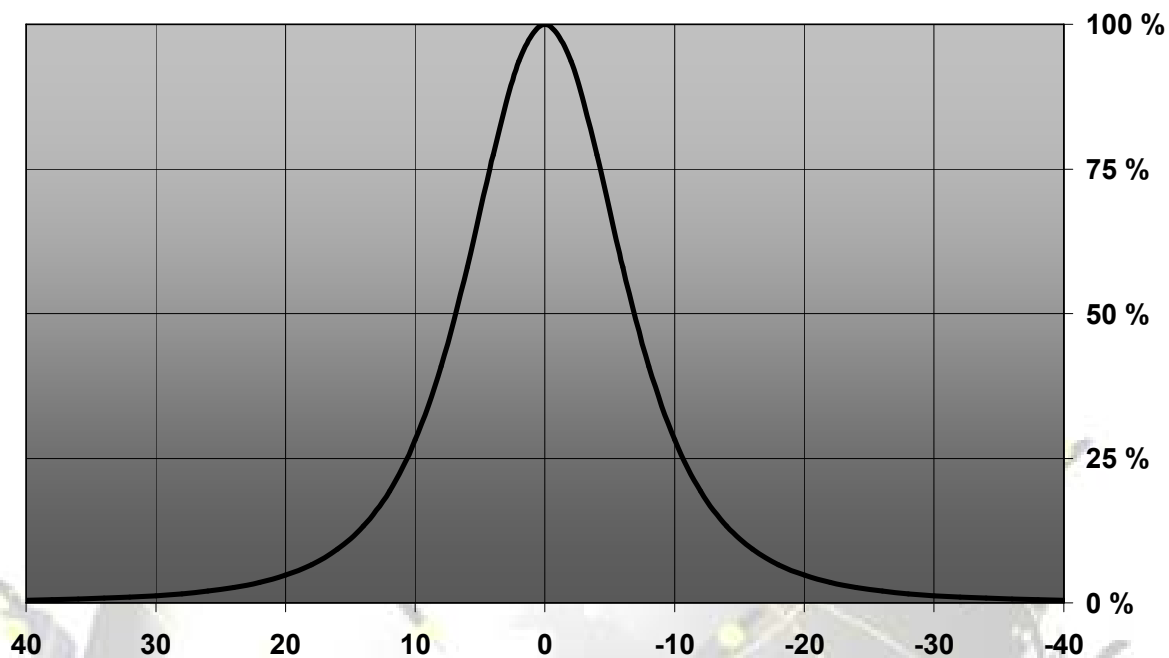
MEASUREMENTS

Relative Intensity of CA11353_Laura-RS-XP-tape



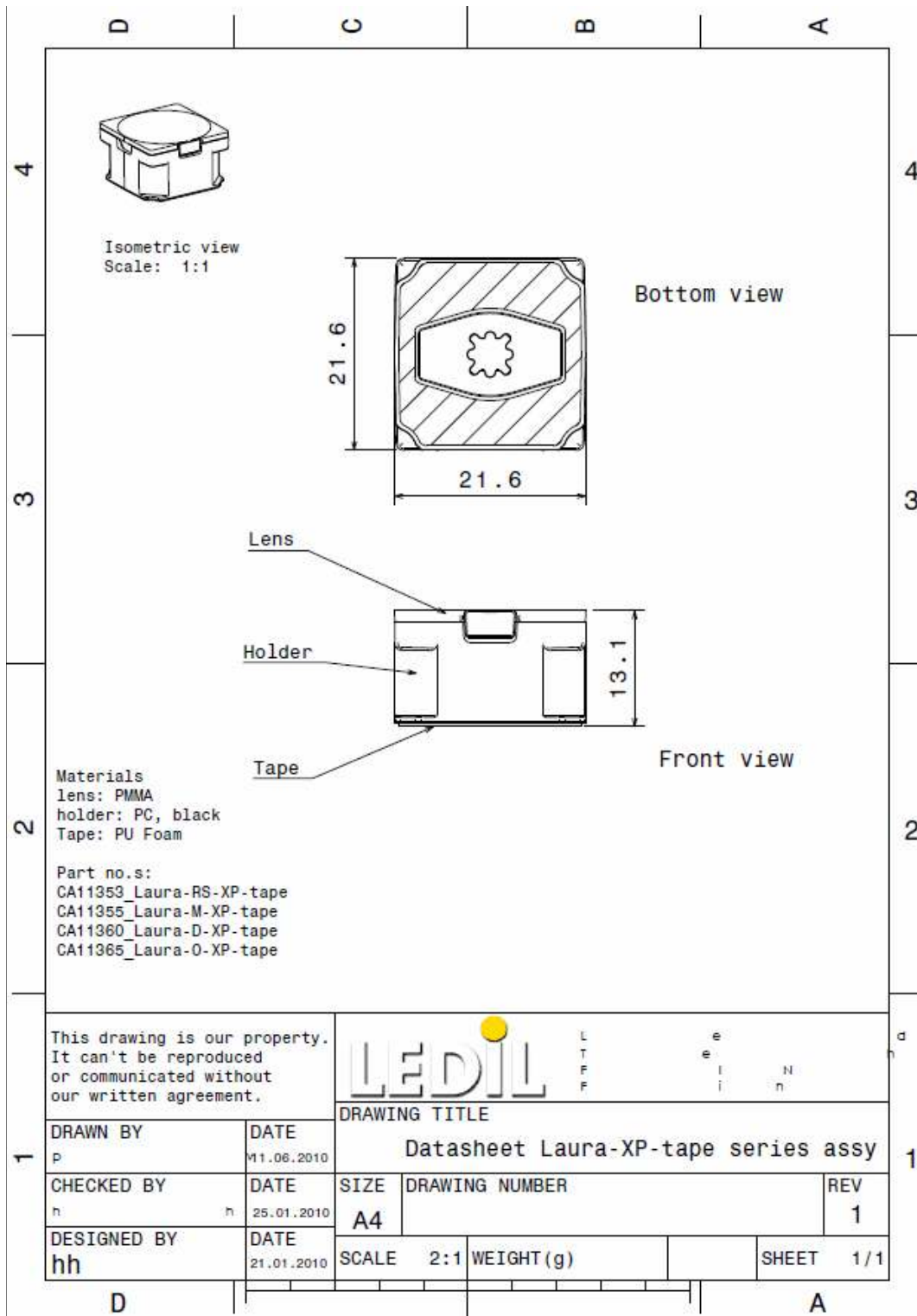
© Ledil Oy – PRELIMINARY - Subject to change without prior notice

Relative intensity of CA11360_Laura-D-XP-tape



© Ledil Oy – PRELIMINARY - Subject to change without prior notice

DRAWINGS



This drawing is our property. It can't be reproduced or communicated without our written agreement.			
DRAWING TITLE			
DRAWN BY p	DATE 11.06.2010	Datasheet Laura-XP-tape series assy	
CHECKED BY h	DATE 25.01.2010	SIZE A4	REV 1
DESIGNED BY hh	DATE 21.01.2010	SCALE 2:1	WEIGHT(g)
		SHEET 1/1	

© Ledil Oy – PRELIMINARY - Subject to change without prior notice