



Carbon Rotary Potentiometers - 20 mm size Singles

Type
P20EC

Mechanical data

Rotation angle: $300^\circ \pm 5^\circ$
 Operating torque: 0.4 ± 1.5 Ncm
 Permissible torque at end stop: 80 Ncm max
 Permissible axial spindle load: 100 N
 (5 sec max)

Weight, std. spindle: ~ 11 g

Electrical data

Rated dissipation @ 40°C: 0.4 W linear law
 0.2 W non-linear law

Limiting element voltage: 500 VDC

Insulation resistance: ≥ 5 G Ω

Insulation voltage: 1000 VAC

Rated resistance: E3 Series; optional E6 Series

• linear law: 100R to 4M7

• non-linear law: 1K0 to 2M2

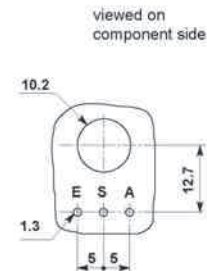
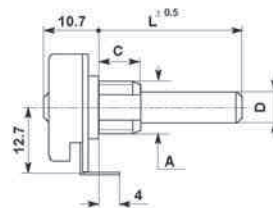
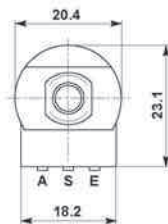
Tolerance on rated resistance:

• 100R to 1M0: $\pm 20\%$

• over 1M0: $\pm 30\%$

• optional (1K0 to 1M0): $\pm 10\%$

Resistance law: A, B, C, F, T, S, X



P20EC

Standard spindle & bush

L = 50 mm, plastic, F1 type

D = 6 mm

A = M10x0.75, C type

C = 8 mm

Spindle and bushing variations

D mm	A mm	Available types		
		Bush	Plastic Spindle	Metal Spindle
6	M10x0.75	C, CE, CEBS	Fixed Plug-in	Fixed
4	M10x0.75 M7x0.75	C, CE C, CE	Fixed	Fixed

Spindle and bushing details, chassis piercing: see p. 108 to 111

Normalised spindles: see p. 112

Radiom