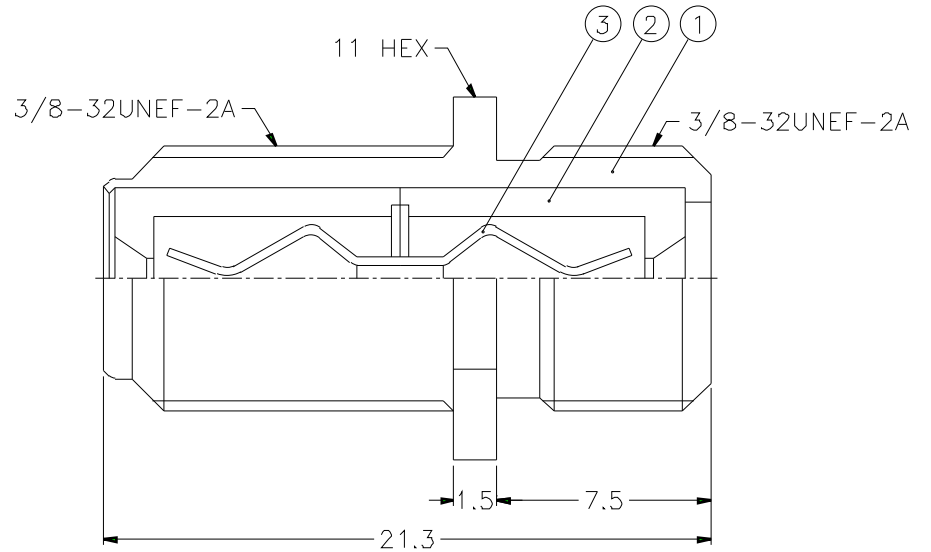
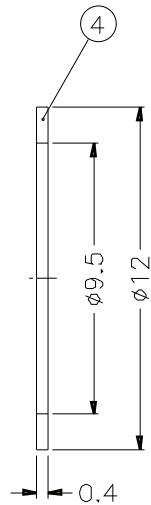
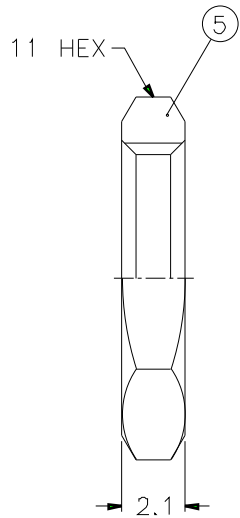


1			2			3			4			5			6			7			8		
REVISIONS																							
ISS	ZONE	DESCRIPTION\PER REQUEST\DATE																					



NOTES: FINISH (PLATING THICKNESS IN MICRO-INCHES)

- 1. BRASS PER QQ-B-626
- 2. BRASS PER QQ-B-613
- 3. NICKEL PL. 80 MIN. THICK OVER COPPER STRIKE
- 4. NICKEL PL. 80 MIN. THICK OVER COPPER PL. 300 MIN. THICK
- 5. BRIGHT TIN PL. 80 MIN. THICK OVER NICKEL PL. 50 MIN. THICK OVER COPPER PL. 100 MIN. THICK
- 6. ZINC DIECAST

1. MAX. PANEL THICKNESS=3.5mm

DIMENSIONS ARE IN MILLIMETERS			
UNLESS OTHERWISE SPECIFIED TOLERANCES			
0.5-6	=	±0.2	
6-30	=	±0.4	
30-120	=	±0.6	
120-315	=	±1	
315-1000	=	±1.6	
1000-2000	=	±2.4	

PART NO.		F7900Z-NPPT	
APPROVED	DATE	10-11-01'	
CHECKED	DATE	10-11-01'	
DRAWN	DATE	10-11-01'	
FILE NO.			

Amphenol	
TITLE F CONNECTOR	
DRAWING NO. KJ-F7900Z-NPPT	
ITEM NO.	

5	HEX NUT	NOTE 1	NOTE 3	1	HN11-3/8-32X21
4	WASHER	NOTE 2	NOTE 3	1	WS-12/95X04
3	CONTACT PIN	NOTE 1	NOTE 5	1	F7900-NPPT-G
2	INSULATOR	P.P.	NATURAL	2	
1	BODY	NPTE 6	NOTE 4	1	
NO.	DESCRIPTION	MATERIAL	FINISH	Q'TY	DRAWING NO.

1 2 3 4 5 6 7 8