

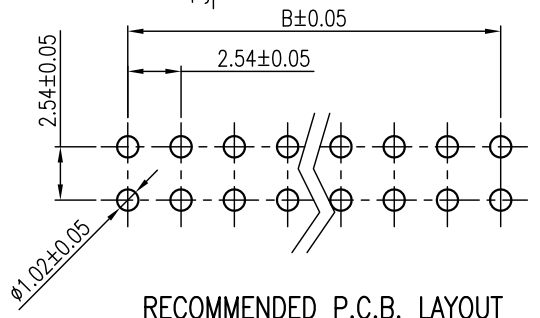
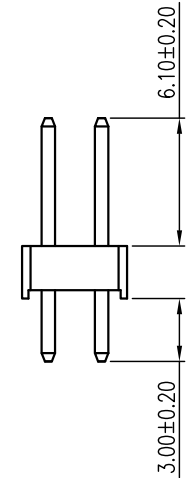
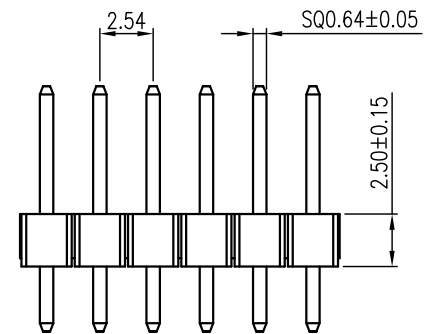
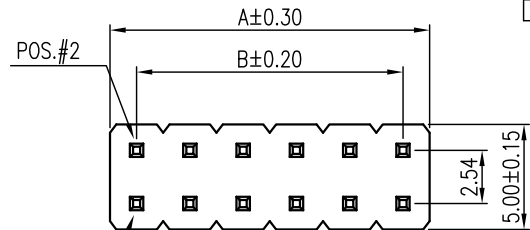
This document is the property of Amphenol Corporation and is delivered on the express condition that is not to be disclosed, reproduced or used, in whole or in part, for manufacture or sale by anyone other than Amphenol Corporation without its prior consent, and that no right is granted to disclose or to use any information in this document.

The marking on this product doesn't contain environmental hazardous materials per Material Specification 55-00259 for Sony GP compliant or per directive 2002/95/EC for RoHS compliant.

**PRELIMINARY RELEASE
SUBJECT TO CHANGE**

REVISIONS				
SYM	ECN No.	DESCRIPTION	DATE	APPROVED
A		RELEASE FOR RoHS	01/10/2005	Bodhi Chih
B	NE-09102	CHANGE VENDOR	06/16/2009	Roger Tsai
C	NE-12098	UPDATE DRAWING	09/06/2012	Roger Tsai
DX1		MODIFIED PACKAGING	01/03/2013	Roger Tsai
DX2		MODIFIED PACKAGING	04/23/2014	Roger Tsai

G800 W 556 XXX EU	2 x 40 = 80	101.6	99.06
G800 W 557 XXX EU	2 x 39 = 78	99.06	96.52
G800 W 558 XXX EU	2 x 38 = 76	96.52	93.98
G800 W 559 XXX EU	2 x 37 = 74	93.98	91.44
G800 W 560 XXX EU	2 x 36 = 72	91.44	88.90
G800 W 561 XXX EU	2 x 35 = 70	88.90	86.36
G800 W 562 XXX EU	2 x 34 = 68	86.36	83.82
G800 W 563 XXX EU	2 x 33 = 66	83.82	81.28
G800 W 564 XXX EU	2 x 32 = 64	81.28	78.74
G800 W 565 XXX EU	2 x 31 = 62	78.74	76.20
G800 W 566 XXX EU	2 x 30 = 60	76.20	73.66
G800 W 567 XXX EU	2 x 29 = 58	73.66	71.12
G800 W 568 XXX EU	2 x 28 = 56	71.12	68.58
G800 W 569 XXX EU	2 x 27 = 54	68.58	66.04
G800 W 570 XXX EU	2 x 26 = 52	66.04	63.50
G800 W 571 XXX EU	2 x 25 = 50	63.50	60.96
G800 W 572 XXX EU	2 x 24 = 48	60.96	58.42
G800 W 573 XXX EU	2 x 23 = 46	58.42	55.88
G800 W 574 XXX EU	2 x 22 = 44	55.88	53.34
G800 W 575 XXX EU	2 x 21 = 42	53.34	50.80
G800 W 576 XXX EU	2 x 20 = 40	50.80	48.26
G800 W 577 XXX EU	2 x 19 = 38	48.26	45.72
G800 W 578 XXX EU	2 x 18 = 36	45.72	43.18
G800 W 579 XXX EU	2 x 17 = 34	43.18	40.64
G800 W 580 XXX EU	2 x 16 = 32	40.64	38.10
G800 W 581 XXX EU	2 x 15 = 30	38.10	35.56
G800 W 582 XXX EU	2 x 14 = 28	35.56	33.02
G800 W 583 XXX EU	2 x 13 = 26	33.02	30.48
G800 W 584 XXX EU	2 x 12 = 24	30.48	27.94
G800 W 585 XXX EU	2 x 11 = 22	27.94	25.40
G800 W 586 XXX EU	2 x 10 = 20	25.40	22.86
G800 W 587 XXX EU	2 x 9 = 18	22.86	20.32
G800 W 588 XXX EU	2 x 8 = 16	20.32	17.78
G800 W 589 XXX EU	2 x 7 = 14	17.78	15.24
G800 W 590 XXX EU	2 x 6 = 12	15.24	12.70
G800 W 591 XXX EU	2 x 5 = 10	12.70	10.16
G800 W 592 XXX EU	2 x 4 = 8	10.16	7.62
G800 W 593 XXX EU	2 x 3 = 6	7.62	5.08
G800 W 594 XXX EU	2 x 2 = 4	5.08	2.54
PART NUMBER	NO. OF CIRCUIT	A	B



- NOTES:**
- INSULATOR: NYLON-6T, UL 94V-0, COLOR- BLACK
 - CONTACT: BRASS, SELECTIVE GOLD PLATED ON CONTACT AREA, G/F OR TIN PLATED ON SOLDERING AREA (LEAD FREE)
 - THIS PRODUCT DOESN'T CONTAIN ENVIRONMENTAL HAZARDOUS MATERIALS PER DIRECTIVE 2002/95/EC FOR RoHS.

PART NO. G800WXXXXXEU
 NO. OF CIRCUIT — CONTACT FINISH
 005: 15 u" GOLD MIN.
 010: 30 u" GOLD MIN.
 018: FULL GOLD FLASH
 025: 5 u" GOLD MIN.
 035: 3 u" OVER ALL GOLD MIN.

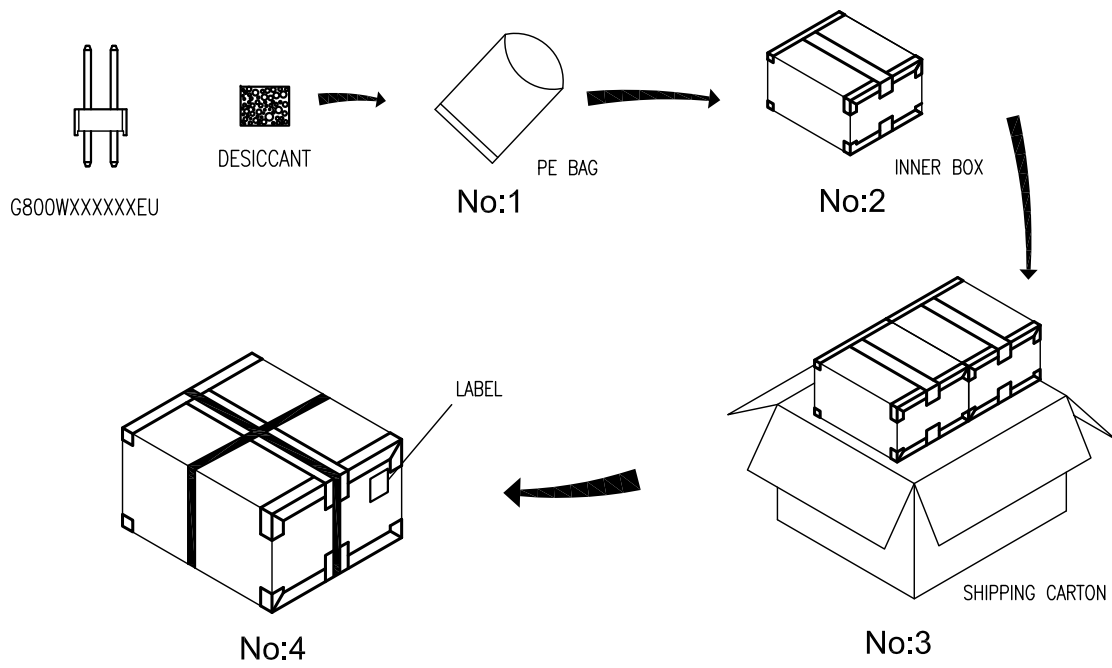
TOLERANCE	APPROVALS	DATE	TITLE		PART No.	
X. ±0.30	DRAWN Aqua Chou	04/23/2014	G800 SERIES, DUAL ROWS HEADER 2.54MM PITCH STRAIGHT PCB MOUNT		Amphenol® Amphenol Corporation Amphenol Taiwan Corporation	
X.X ±0.20	CHECKED Roger Tsai	04/23/2014				
X.XXX ±0.10	APPROVED Roger Tsai	04/23/2014				
ANGULAR ±1°	DWG TYPE CUST DWG	PROJECT CODE HEAD				
UNLESS OTHERWISE SPECIFIED			SCALE NA	SHEET 1 OF 2	DWG No. G800WXXXXXEU_2	REV. DX2

This document is the property of Amphenol Corporation and is delivered on the express condition that is not to be disclosed, reproduced or used, in whole or in part, for manufacture or sale by anyone other than Amphenol Corporation without its prior consent, and that no right is granted to disclose or to use any information in this document.

The marking on this product doesn't contain environmental hazardous materials per Material Specification 55-00259 for Sony GP compliant or per directive 2002/95/EC for RoHS compliant.

**PRELIMINARY RELEASE
SUBJECT TO CHANGE**

REVISIONS				
SYM	ECN No.	DESCRIPTION	DATE	APPROVED
A		RELEASE FOR RoHS	01/10/2005	Bodhi Chih
B	NE-09102	CHANGE VENDOR	06/16/2009	Roger Tsai
C	NE-12098	UPDATE DRAWING	09/06/2012	Roger Tsai
DX1		MODIFIED PACKAGING	01/03/2013	Roger Tsai
DX2		MODIFIED PACKAGING	04/23/2014	Roger Tsai



NOTES:

1. INNER BOX SIZE : 215 X 175 X 150 mm
2. SHIPPING CARTON SIZE : 370 X 230 X 175 mm

G800W 586 XXXEU	2X10=20	300	7	2	4200	4.7	5.4
G800W 588 XXXEU	2X8=16	300	8	2	4800	4.3	5.1
G800W 589 XXXEU	2X7=14	500	6	2	6000	4.7	5.5
G800W 590 XXXEU	2X6=12	1000	4	2	8000	5.4	6.1
G800W 591 XXXEU	2X5=10	1000	6	2	12000	6.6	7.3
G800W 592 XXXEU	2X4=8	2000	3	2	12000	5.4	6.1
G800W 593 XXXEU	2X3=6	2000	5	2	20000	6.8	7.6
G800W 594 XXXEU	2X2=4	2000	5	2	20000	4.5	5.3
P/N	POS.	PCS/ BAG	BAG/ INNER BOX	INNER BOX/ SHIPPING CARTON	QUANTITY (PCS)	N.W. KG	G.W. KG

TOLERANCE	APPROVALS	DATE	TITLE		PART No.		
X. X.X ±0.30 X.XX ±0.20 X.XXX ±0.10	DRAWN Aqua Chou	04/23/2014	G800 SERIES SINGLE, DUAL ROWS HEADER 2.54MM PITCH STRAIGHT PCB MOUNT		Amphenol [®] Amphenol Corporation Amphenol Taiwan Corporation		
	CHECKED Roger Tsai	04/23/2014					
	APPROVED Roger Tsai	04/23/2014					
ANGULAR ±1°	DWG TYPE CUST DWG	PROJECT CODE HEAD	UNIT mm	SCALE NA	SIZE A3	G800WXXXXXEU	
UNLESS OTHERWISE SPECIFIED					SHEET 2 OF 2	DWG No. G800WXXXXXEU_2	REV. DX2

