

命名方法 PART CODE DESIGNATION

种类 CLASS

T - 温度补偿型 (T.C.)
Temperature Compensation Type
H - 高电介常数型 (HI-K)
High dielectric Constant Type
S - 半导体型 (S.C.)
Semi Conductive type

1) T.C. TYPE T.C. 型 (②③)

代码 Code	温度特性 Temperature Characteristic	温度系数 Temperature Coefficient (PPM/°C)	EIA 码 EIA Code	色码 Colour
CH	NPO	0±60	COH	Black 黑
HH	N33	-30±60	S1H	Brown 棕
LH	NB0	-80±60	U1H	Red 红
PH	N150	-150±60	P2H	Orange 橙
RH	N220	-220±60	R2H	Yellow 黄
SH	N330	-330±60	S2H	Green 绿
TH	N470	-470±60	T2H	Blue 蓝
UJ	N750	-750±120	U2J	Violet 紫
SL	N330±500	+350~-1000	S2L	NIL 无

2) HI-K 及 S.C. 型 HI-K & S.C. TYPE (②)

代码 Code	容量变化 Capacitance Change	EIA Code HI-K	EIA Code S.C.
B	±10%	Y5P	Y5P
D	±15%	---	Y5R
E	+22/-56%	Z5U	Y5U
F	+22/-82%	Z5V	Y5V

使用温度范围 Operating Range
只适用于 HI-K 及 S.C. (③)
For HI-K & S.C. only

代码 Code	温度范围 Temperature Range
Y	-25°C ~ +85°C
Z	+10°C ~ +85°C

额定电压 Rated Voltage

代码 Code	额定电压 Rated Voltage
1C	16V _r
1E	25V _r
1H	50V _r
2H	500V _r
3A	1000V _r
3D	2000V _r

标称容量 Rated Capacitance 例: eg.

代码 Code	静电容量 Capacitance
010	1pF
1R5	1.5pF
101	100pF
102	1000pF
223	22000pF

容量公差 Tolerance

代码 Code	容量公差 Tolerance
C	±0.25pF
D	±0.5pF
J	±5%
K	±10%
M	±20%
Z	+80%-20%

主体外径 Body Diameter

代码 Code	最大外径 Max. Body Diameter
05	5.1mm
06	6.5mm
07	7.1mm
08	8.1mm
09	9.5mm
10	10.1mm
11	11.1mm
12	12.5mm
14	14.5mm

导线直径 Lead Diameter

代码 Code	线径 (mm) Diameter
5	0.5 ±0.05
6	0.6 ±0.05/0.05

导线长度 Lead Length

代码 Code	尺寸 Dimension (mm)		
	S	L	K
1	---	15min	---
2	---	25min	---
5	5.0±1.0	---	5.0±1.0
0	10.0±1.0	---	---

导线间距 Lead Spacing

代码 Code	尺寸 Dimension (mm)		
	S	L	K
2	2.5±1.0	2.5±1.0	---
5	5.0±1.0	5.0±1.0	5.0±0.8
7	7.5±1.0	7.5±1.0	7.5±1.0
0	10.0±1.0	10.0±1.0	10.0±1.0

导线形式 Lead Shape

代码 Code	类别 Type	
A	编带 TAPING	弯脚 KINK LEAD
B		直脚 STRAIGHT LEAD
S	散装 BULK	短直角 SHORT STRAIGHT
L		长直脚 LONG STRAIGHT
K		短弯脚 SHORT KINK
D		双弯 DOUBLE CRIMP



最大主体外径 MAX. BODY DIAMETER

高电介质常数型 High Dielectric Constant Type

B特性 B CHARACTERISTIC

容量范围 (PF)	BODY CODE	W.V.			
		50V	500V	1KV	2KV
CAPACITANCE	05	100 ? 1500	—	—	—
	06	1800 ? 2700	100 ? 1000	100 ? 330	100 ? 180
	07	—	—	390 ? 680	220 ? 390
	08	3300 ? 4700	1200 ? 1500	820 ? —	470 ? 560
	09	5600 ? 6800	1800 ? 2700	1000 ? 1800	680 ? 820
	11	8200 ? 10000	3300 ? 3900	2000 ? 2200	1000
	12	—	4700 ? 5600	2700 ? 3300	1500
	14	—	6800	—	2200 ? 2700
	16	—	10000	4700 ? 5600	3300
	20	—	—	10000	4700

E特性 E CHARACTERISTIC

容量范围 (PF)	BODY CODE	W.V.			
		50V	500V	1KV	2KV
CAPACITANCE	05	100 ? 2700	—	—	—
	06	3300 ? 6800	100 ? 1000	100 ? 1000	—
	07	—	1500 ? 2200	1500	—
	08	8200 ? 15000	3300	2200	100 ? 1000
	09	18000 ? 22000	4700 ? 6800	3300 ? 4700	1500 ? 2200
	11	—	—	6800	3300
	12	—	8200 ? 10000	—	—
	14	—	—	8200 ? 10000	4700
	16	—	20000	—	—
	20	—	33000	20000	10000

F特性 F CHARACTERISTIC

容量范围 (PF)	BODY CODE	W.V.			
		50V	500V	1KV	2KV
CAPACITANCE	05	100 ? 5000	—	—	—
	06	5600 ? 10000	100 ? 2200	—	—
	07	12000 ? 15000	3300 ? 4700	100 ? 2200	—
	08	20000 ? 22000	5000 ? 6800	3300	100 ? 2200
	09	33000 ? 40000	—	4700 ? 6800	3300
	11	47000 ? 50000	10000	10000	4700
	12	—	—	—	5000 ? 6800
	14	—	—	—	10000



RICHWELL

最大主体外径 MAX. BODY DIAMETER

半导体型 Semi - Conductive Type

B特性 B CHARACTERISTIC

容量范围 (PF)	BODY CODE	W.V.		
		16V	25V	50V
05		1000	1000	1000
		12000	12000	10000
06		15000	15000	12000
		22000	22000	15000
07		27000	27000	18000
		47000	33000	22000
08		56000	39000	27000
		68000	47000	33000
09	—	—	56000 68000	—
11		82000	82000	39000
		100000	100000	47000
12	—	—	—	56000 68000
14	—	—	—	82000 100000

E特性 E CHARACTERISTIC

容量范围 (PF)	BODY CODE	W.V.		
		16V	25V	50V
05		10000	10000	10000
06		15000	15000	22000
		47000	33000	—
07		56000	47000	33000
		68000	—	—
08		100000	56000	47000
		—	68000	—
09	—	—	100000	56000 68000
11		220000	—	100000
12	—	—	220000	—
14	—	—	—	—

F特性 F CHARACTERISTIC

容量范围 (PF)	BODY CODE	W.V.		
		16V	25V	50V
05		20000	20000	20000
06		33000	33000	33000
		47000	47000	—
07		50000	50000	47000
		100000	68000	—
08		—	100000	50000
		—	—	68000
09		220000	—	100000
11		—	220000	—
12		—	—	—



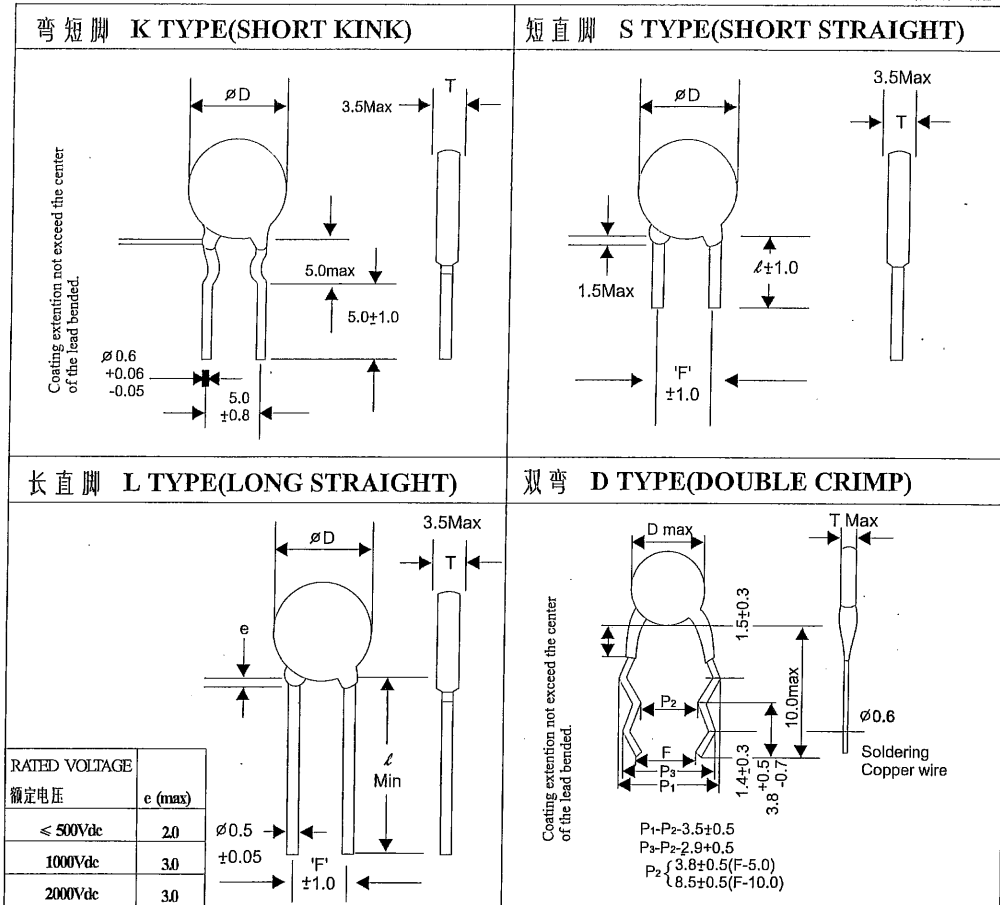
RICHWELL

脚型及包装 SHAPE AND PACKAGE

脚型 SHAPE

散装尺寸规格 BULK PARTS DIMENSIONS

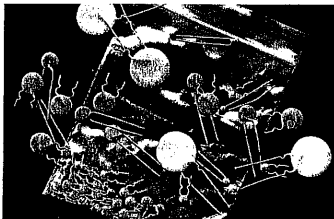
unit: mm



包装 PACKAGE

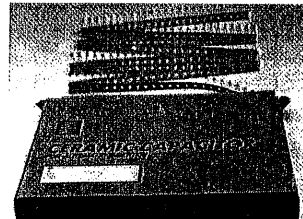
包装方式 PACKAGE FORM

散装 BULK



1,000PCS PER BAG

编带 TAPING



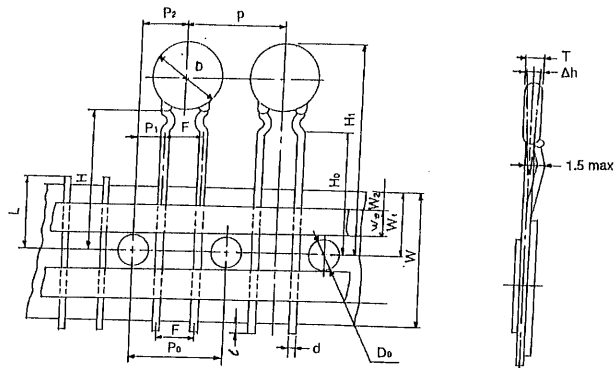
2,000PCS PER AMMO BOX



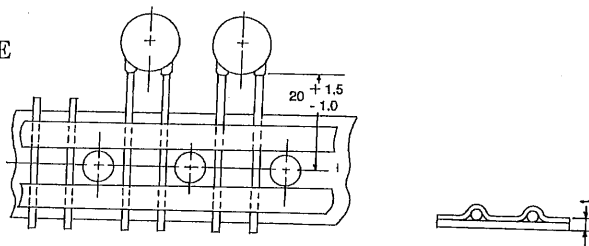
RICHWELL

编带尺寸规格 TAPING PARTS DIMENSIONS

A TYPE: 弯脚型
KINK TYPE



B TYPE: 直脚型
STRAIGHT TYPE



Unit:mm

Item	Symbol	Specification		Remarks
		Value	Tolerance	
Body diameter	D	11.0	max	
Body thickness	T	3.5	max	
Lead-wire diameter	d	0.6	+0.06/-0.05	
Pitch of component	P	12.7	+1.0	
Feed hole pitch	P ₀	12.7	+0.3	Cumulative pitch error:1.0mm/20 pitch
Feed hole centre to lead	P ₁	3.85	+0.7	To be measured at bottom of clinch
Hole centre to component centre	P ₂	6.35	+1.3	
Lead-to -lead distance	F	5.0	+0.8/-0.2	
Component alignment ,F-R	Δh	0	±2.0	
Tape width	W	18.0	+1.0/-0.5	
Hold-down tape width	W ₀	5.0	min	
Hold position	W ₁	9.0	+0.5	
Hold-down tape position	W ₂	3.0	max	
Height of component from tape centre	H	20.0	+1.5/-1.0	
Lead wire clinch height	H ₀	16.0	+0.5	
Component height	H ₁	32.25	max	
Lead wire protrusion	ℓ	1.0	max	
Feed hole diameter	D ₀	4.0	+0.2	
Total tape thickness	t	0.7	+0.2	Groundpaper:0.5±0.1mm
Length of Snipped lead	L	11.0	max	



RICHWELL