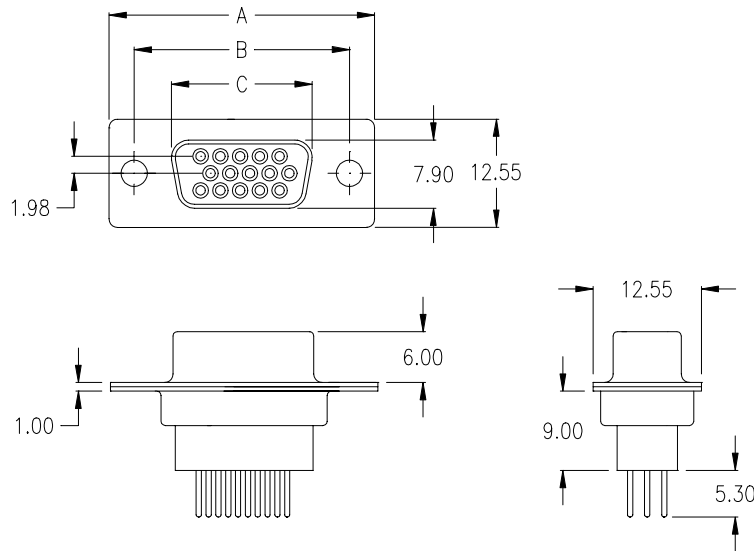


female



Ordering Code

SHF - xxx - B111 - 02 / XXX

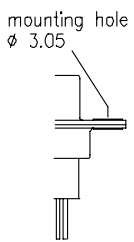
No. of contacts

Option

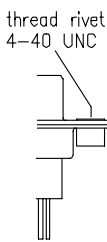
Plating: -02 = tin/gold; General Specification page 64

| No. of contacts | Dimension | | |
|-----------------|-----------------------|-----------------------|-----------------------|
| | A | B | C |
| 015 | <u>30.81</u> 1.213 | <u>24.99</u> .984 | <u>16.33</u> .643 |
| 026 | <u>39.14</u> 1.541 | <u>33.32</u> 1.312 | <u>24.66</u> .971 |
| 044 | <u>53.04</u> 2.088 | <u>47.04</u> 1.852 | <u>38.38</u> 1.511 |
| 062 | <u>69.32</u> 2.729 | <u>63.50</u> 2.500 | <u>54.84</u> 2.159 |

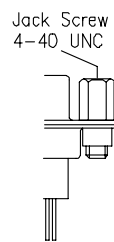
Options



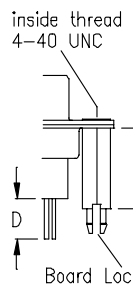
T0



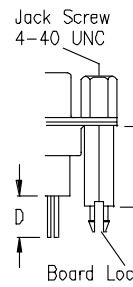
T



TJ



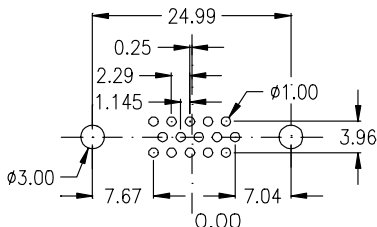
BR



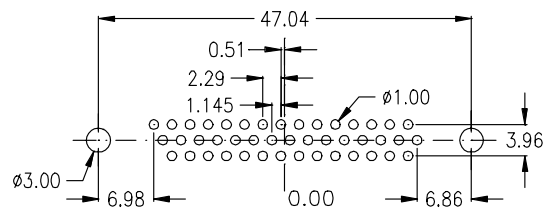
BR J

| D | E | Option |
|------|-------|--------|
| 3,80 | 9,60 | 1 |
| 5,30 | 11,00 | 2 |
| 7,20 | 12,70 | 3 |
| 7,40 | 13,50 | 5 |

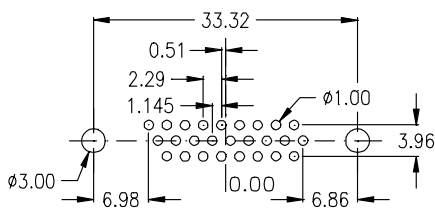
PCB Layout „female“



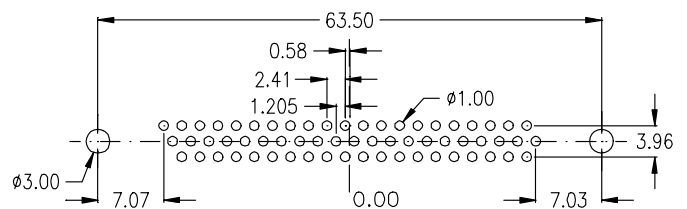
15 pin



44 pin

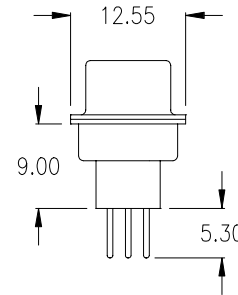
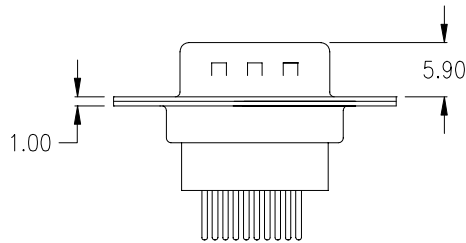
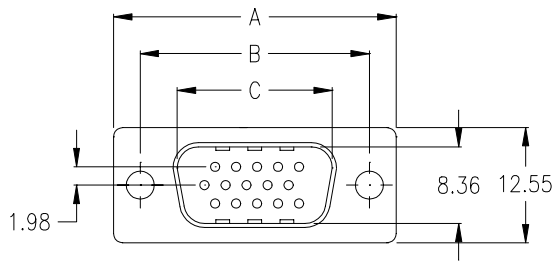


26 pin



62 pin

male



Ordering Code

SHM - xxx - B111 - 22 / XXX

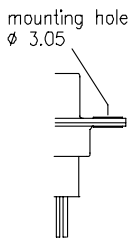
No. of contacts

Option

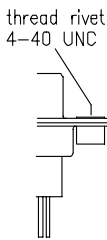
Plating: -22 = gold; General Specification page 64

| No. of contacts | Dimension | | |
|-----------------|----------------|----------------|----------------|
| | A | B | C |
| 015 | 30.81 1.213 | 24.99 .984 | 16.92 .666 |
| 026 | 39.14 1.541 | 33.32 1.312 | 25.25 .994 |
| 044 | 53.04 2.088 | 47.04 1.852 | 38.96 1.534 |
| 062 | 69.32 2.729 | 63.50 2.500 | 55.42 2.182 |

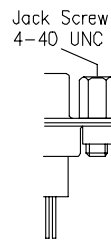
Options



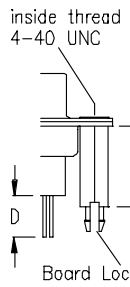
T0



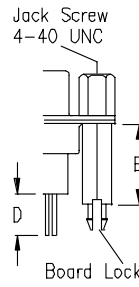
T



TJ



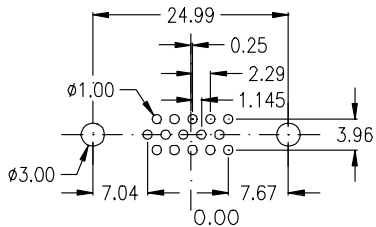
BR



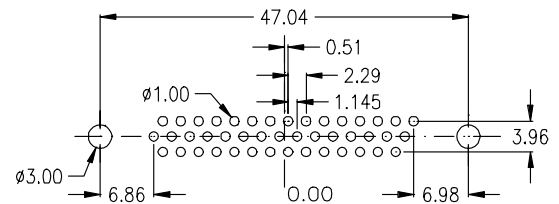
BR_J

| D | E | Option |
|------|-------|--------|
| 3,80 | 9,60 | 1 |
| 5,30 | 11,00 | 2 |
| 7,20 | 12,70 | 3 |
| 7,40 | 13,50 | 5 |

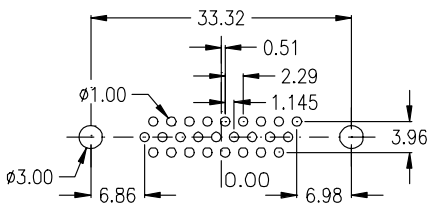
PCB Layout „male“



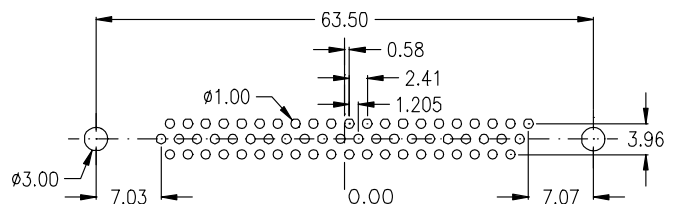
15 pin



44 pin



26 pin



62 pin

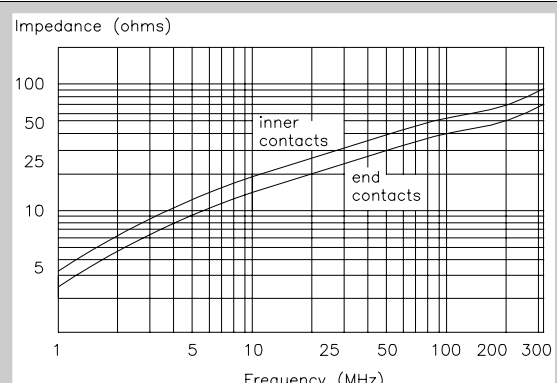
| mechanical data | |
|---|--|
| Mating force per contact | ≤ 3,4 N |
| Unmating force per contact | ≥ 0,2 N |
| Temperature range | -55° C to +105° C |
| Processing temperature SMT and "pin in paste" | +230° C for 60 sec. max. +260° C for 10 sec. max. |
| Moisture absorption from air 50% rh | 0,10% |
| IDC Connector types accept AWG 26 or AWG 28 standard wire | |

| materials and plating | |
|---|--|
| Insulator for wave solder technology, standard black - PC 99 colourful insulator | thermoplastic glassfilled UL 94V – 0 Yellowish brown - Pantone # 131C 15-pos. female Burgundy - Pantone # 235C 25-pos. female Teal - Pantone # 322C 9-pos. male Blue - Pantone # 661C HD 15-pos. |
| female | |
| Insulator for SMT and "Pin-In-Paste" | Nylon 6T UL 94V-0 |
| Shell | Steel, tin plated |
| Bracket | Brass, tin plated |
| Male contact | Brass |
| - plating | -02 = solder side Sn; contact side Au over Ni -22 = solder and contact side Au over Ni |
| Female contact | Phosphor Bronze |
| - plating | -02 = solder side Sn; contact side Au over Ni -22 = solder and contact side Au over Ni |

| electrical data | |
|---|---|
| max. Current rating | 5 A / 25° C 3 A / 70° C (High Density Types 3A) |
| Operating voltage | 250 V |
| Test voltage between contacts | 1000 V / 50/60 Hz / 1 Minute |
| Test voltage between shell and contacts | 1000 V / 50/60 Hz / 1 Minute |
| Resistance between mated contacts | < 30 m Ω |
| Insulation resistance | ≥ 1000 M Ω at 500V DC |
| Dielectric strength | 1000 V AC min. for 1 Minute |
| Volume resistivity | 10 ¹⁶ Ω cm (ASTM-D 257) |

| available performance classes | |
|-------------------------------|--------------------|
| class 1 | 500 contact cycles |
| class 2 | 200 contact cycles |
| class 3 | 50 contact cycles |

| D-Sub with Filter (ferrite) | |
|-------------------------------|---|
| Frequency range | 10 - 300 MHz |
| Impedance | 5 MHz - 15 Ω 25 MHz - 30 Ω 100 MHz - 50 Ω 300 MHz - 75 Ω |



| Frequency (MHz) | Inner contacts Impedance (ohms) | End contacts Impedance (ohms) |
|-----------------|---------------------------------|-------------------------------|
| 1 | ~4 | ~5 |
| 5 | ~8 | ~15 |
| 10 | ~10 | ~25 |
| 25 | ~15 | ~40 |
| 50 | ~20 | ~60 |
| 100 | ~30 | ~80 |
| 300 | ~50 | ~100 |