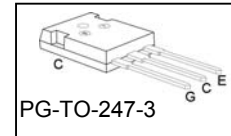
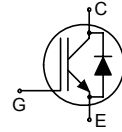


Reverse Conducting IGBT with monolithic body diode

Features:

- Powerful monolithic Body Diode with very low forward voltage
- Body diode clamps negative voltages
- TrenchStop® and Fieldstop technology for 1200 V applications offers :
 - very tight parameter distribution
 - high ruggedness, temperature stable behavior
- NPT technology offers easy parallel switching capability due to positive temperature coefficient in $V_{CE(sat)}$
- Low EMI
- Qualified according to JEDEC¹ for target applications
- Pb-free lead plating; RoHS compliant
- Complete product spectrum and PSpice Models : <http://www.infineon.com/igbt/>


Applications:

- Inductive Cooking
- Soft Switching Applications

| Type | V_{CE} | I_C | $V_{CE(sat), T_j=25^\circ C}$ | $T_{j,max}$ | Marking | Package |
|-------------|----------|-------|-------------------------------|-------------|----------|-------------|
| IHW30N120R2 | 1200V | 30A | 1.65V | 175°C | H30R1202 | PG-TO-247-3 |

Maximum Ratings

| Parameter | Symbol | Value | Unit |
|--|--------------|------------|------|
| Collector-emitter voltage | V_{CE} | 1200 | V |
| DC collector current | I_C | 60 | A |
| $T_C = 25^\circ C$ | | 30 | |
| $T_C = 100^\circ C$ | | | |
| Pulsed collector current, t_p limited by $T_{j,max}$ | $I_{C,puls}$ | 90 | |
| Turn off safe operating area ($V_{CE} \leq 1200V, T_j \leq 175^\circ C$) | - | 90 | |
| Diode forward current | I_F | 60 | |
| $T_C = 25^\circ C$ | | 30 | |
| $T_C = 100^\circ C$ | | | |
| Diode pulsed current, t_p limited by $T_{j,max}$ | $I_{F,puls}$ | 90 | |
| Diode surge non repetitive current, t_p limited by $T_{j,max}$ | I_{FSM} | 50 | |
| $T_C = 25^\circ C, t_p = 10ms$, sine halfwave | | 130 | |
| $T_C = 25^\circ C, t_p \leq 2.5\mu s$, sine halfwave | | 120 | |
| Gate-emitter voltage | V_{GE} | ± 20 | V |
| Transient Gate-emitter voltage ($t_p < 5ms$) | | ± 25 | |
| Power dissipation $T_C = 25^\circ C$ | P_{tot} | 390 | W |
| Operating junction temperature | T_j | -40...+175 | °C |
| Storage temperature | T_{stg} | -55...+175 | |
| Soldering temperature, 1.6mm (0.063 in.) from case for 10s | - | 260 | |

¹ J-STD-020 and JESD-022

Thermal Resistance

| Parameter | Symbol | Conditions | Max. Value | Unit |
|---|-------------|------------|------------|------|
| Characteristic | | | | |
| IGBT thermal resistance, junction – case | R_{thJC} | | 0.38 | K/W |
| Diode thermal resistance, junction – case | R_{thJCD} | | 0.37 | |
| Thermal resistance, junction – ambient | R_{thJA} | | 40 | |

Electrical Characteristic, at $T_j = 25\text{ }^\circ\text{C}$, unless otherwise specified

| Parameter | Symbol | Conditions | Value | | | Unit |
|--------------------------------------|---------------|---|-------|------|-----------|---------------|
| | | | min. | Typ. | max. | |
| Static Characteristic | | | | | | |
| Collector-emitter breakdown voltage | $V_{(BR)CES}$ | $V_{GE}=0V, I_C=1mA$ | 1200 | - | - | V |
| Collector-emitter saturation voltage | $V_{CE(sat)}$ | $V_{GE} = 15V, I_C=30A$ $T_j=25\text{ }^\circ\text{C}$ $T_j=125\text{ }^\circ\text{C}$ $T_j=175\text{ }^\circ\text{C}$ | - | 1.65 | 1.8 | |
| Diode forward voltage | V_F | $V_{GE}=0V, I_F=30A$ $T_j=25\text{ }^\circ\text{C}$ $T_j=125\text{ }^\circ\text{C}$ $T_j=175\text{ }^\circ\text{C}$ | - | 1.55 | 1.8 | |
| Gate-emitter threshold voltage | $V_{GE(th)}$ | $I_C=0.7mA, V_{CE}=V_{GE}$ | 5.1 | 5.8 | 6.4 | |
| Zero gate voltage collector current | I_{CES} | $V_{CE}=1200V, V_{GE}=0V$ $T_j=25\text{ }^\circ\text{C}$ $T_j=175\text{ }^\circ\text{C}$ | - | - | 5 2500 | μA |
| Gate-emitter leakage current | I_{GES} | $V_{CE}=0V, V_{GE}=20V$ | - | - | 100 | nA |
| Transconductance | g_{fs} | $V_{CE}=20V, I_C=30A$ | - | 19.7 | - | S |
| Integrated gate resistor | R_{Gint} | | | none | | Ω |

Dynamic Characteristic

| | | | | | | |
|---|------------|--|---|------|---|----|
| Input capacitance | C_{iss} | $V_{CE}=25V,$ | - | 2589 | - | pF |
| Output capacitance | C_{oss} | $V_{GE}=0V,$ | - | 77 | - | |
| Reverse transfer capacitance | C_{riss} | $f=1MHz$ | - | 62 | - | |
| Gate charge | Q_{Gate} | $V_{CC}=960V, I_C=30A$ $V_{GE}=15V$ | - | 198 | - | nC |
| Internal emitter inductance measured 5mm (0.197 in.) from case | L_E | | - | 13 | - | nH |

Switching Characteristic, Inductive Load, at $T_j=25^\circ C$

| Parameter | Symbol | Conditions | Value | | | Unit |
|----------------------------|--------------|--|-------|------|------|------|
| | | | min. | typ. | Max. | |
| IGBT Characteristic | | | | | | |
| Turn-off delay time | $t_{d(off)}$ | $T_j=25^\circ C,$ | - | 792 | - | ns |
| Fall time | t_f | $V_{CC}=600V, I_C=30A,$ $V_{GE}=0 / 15V,$ | - | 33 | - | |
| Turn-on energy | E_{on} | $R_G=28\Omega,$ | - | - | - | mJ |
| Turn-off energy | E_{off} | $L_\sigma^{2)}=180nH,$ | - | 2.4 | - | |
| Total switching energy | E_{ts} | $C_\sigma^{2)}=39pF$ | - | 2.4 | - | |

Switching Characteristic, Inductive Load, at $T_j=175^\circ C$

| Parameter | Symbol | Conditions | Value | | | Unit |
|----------------------------|--------------|--|-------|------|------|------|
| | | | min. | Typ. | Max. | |
| IGBT Characteristic | | | | | | |
| Turn-off delay time | $t_{d(off)}$ | $T_j=175^\circ C$ | - | 860 | - | ns |
| Fall time | t_f | $V_{CC}=600V, I_C=30A,$ $V_{GE}=0 / 15V,$ | - | 40 | - | |
| Turn-on energy | E_{on} | $R_G=28\Omega,$ | - | - | - | mJ |
| Turn-off energy | E_{off} | $L_\sigma=180nH^{2)},$ | - | 3.1 | - | |
| Total switching energy | E_{ts} | $C_\sigma=39pF^{2)}$ | - | 3.1 | - | |

²⁾ Leakage inductance L_σ and Stray capacity C_σ due to dynamic test circuit in Figure E.

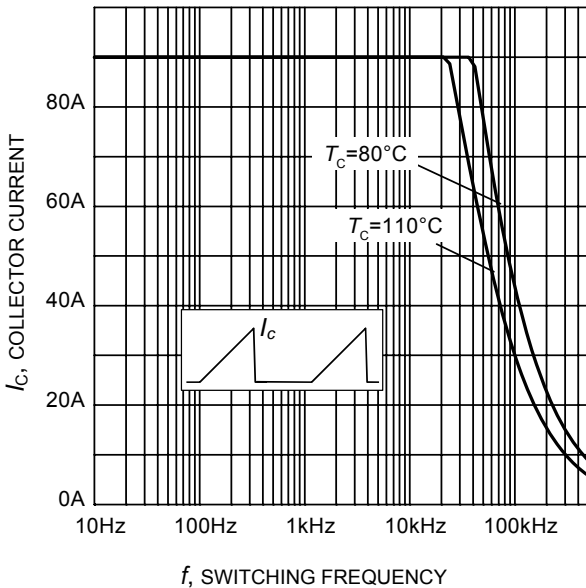


Figure 1. Collector current as a function of switching frequency for hard switching (turn-off)
 ($T_j \leq 175^\circ\text{C}$, $D = 0.5$, $V_{CE} = 600\text{V}$, $V_{GE} = 0/+15\text{V}$, $R_G = 28\Omega$)

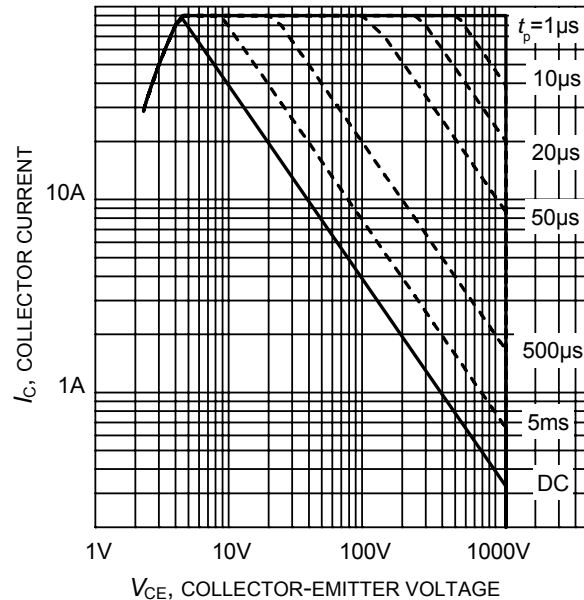


Figure 2. IGBT Safe operating area
 ($D = 0$, $T_C = 25^\circ\text{C}$, $T_j \leq 175^\circ\text{C}$; $V_{GE} = 15\text{V}$)

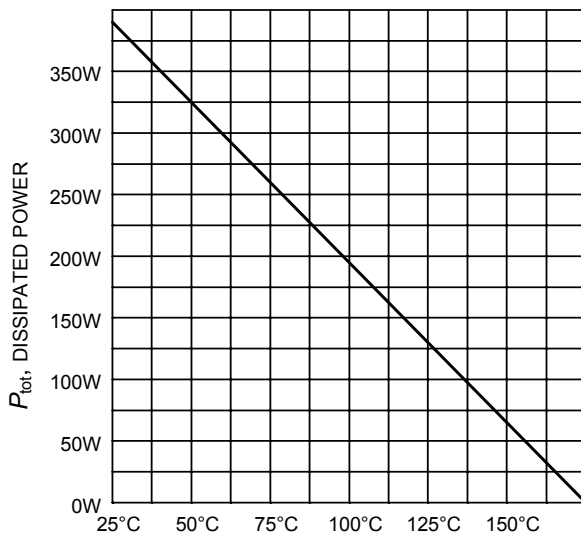


Figure 3. Power dissipation as a function of case temperature
 ($T_j \leq 175^\circ\text{C}$)

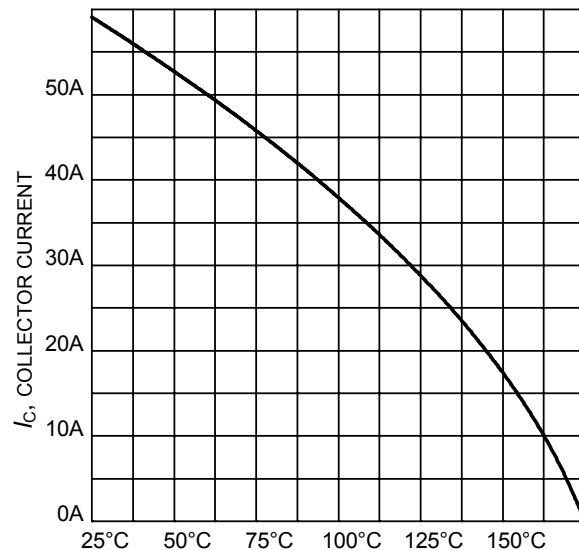


Figure 4. DC Collector current as a function of case temperature
 ($V_{GE} \geq 15\text{V}$, $T_j \leq 175^\circ\text{C}$)

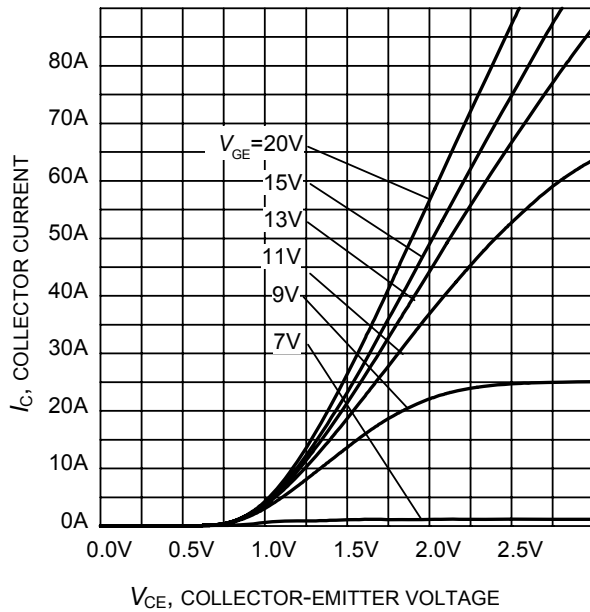


Figure 5. Typical output characteristic
($T_j = 25^\circ\text{C}$)

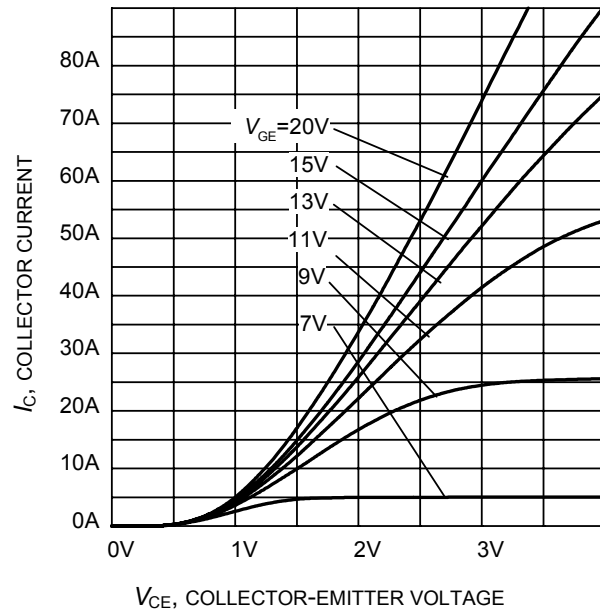


Figure 6. Typical output characteristic
($T_j = 175^\circ\text{C}$)

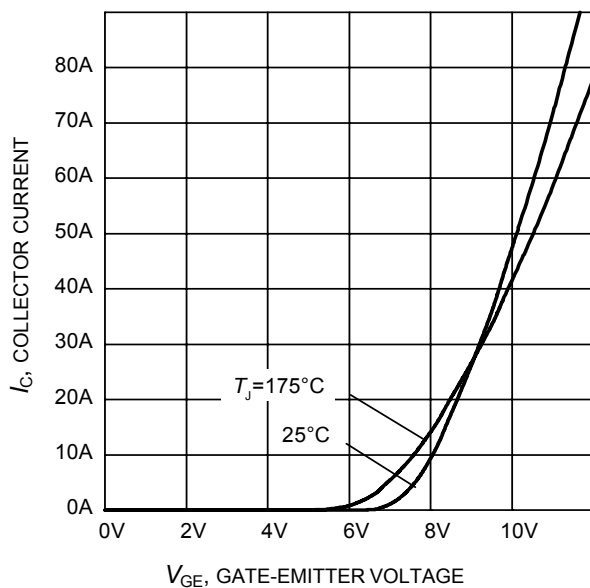


Figure 7. Typical transfer characteristic
($V_{CE} = 20\text{V}$)

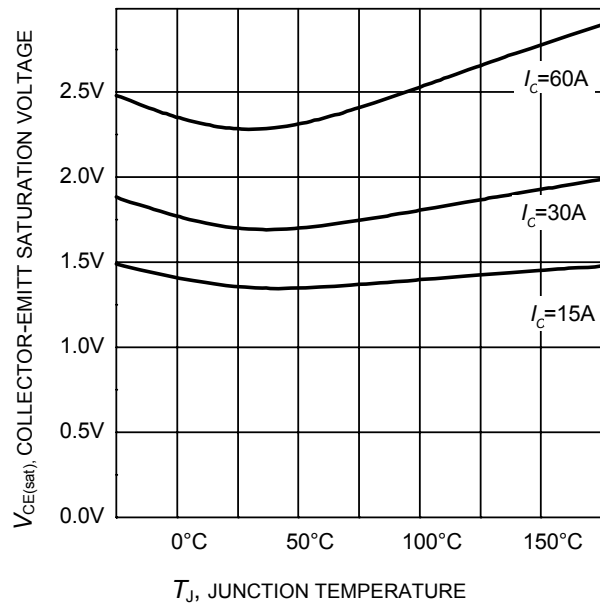


Figure 8. Typical collector-emitter saturation voltage as a function of junction temperature
($V_{GE} = 15\text{V}$)

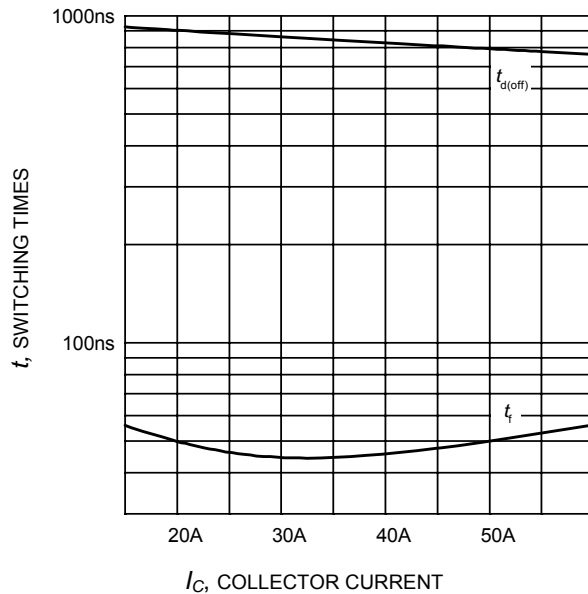


Figure 9. Typical switching times as a function of collector current
(inductive load, $T_J=175^\circ\text{C}$, $V_{CE}=600\text{V}$, $V_{GE}=0/15\text{V}$, $R_G=28\Omega$, Dynamic test circuit in Figure E)

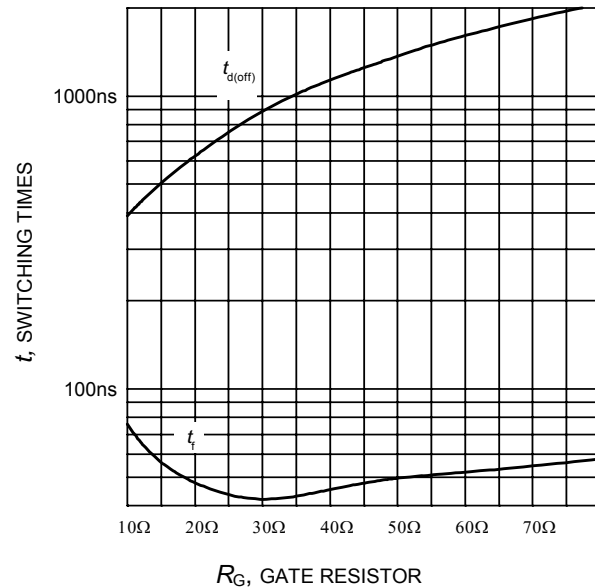


Figure 10. Typical switching times as a function of gate resistor
(inductive load, $T_J=175^\circ\text{C}$, $V_{CE}=600\text{V}$, $V_{GE}=0/15\text{V}$, $I_C=30\text{A}$, Dynamic test circuit in Figure E)

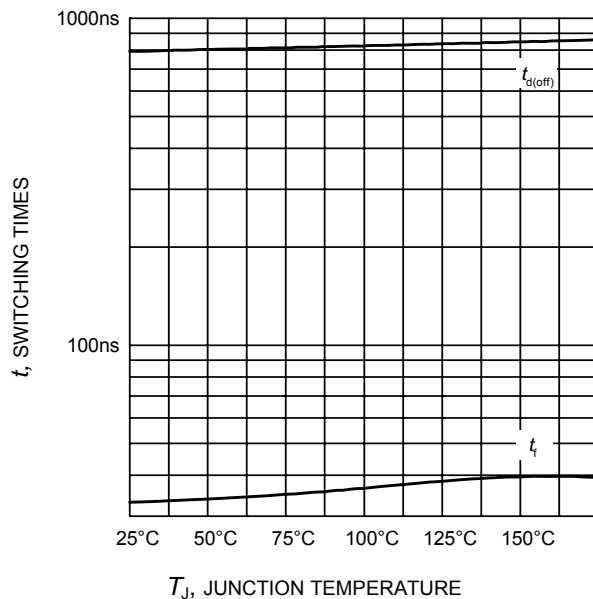


Figure 11. Typical switching times as a function of junction temperature
(inductive load, $V_{CE}=600\text{V}$, $V_{GE}=0/15\text{V}$, $I_C=30\text{A}$, $R_G=28\Omega$, Dynamic test circuit in Figure E)

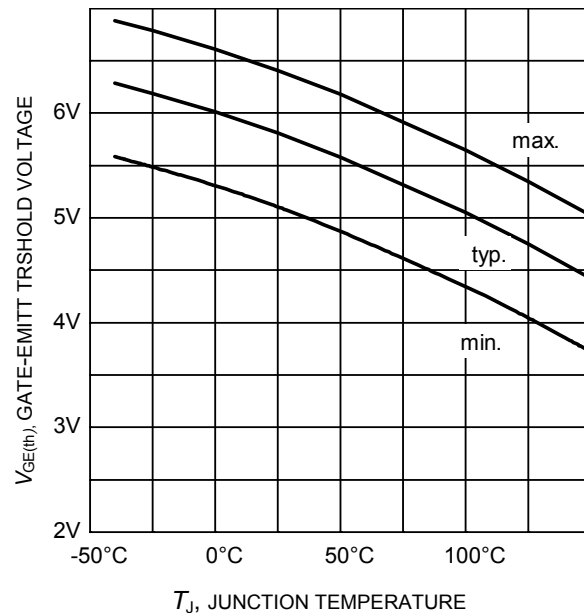


Figure 12. Gate-emitter threshold voltage as a function of junction temperature
($I_C = 0.7\text{mA}$)

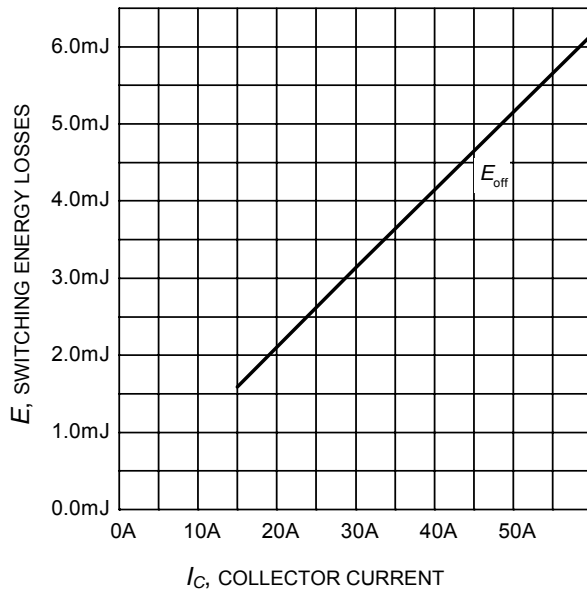


Figure 13. Typical turn-off energy as a function of collector current
 (inductive load, $T_J=175^\circ\text{C}$, $V_{CE}=600\text{V}$, $V_{GE}=0/15\text{V}$, $R_G=28\Omega$, Dynamic test circuit in Figure E)

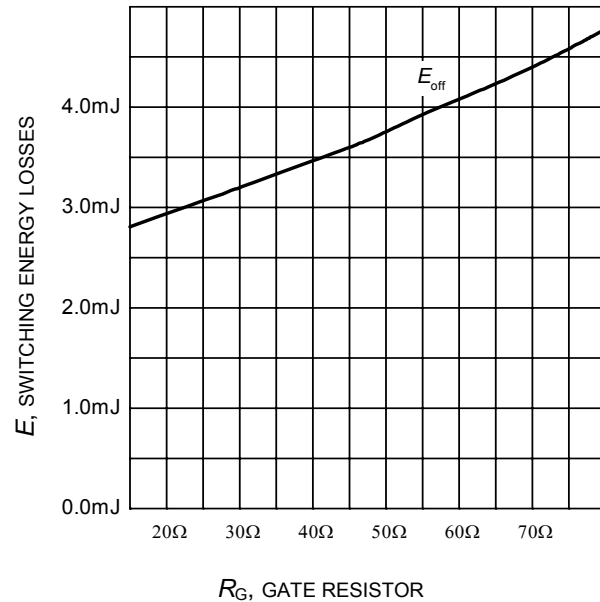


Figure 14. Typical turn-off energy as a function of gate resistor
 (inductive load, $T_J=175^\circ\text{C}$, $V_{CE}=600\text{V}$, $V_{GE}=0/15\text{V}$, $I_C=30\text{A}$, Dynamic test circuit in Figure E)

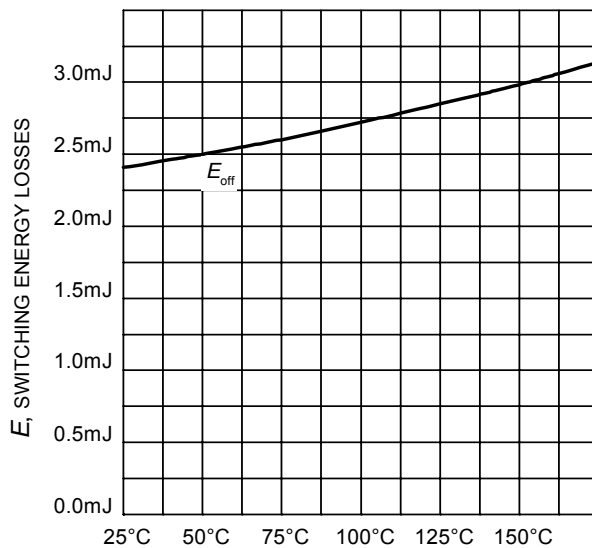


Figure 15. Typical turn-off energy as a function of junction temperature
 (inductive load, $V_{CE}=600\text{V}$, $V_{GE}=0/15\text{V}$, $I_C=30\text{A}$, $R_G=28\Omega$, Dynamic test circuit in Figure E)

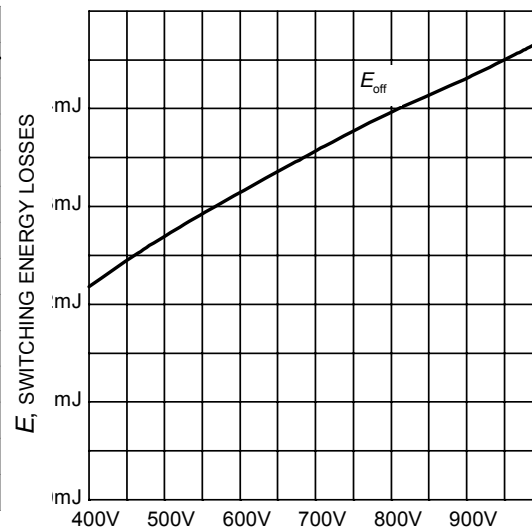


Figure 16. Typical turn-off energy as a function of collector emitter voltage
 (inductive load, $T_J=175^\circ\text{C}$, $V_{GE}=0/15\text{V}$, $I_C=30\text{A}$, $R_G=28\Omega$, Dynamic test circuit in Figure E)

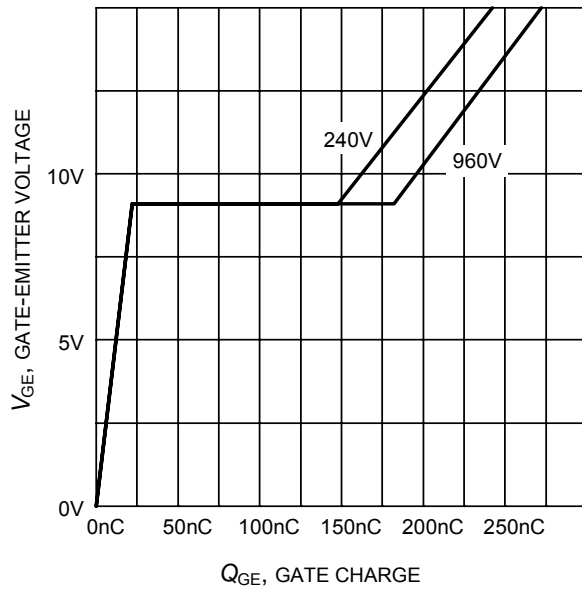


Figure 17. Typical gate charge
($I_C=30\text{ A}$)

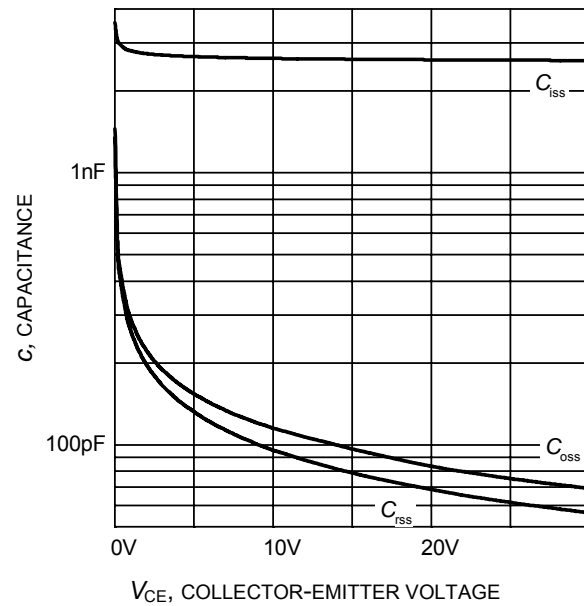


Figure 18. Typical capacitance as a function of collector-emitter voltage
($V_{GE}=0\text{V}$, $f = 1\text{ MHz}$)

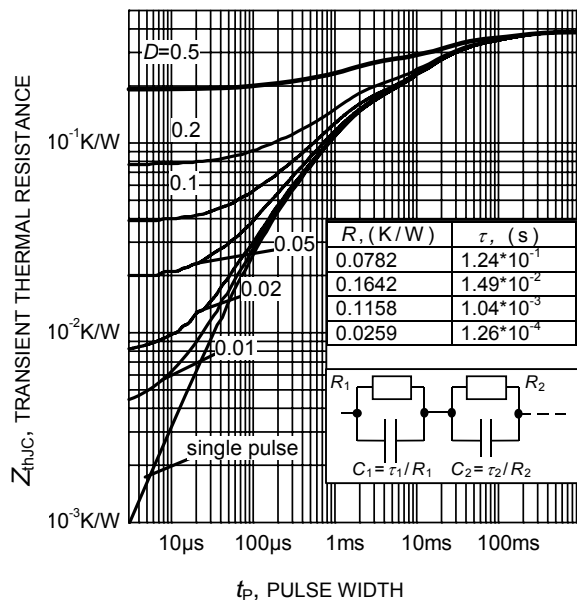


Figure 19. IGBT transient thermal resistance
($D = t_p / T$)

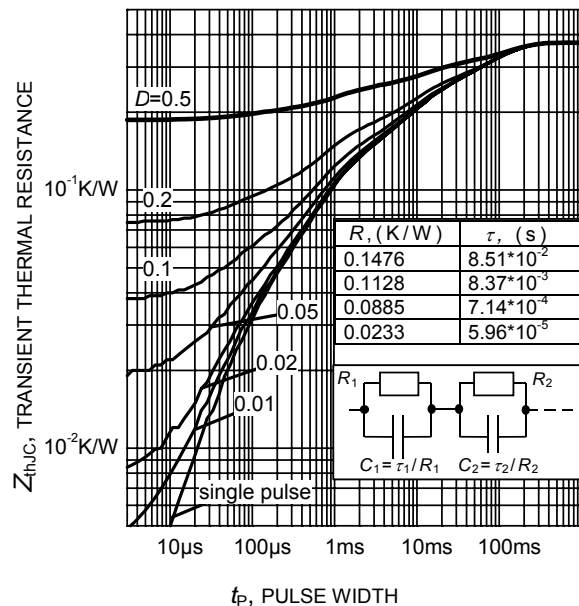


Figure 20. Diode transient thermal impedance as a function of pulse width
($D = t_p / T$)

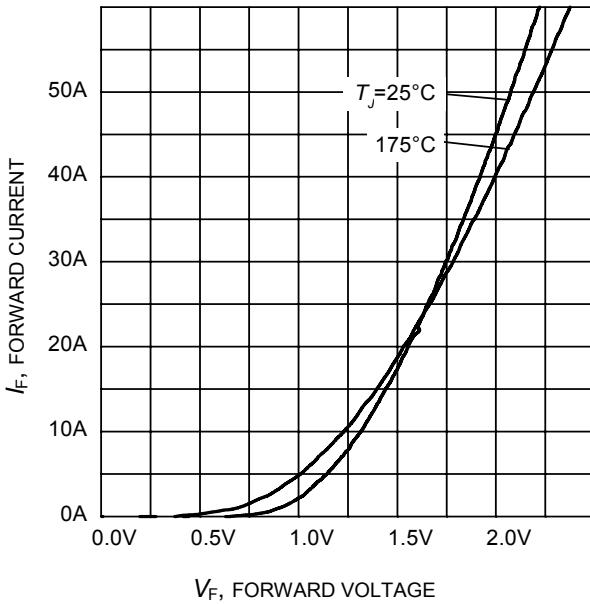


Figure 21. Typical diode forward current as a function of forward voltage

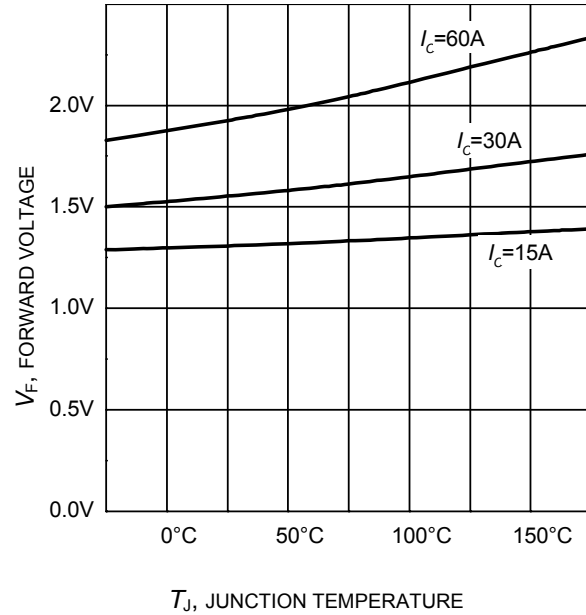
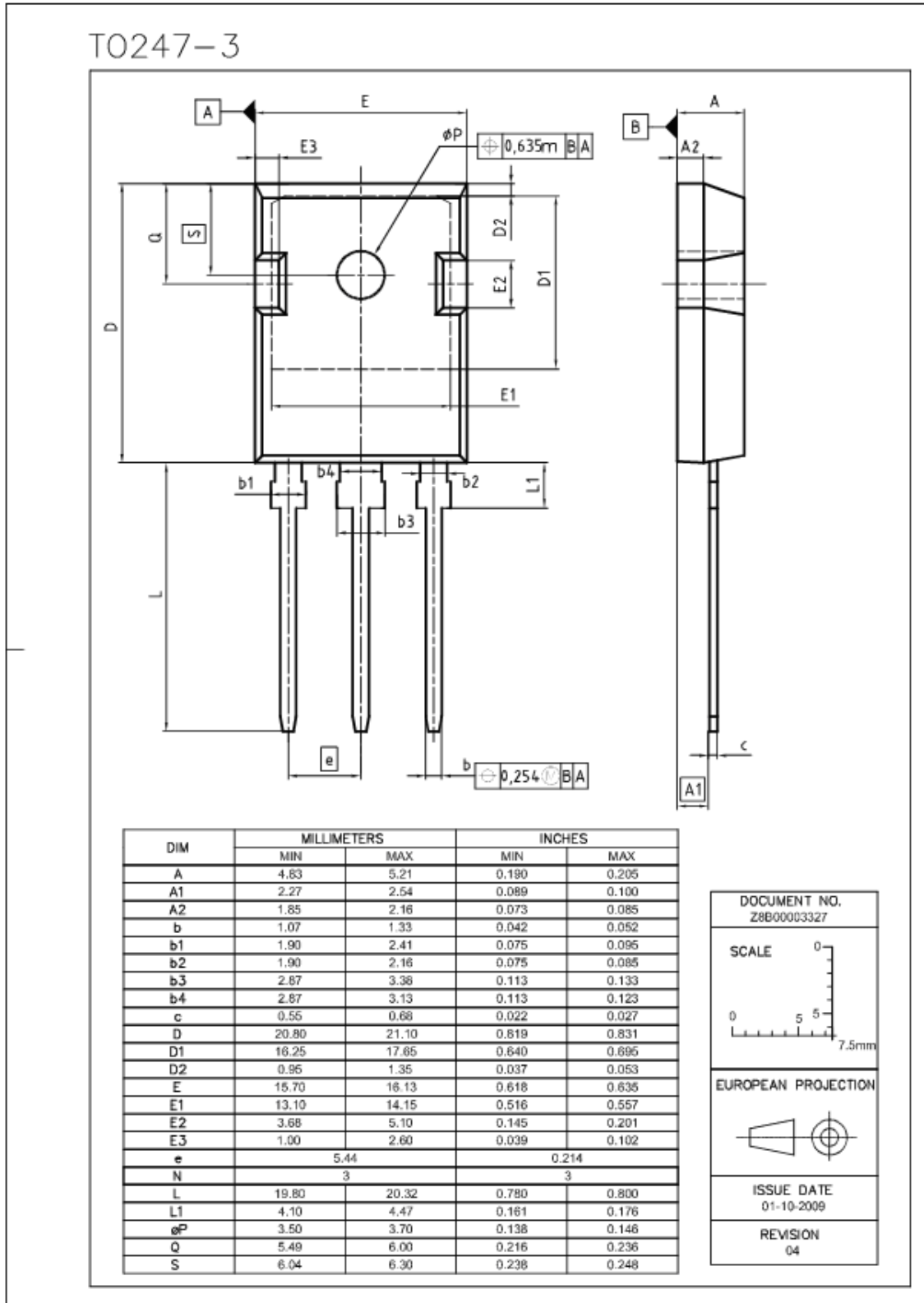


Figure 22. Typical diode forward voltage as a function of junction temperature



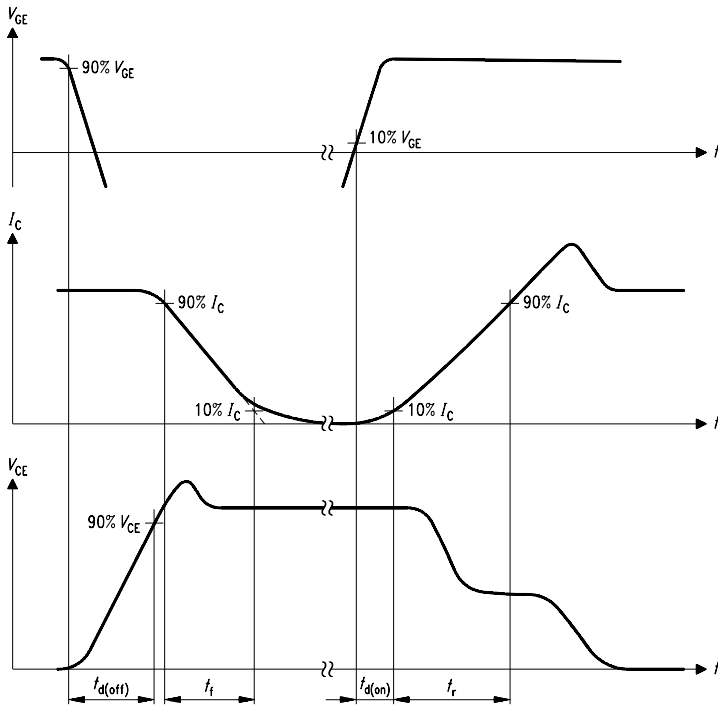


Figure A. Definition of switching times

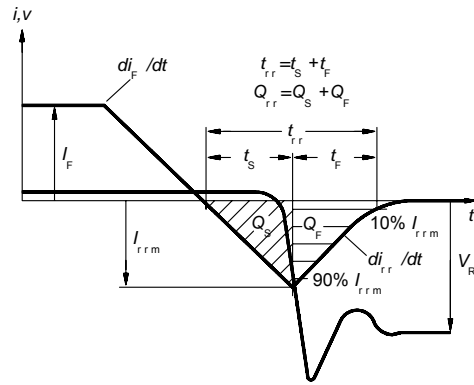


Figure C. Definition of diodes switching characteristics

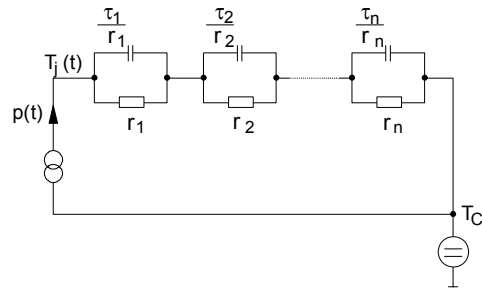


Figure D. Thermal equivalent circuit

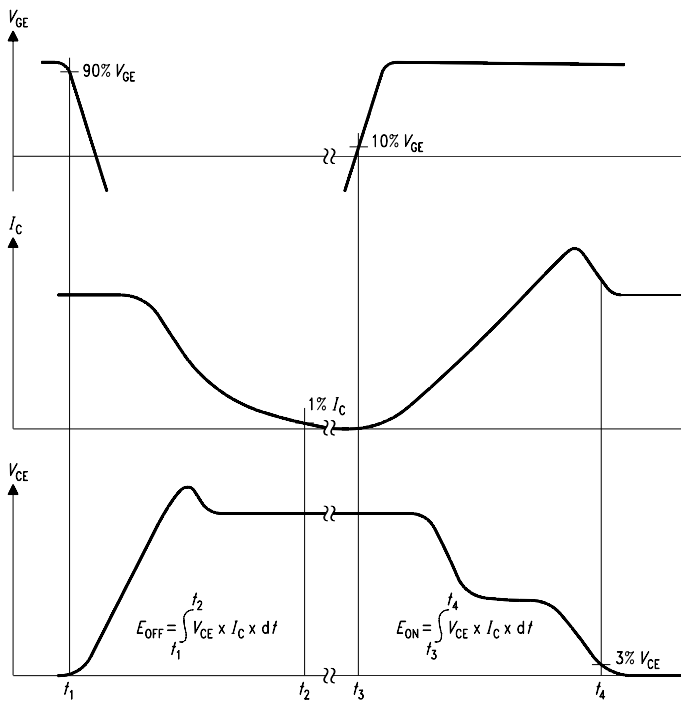


Figure B. Definition of switching losses

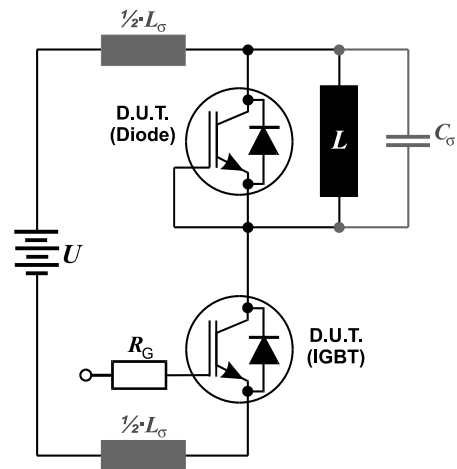


Figure E. Dynamic test circuit
Leakage inductance L_σ and Stray capacity C_σ

Edition 2006-01

**Published by
Infineon Technologies AG
81726 München, Germany**

**© Infineon Technologies AG 12/2/09.
All Rights Reserved.**

Attention please!

The information given in this data sheet shall in no event be regarded as a guarantee of conditions or characteristics ("Beschaffheitsgarantie"). With respect to any examples or hints given herein, any typical values stated herein and/or any information regarding the application of the device, Infineon Technologies hereby disclaims any and all warranties and liabilities of any kind, including without limitation warranties of non-infringement of intellectual property rights of any third party.

Information

For further information on technology, delivery terms and conditions and prices please contact your nearest Infineon Technologies Office (www.infineon.com).

Warnings

Due to technical requirements components may contain dangerous substances. For information on the types in question please contact your nearest Infineon Technologies Office.

Infineon Technologies Components may only be used in life-support devices or systems with the express written approval of Infineon Technologies, if a failure of such components can reasonably be expected to cause the failure of that life-support device or system, or to affect the safety or effectiveness of that device or system. Life support devices or systems are intended to be implanted in the human body, or to support and/or maintain and sustain and/or protect human life. If they fail, it is reasonable to assume that the health of the user or other persons may be endangered.