

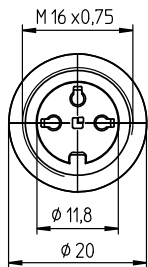
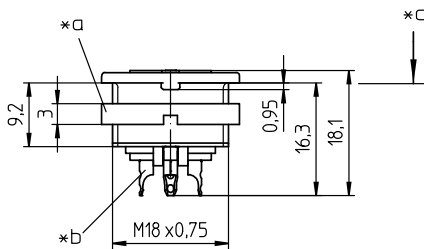
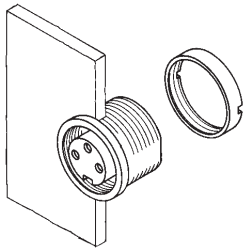
03 KFV

Circular connectors with threaded joint M16 acc. to IEC 61076-2-106, IP40/IP67/IP68

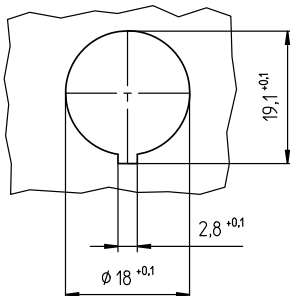


Chassis socket acc. to IEC 61076-2-106, IP40, with threaded joint and solder terminals, for front mounting

03 KFV



\*d



**Environmental conditions**

Temperature range -40 °C/+85 °C

**Materials**

Insulating body PA GF, V-0 according to UL94  
 Contact bush CuZn, silver-plated and flash gold-plated (3-8 poles)  
 CuZn, pre-nickel and gold-plated (12 poles)  
 Housing Zn diecast, pre-copper and nickel-plated  
 Ring screw CuZn, nickel-plated

**Mechanical data**

Insertion force/contact  $\leq 5.0 \text{ N}^1$   
 Withdrawal force/contact  $\geq 1.2 \text{ N}$  (3-8 poles)  
 $\geq 0.9 \text{ N}$  (12 poles)<sup>1</sup>  
 Tightening torque connector 1-3 Nm  
 Tightening torque nut 1-3 Nm  
 Protection class IP40<sup>2</sup>

<sup>1</sup> measured with a polished steel pin, nominal thickness 1.5 mm (1.0 mm with 12 poles)

<sup>2</sup> according to IEC DIN EN 60529, only in locked condition with an appropriate counterpart

**Connectable conductors for solder area**

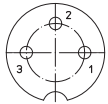
Section  $\leq 0.75 \text{ mm}^2$  (AWG 20)  
 (3-8 poles)  
 $\leq 0.25 \text{ mm}^2$  (AWG 24)  
 (12 poles)

**Electrical data (at  $T_{\text{amb}} 20 \text{ °C}$ )**

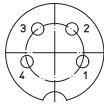
Contact resistance  $\leq 5 \text{ m}\Omega$   
 Rated current 5 A ( $T_{\text{amb}} 40 \text{ °C}$ , 3-8 poles)  
 3 A ( $T_{\text{amb}} 40 \text{ °C}$ , 12 poles)  
 Rated voltage with pollution degree 1:  
 300 V (versions 30, 40, 50/6, 60, 70)  
 100 V (versions 50, 71, 80, 81)  
 160 V (Polbild 120)  
 with pollution degree 2:  
 250 V (versions 30, 40)  
 32 V (versions 50, 71, 80, 81)  
 160 V (versions 50/6, 60, 70, 120)  
 Rated impulse voltage 1500 V (versions 30, 40, 50/6, 60, 70, 120)  
 500 V (versions 50, 71, 80, 81)  
 Material group II (IEC)/I (UL) ( $400 \leq \text{CTI} < 600$ )  
 Overvoltage category I  
 Insulation resistance  $> 100 \text{ M}\Omega$

**03** **KFV**

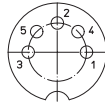
**Pin configurations, solder side view**



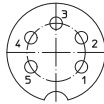
**03-a**  
**KFV 30**



**04-a**  
**KFV 40**



**05-b**  
**KFV 50**



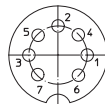
**05-a**  
**KFV 50/6**



**06-a**  
**KFV 60**



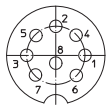
**07-a**  
**KFV 70**



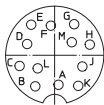
**07-b**  
**KFV 71**



**KFV 80**



**08-a**  
**KFV 81**





**12-a**  
**KFV 120**






- \*a nut enclosed separately
- \*b cup-shaped solder terminal
- \*c mounting direction
- \*d port in mounting plate

**Associated products**

**Counterparts**

 SV  SV ...-8  WSV

**Accessories**

 0381  038199  0382  
 0384  038799

03

KFV

Designation	Pole Number	PU (Pieces)	MDQ (Pieces)
KFV 30	3	50	100
KFV 40	4	50	100
KFV 50	5	50	100
KFV 50/6	5	50	100
KFV 60	6	50	100
KFV 70	7	50	100
KFV 71	7	50	100
KFV 80	8	50	100
KFV 81	8	50	100
KFV 120	12	50	100

**Packaging:**

in a cardboard box