

Power Wirewound Resistors Ceramic case , Vertical



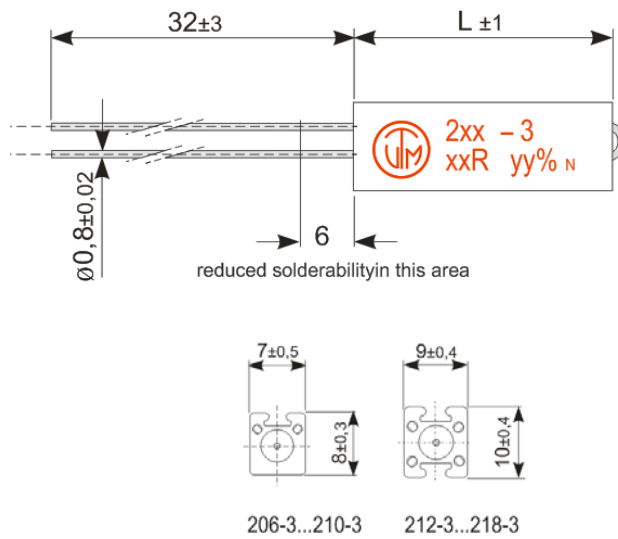
ELECTRICAL SPECIFICATIONS

Type		KV206-3	KV208-3	KV210-3	KV212-3	KV 214-3	KV216-3	KV218-3
<u>Nominal Power rating</u> P_{70}	[W]	4	5	7	7	9	11	17
<u>Resistance range</u>	Min	* Please check the table below						
	Max	9K1	15K	33K	15K	33K	47K	82K
<u>E-Series</u>		E24 (5[%]), E12 (10[%])						
<u>Tolerances</u>	± [%]	5, 10						
<u>Temperature coefficient</u>	$[10^{-6} \cdot K^{-1}]$	* Depends on the value, please check the table below						
<u>Temperature range</u>	[°C]	-55 ... +350						
<u>Thermal resistance</u>	$[KW^{-1}]$	70	56	40	40	31	25	16
<u>Dielectric withstanding voltage</u> IEC115-1 clause 4.7 (1[min])	[V]	2000						
<u>Insulation resistance</u> IEC115-1 clause 4.6	[MΩ]	$> 10^4$						
<u>Max. working voltage</u>	$[V]_{RMS}$	$\sqrt{P_{70} \cdot R}$						

PERFORMANCE DATA

<u>Derating linear</u>		70...350 (0W)
<u>Climatic category</u>		55/200/21
<u>Failure Rate</u> (Total, θ_o , max, 60[%] cont. lev.)	$[10^{-9} h^{-1}]$	appr. 100 depends on value
<u>Endurance</u> IEC115-1 clause 4.25 (P_{70} , @ 70[°C], 1000[h])	± [%]	3,0
<u>Damp heat, steady state</u> IEC115-1 clause 4.24 (40[°C], 93[% r.h.], 56[d])	± [%]	2,0
<u>Climatic sequence</u> IEC115-1 clause 4.23	± [%]	2,0
<u>Terminal strength</u>	± [%]	1,0
<u>Terminal Tensile Strength</u>	[N]	50
<u>Resistance to soldering heat</u> IEC115-1 clause 4.12 (260 ^{±5} [°C], 3,5 ^{±1} [s])	± [%]	± 0,2
<u>Solderability</u> IEC 60068-2-20 (245 ^{±5} [°C], 3 ^{±0,5} [s])		Solder bath method
<u>Marking</u> IEC60062		Printed in clear

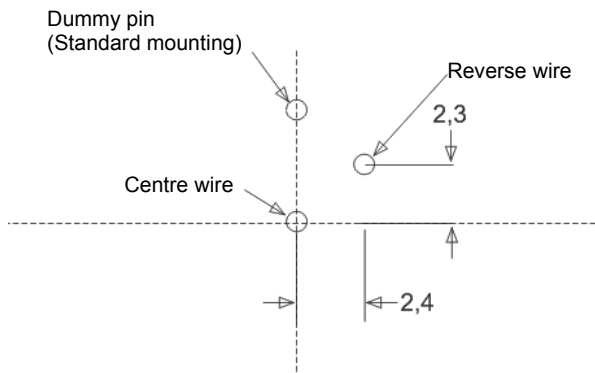
DIMENSIONS [mm]



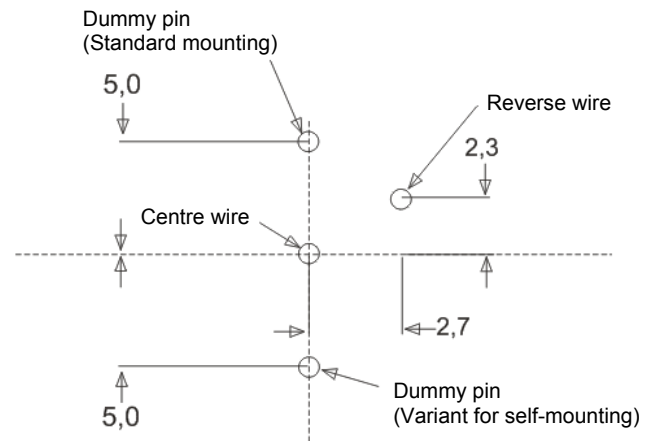
Type	L ₁
KV206-3	20 ±1,0
KV208-3	25 ±1,0
KV210-3	38 ±1,0
KV212-3	25 ±1,0
KV214-3	38 ±1,0
KV216-3	50 ±1,5
KV218-3	75 ±2,0

PCB – Layout for series KV

KV206...KV210-3



KV212...KV218-3



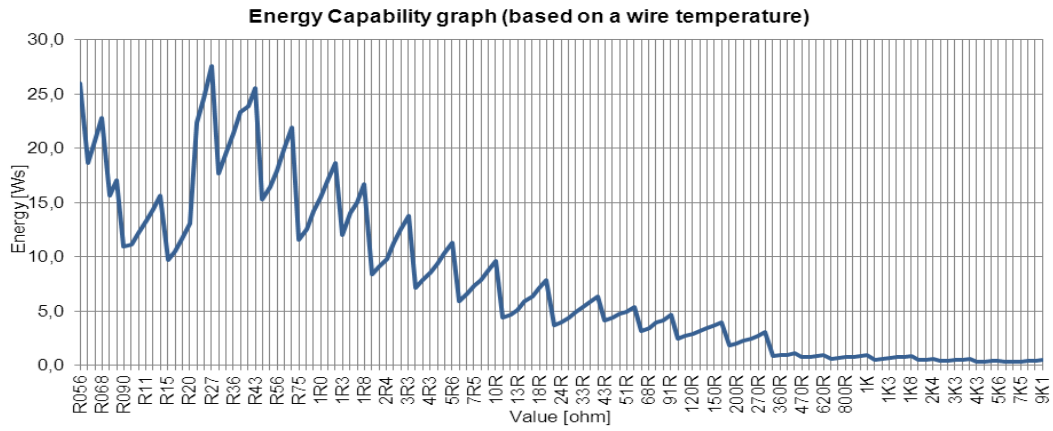
ELECTRICAL CHARACTERISTIC

Resistance range [minimum]		
Type	±10%	±5%
KV206-3	0R056	0R1
KV208-3	0R075	0R15
KV210-3	0R11	0R33
KV212-3	0R075	0R15
KV214-3	0R11	0R33
KV216-3	0R15	0R51
KV218-3	0R27	0R91

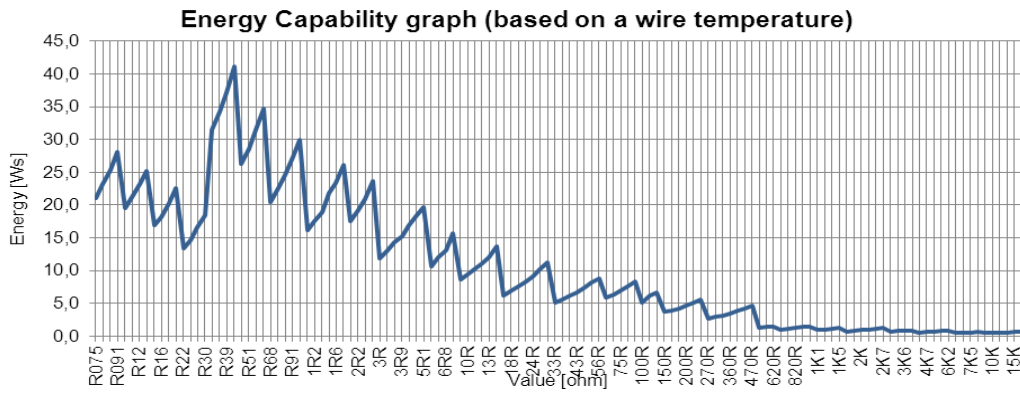
Temperature coefficient [ppm K ⁻¹]			
Type	TC +400 ±50	TC 0 ±40	TC 0 ±10
KV206-3	0R056...0R2	0R22...300R	330R...9K1
KV208-3	0R075...0R3	0R33...470R	510R...15K
KV210-3	0R11...0R68	0R75...910R	1K...33K
KV212-3	0R075...0R3	0R33...470R	510R...15K
KV214-3	0R11...0R68	0R75...910R	1K...33K
KV216-3	0R15...1R	1R1...1K3	1K5...47K
KV218-3	0R27...1R6	1R8...2K4	2K7...82K

ELECTRICAL PERFORMANCE

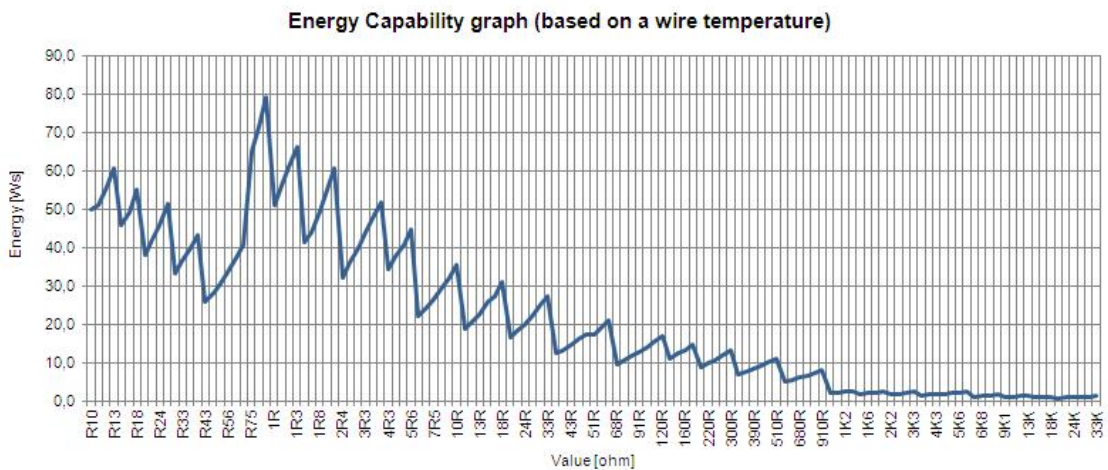
KV206-3



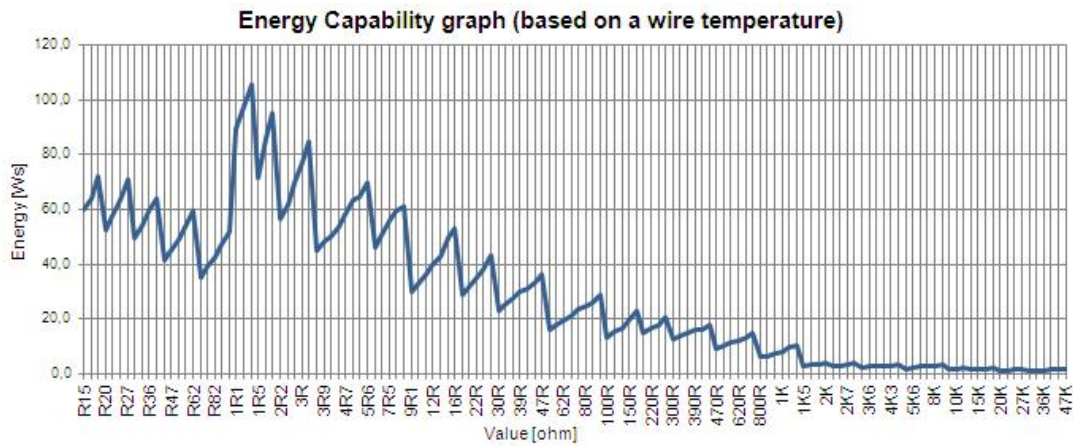
KV208-3 and KV212-3



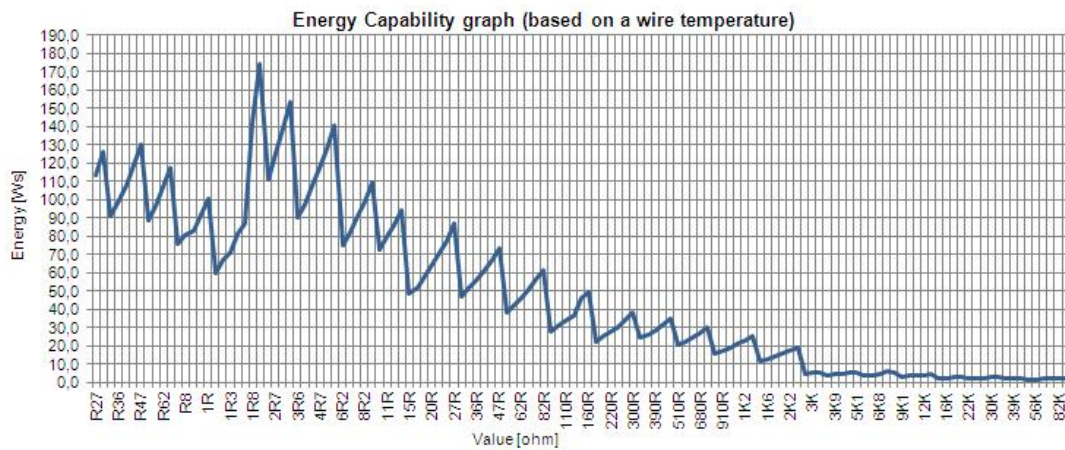
KV210-3 and KV214-3



KV216-3



KV218-3



PACKAGING

The standard packaging for KV in axial type is bulk, dimensions below.



Type	Packaging	Pieces	Pack. Code
KV206-3	Bulk	200	B
KV208-3		200	
KV210-3		200	
KV212-3		200	
KV214-3		200	
KV216-3		200	
KV218-3		100	

ORDERING EXAMPLE

KV206-3	10	B	100R
Type	Tolerance	Pack-Code	R-Value