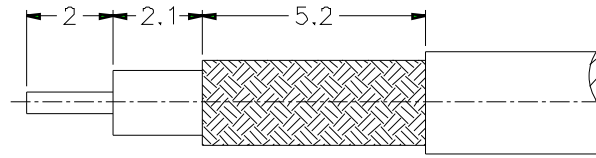
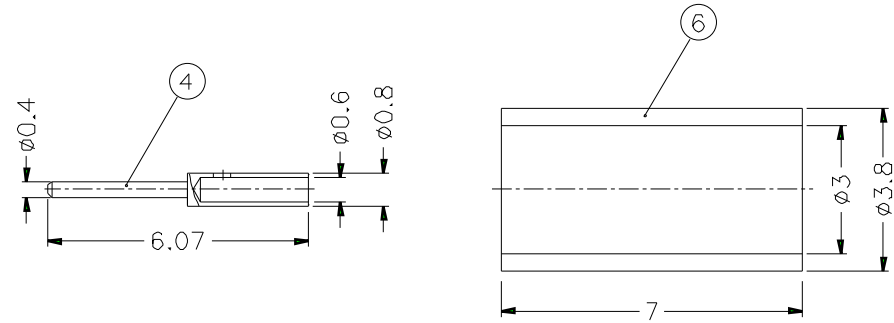
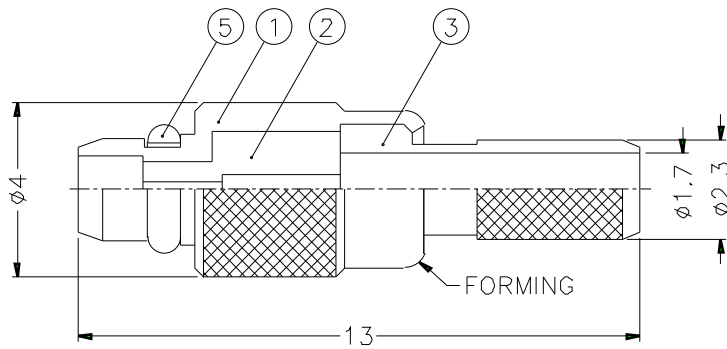


1		2		3		4		5		6		7		8	
REVISIONS															
ISS	ZONE	DESCRIPTION\PER REQUEST\DATE													



RECOMMENDED  
CABLE STRIPPING DIM'S



NOTES: FINISH (PLATING THICKNESS IN MICRO-INCHES)

1. BRASS PER QQ-B-626
2. GOLD PL. 3 MIN. THICK OVER NICKEL PL. 100 MIN. THICK OVER COPPER STRIKE
3. BERYLLIUM COPPER PER QQ-C-530
4. GOLD PL. 30 MIN. THICK OVER NICKEL PL. 100 MIN. THICK OVER COPPER STRIKE
5. TEFLON MIL-P-19468

1. CRIMPED FERRULE  
HEX CRIMP SIZE .128"

6	FERRULE	COPPER	NOTE 2	1	FR-38/3X7C	DIMENSIONS ARE IN MILLIMETERS UNLESS OTHERWISE SPECIFIED TOLERANCES 0.5-6 = $\pm 0.2$ 6-30 = $\pm 0.4$ 30-120 = $\pm 0.6$ 120-315 = $\pm 1$ 315-1000 = $\pm 1.6$ 1000-2000 = $\pm 2.4$				PART NO. MMCX1121A1-3GT30G-5-50		<h1>Amphenol</h1> <p>TITLE MMCX CRIMP PLUG (FOR RG-174/U,188A/U,316/U)</p> <p>DRAWING NO. KJ-MMCX1121A1-3GT30G-316U-50</p> <p>ITEM NO.</p>				
5	RETAINER RING	NOTE 3	NOTE 2	1	MMCX1121A1-5-C					APPROVED			DATE 10-11-01'			
4	CONTACT PIN	NOTE 1	NOTE 4	1	MMCX1121A1-4-08/06-B	CHECKED		DATE 10-11-01'								
3	BARREL	NOTE 1	NOTE 2	1	MMCX1121A1-3-23/17	DRAWN		DATE 10-11-01'								
2	INSULATOR	NOTE 5	NATURAL	1	MMCX1121A1-2T-5-B	NO.	DESCRIPTION	MATERIAL	FINISH	Q'TY	DRAWING NO.	SCALE	6/1	ISSUE	A	FILE NO.
1	BODY	NOTE 1	NOTE 2	1	MMCX1121A1-1-C	1	2	3	4	5	6	7	8			

1 2 3 4 5 6 7 8