

# Connettori maschio per C.S.

## Headers for P.C.B.

Connecteurs mâle pour C.I.

Stiftleiste für Leiterplatten

<b>Passo</b> Pas	<b>Pitch</b> Rastermaß	mm
<b>Tensione nominale</b> Tension nominale	<b>Rated Voltage</b> Bemessungsspannung	V
<b>Corrente nominale</b> Intensité nominale	<b>Rated Current</b> Bemessungsstrom	A

<b>Temperatura</b> Température	<b>Temperature</b> Temperatur	°C
<b>Corpo isolante</b> Corps isolant	<b>Housing</b> Isolierkörper	

	<b>IMQ</b>	EN61984
	<b>VDE</b>	EN61984
	<b>cUL</b>	UL1059 + C22.2 n°158

<b>Poli</b> Pôles	<b>Poles</b> Polzahl	X
<b>Colore standard</b> Coloris standard	<b>Standard colour</b> Standardfarbe	Y
<b>Altri dati</b> Autres données	<b>Other information</b> Weitere Informationen	Pag Seite

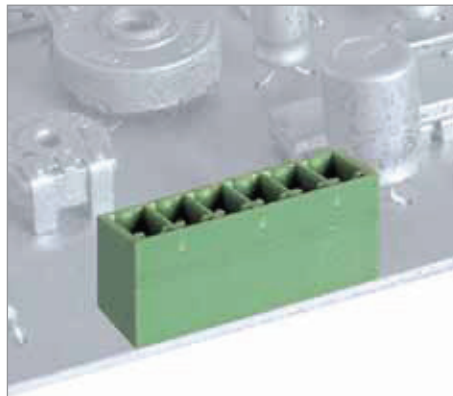
<b>Ordinazione</b> Référence de commande		<b>How to order</b> Bestellschlüssel			
<b>MRT9 P3,5 / X</b>		<b>SQ</b>	<b>Y</b>	<b>N...</b>	
<b>Tipo</b>	<b>Passo</b>	<b>Poli</b>	<b>Versione</b>	<b>Colori</b>	<b>Numerazione</b>
Type	Pitch	Poles	Version	Colors	Printing
Type	Pas	Pôles	Version	Couleurs	Marquage
Type	Rastermaß	Polzahl	Version	Farben	Bedruckung

<b>Altri colori a richiesta</b> Autres couleurs sur demande	<b>Other colours on demand</b> Andere Farben bei Bedarf

### MRT9 MRT9..SQ

Blocco unico Monobloc Single block Einzelblock

Poli Pôles Poles Polzahl 2/20

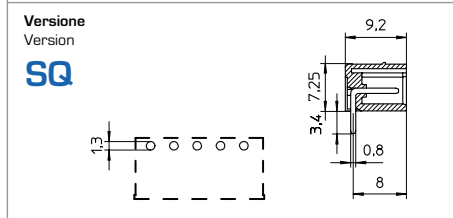
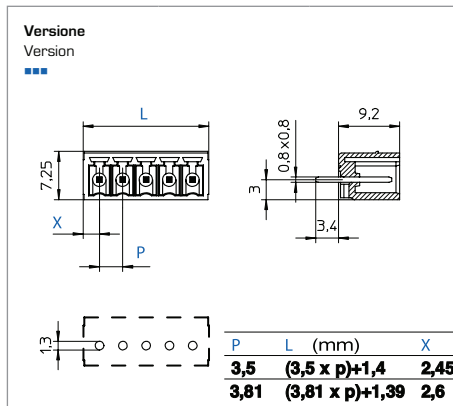


<b>3,5</b>	<b>3,81</b>
<b>200</b>	
<b>10</b>	

<b>110</b>
<b>PA - UL 94 VO</b>

<b>V</b>	<b>A</b>	<b>mm²/AWG</b>
<b>200</b>	<b>10</b>	<b>0,2 ÷ 1,0</b>
<b>300</b>	<b>8</b>	<b>30 ÷ 16</b>

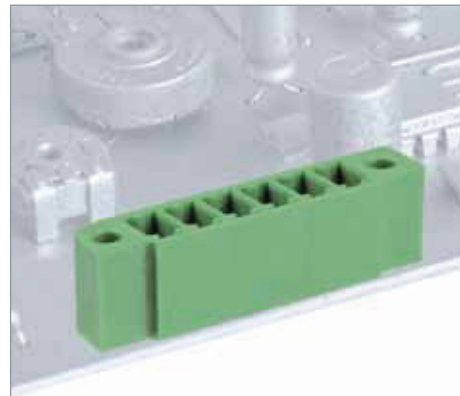
<b>min 2 - max 20</b>
<b>VE</b>
<b>D/B4</b>



### MRT9..FV MRT9..SQ FV

Blocco unico Monobloc Single block Einzelblock

Poli Pôles Poles Polzahl 2/20

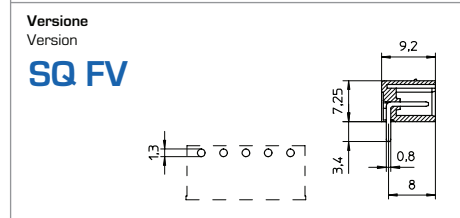
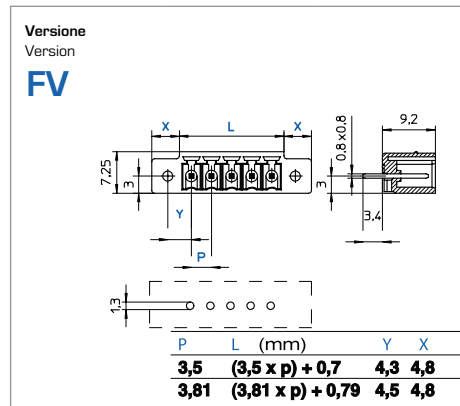


<b>3,5</b>	<b>3,81</b>
<b>200</b>	
<b>10</b>	

<b>110</b>
<b>PA - UL 94 VO</b>

<b>V</b>	<b>A</b>	<b>mm²/AWG</b>
<b>200</b>	<b>10</b>	<b>0,2 ÷ 1,0</b>
<b>300</b>	<b>8</b>	<b>30 ÷ 16</b>

<b>min 2 - max 20</b>
<b>VE</b>
<b>D/B4</b>



## MRT9

## MRT9..SQ

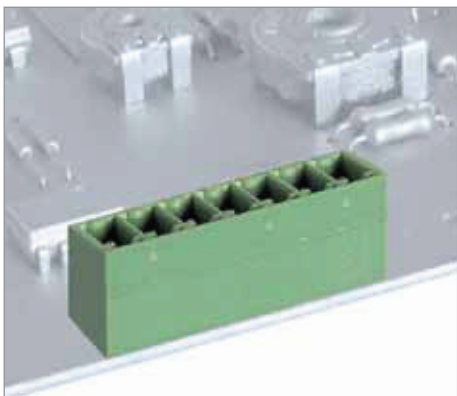
Blocco unico  
Monobloc

Single block  
Einzelblock

Poli  
Póles

Poles  
Polzahl

2/10



7 7,62

400 500

10

110

PA - UL 94 V0

V	A	mm <sup>2</sup> /AWG
400 (7)	500 (7,62)	10
300	8	30 ÷ 16

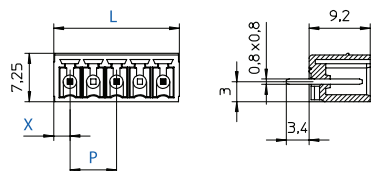
min 2 - max 10

VE

D/B4

Versione  
Version

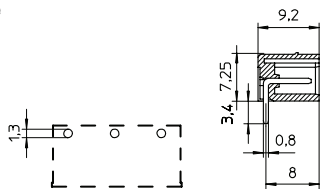
■ ■ ■



P	L (mm)	X
7	(7 x p)-2,1	2,45
7,62	(7,62 x p)-2,42	2,6

Versione  
Version

SQ



## MRT9..FV

## MRT9..SQ FV

Blocco unico  
Monobloc

Single block  
Einzelblock

Poli  
Póles

Poles  
Polzahl

2/10



7 7,62

400 500

10

110

PA - UL 94 V0

V	A	mm <sup>2</sup> /AWG
400 (7)	500 (7,62)	10
300	8	30 ÷ 16

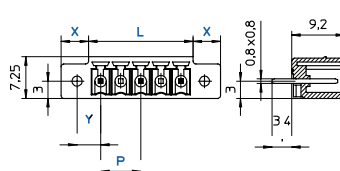
min 2 - max 10

VE

D/B4

Versione  
Version

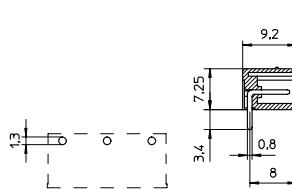
FV



P	L (mm)	Y	X
7	(7 x p)-2,8	4,3	4,8
7,62	(7,62 x p)-3,02	4,5	4,8

Versione  
Version

SQ FV



## MRT33

## MRT33..SQ

Blocco unico  
Monobloc

Single block  
Einzelblock

Poli  
Póles

Poles  
Polzahl

2/12



3,81

200

10

110

PA - UL 94 V0

V	A	mm <sup>2</sup> /AWG
300	8	30 ÷ 16

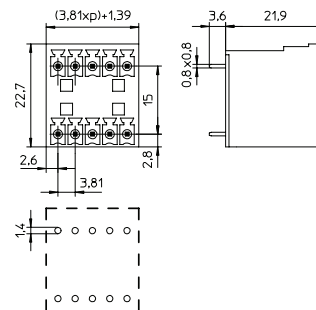
min 2 - max 12

VE

D/B4

Versione  
Version

■ ■ ■



Versione  
Version

SQ

