

**Features:**

- \* Available in 2 thru 24 circuit housing
- \* Voltage rating 600V (R.M.S.)
- \* Current rating 9 Amps per circuit

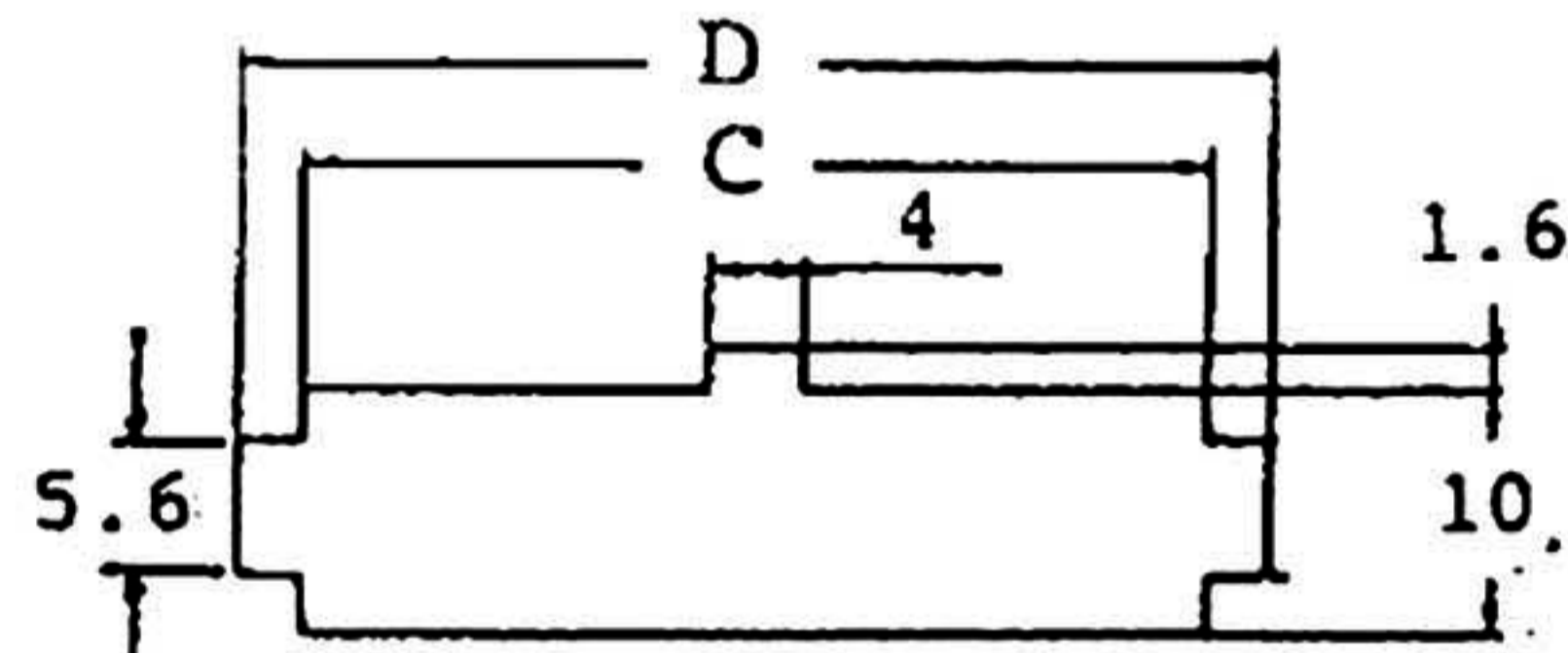
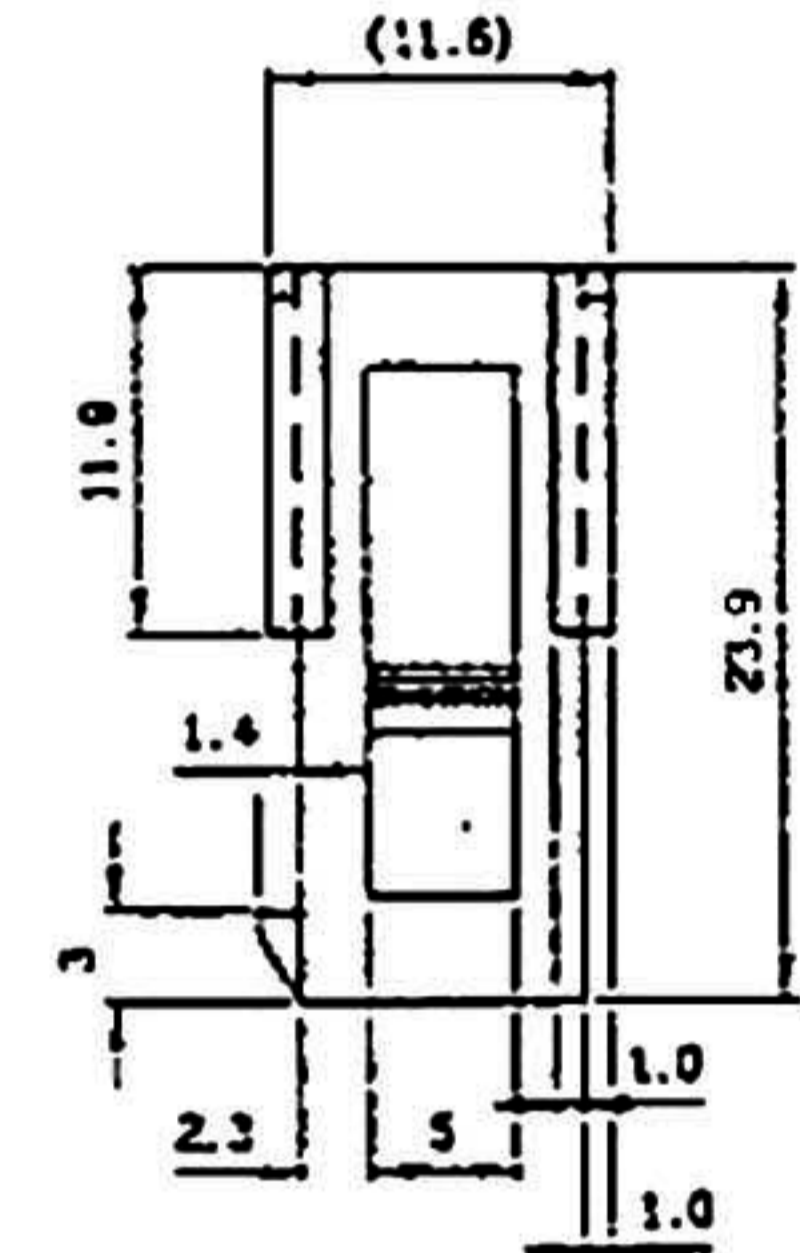
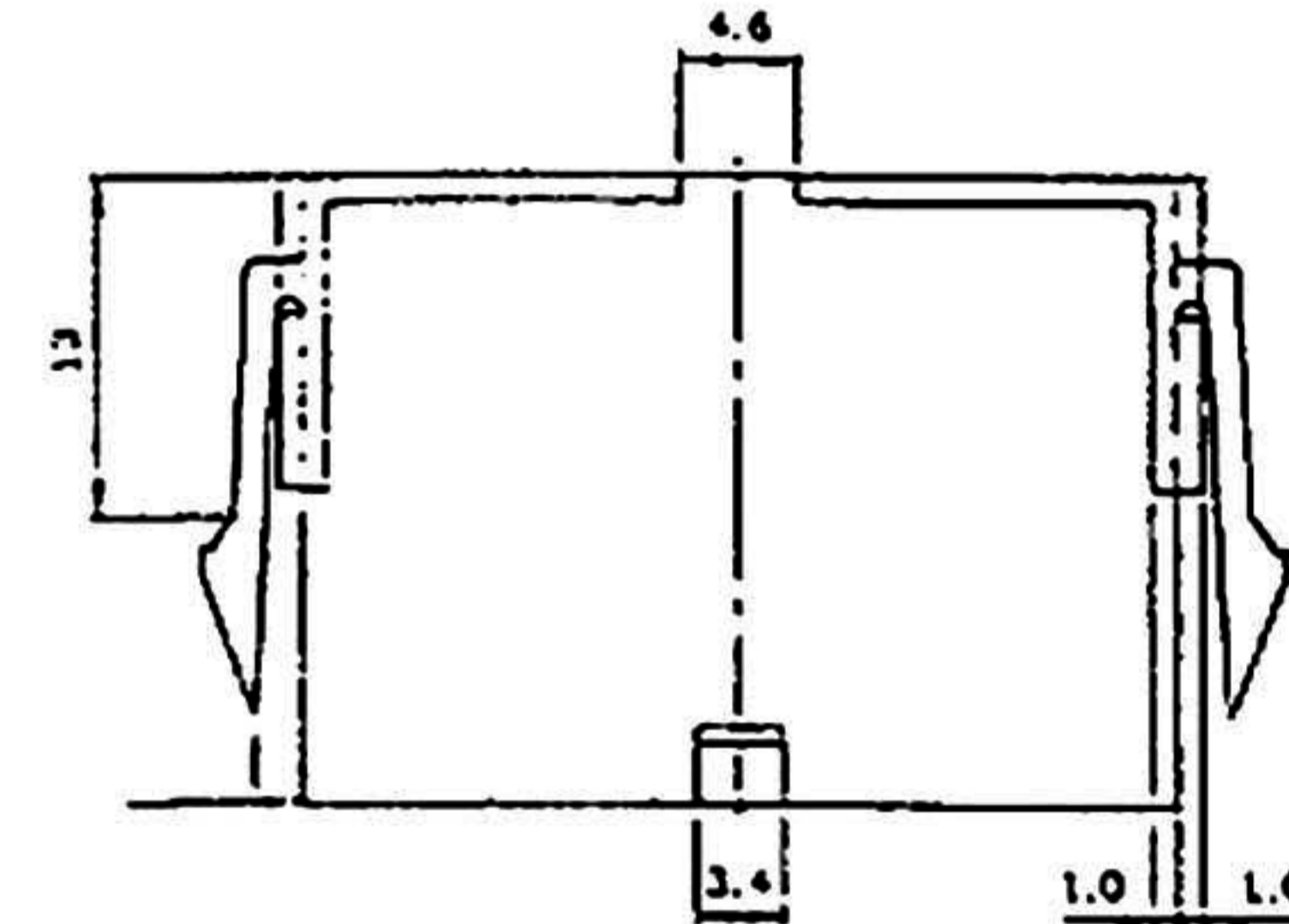
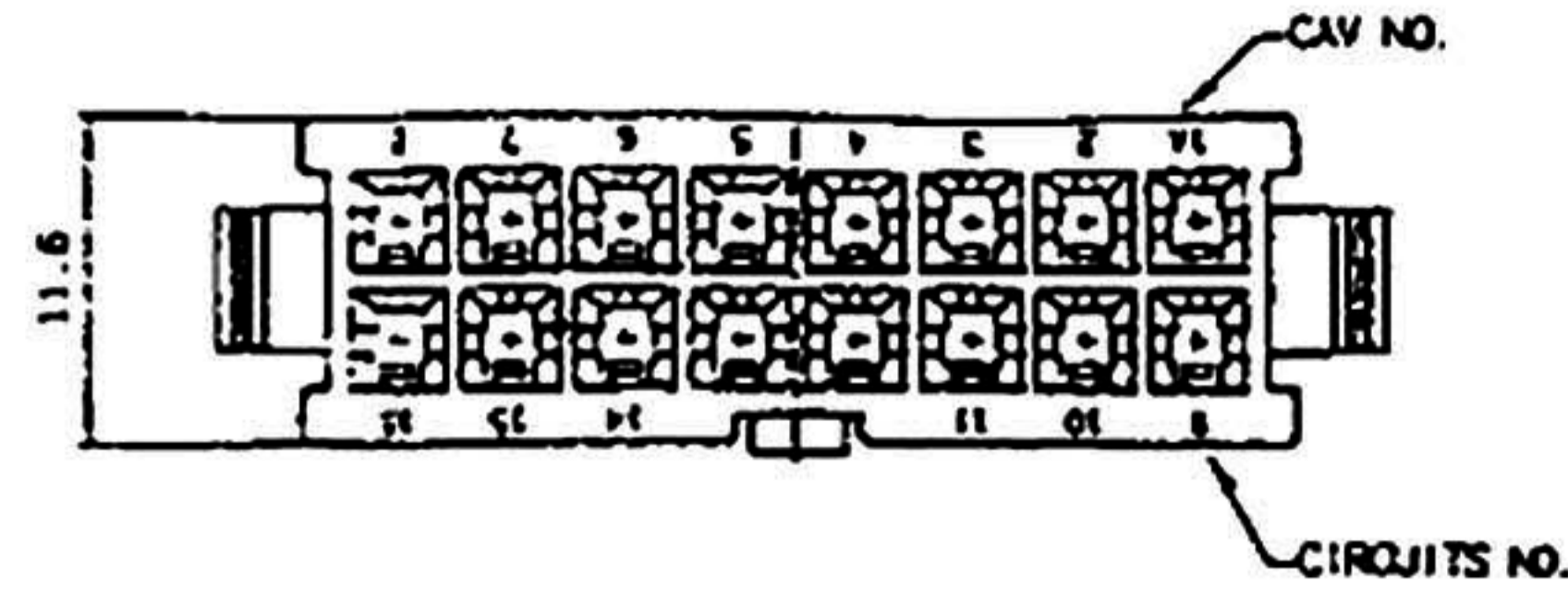
**Specification:**

**Material:**

- \* UL 94V-2 nylon 66

**Electrical:**

- \* Voltage rating: 600V AC/DC
- \* Current rating: 9A max
- \* Withstanding Voltage: 1500V AC for 60 seconds
- \* Insulation Resistance: 1000M ohms min
- \* Temperature Rise: 30°C max
- \* Storage Temperature Range: -40°C to 105°C

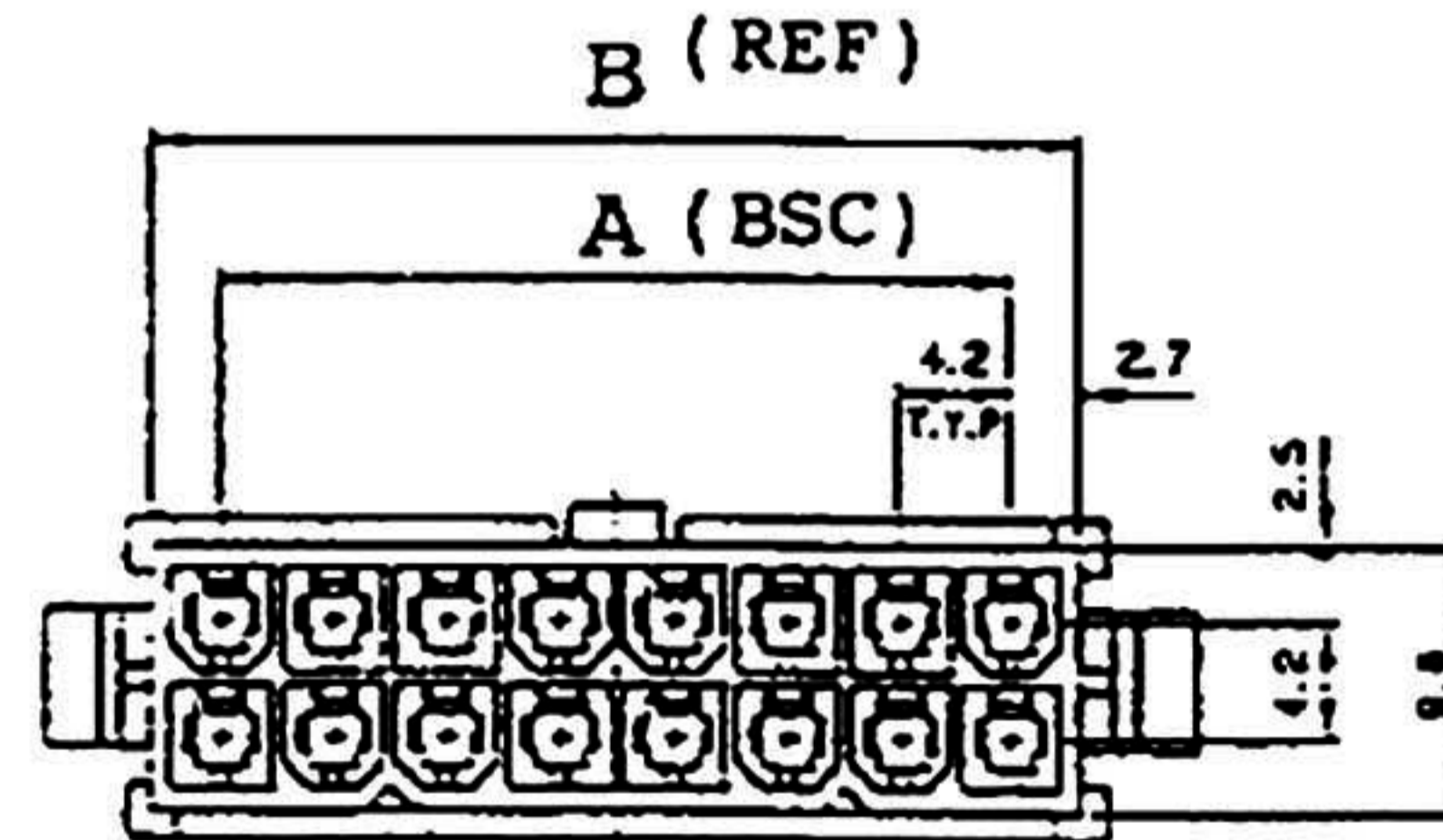


**Mounting Hole Details for 4259-NE Housing**

Max. Panel Thickness: 2.54mm

**Dimensional Information (mm)**

Circuits	Dim. A	Dim. B	Dim. C	Dim. D	Circuits	Dim. A	Dim. B	Dim. C	Dim. D	Circuits	Dim. A	Dim. B	Dim. C	Dim. D
2		5.4	5.8	10.8	10	16.8	22.2	22.0	27.6	18	33.0	39.0	39.1	41.1
4	4.2	9.8	10.0	15.0	12	21.0	26.4	26.8	31.8	20	37.8	43.2	43.6	46.5
6	6.4	13.8	14.2	19.2	14	25.2	30.8	31.0	35.0	22	42.0	47.4	47.8	52.8
8	12.6	18.0	18.4	23.4	16	29.4	34.8	35.2	40.2	24	48.2	54.0	54.0	57.3



**RoHS Compliant**

*Gold Star Connectors Co., Ltd.*

APPD. 核准	SCALE 比例 参考	TOLERANCE 容許公差
DWG. 製圖 Jolin	UNIT 單位 MM	0. ±
DATE 制表日 2006/06/02	PAGE 張數 1 OF 1	.0 ±
		.00 ±
		SIZE 紙張尺寸 A4
		REV. 版本 A

PART NAME 品名	FEMALE HOUSE 4,2mm WHITE RoHS
PART NO. 料號	NCHD420-xxM