

ROHS Compliant

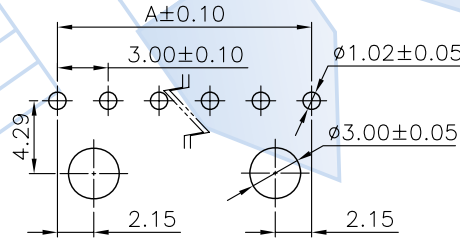
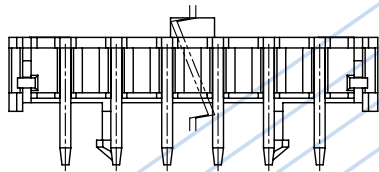
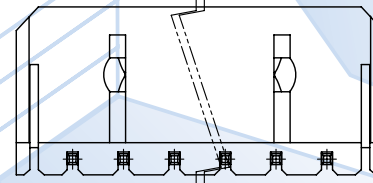
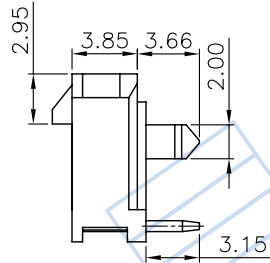
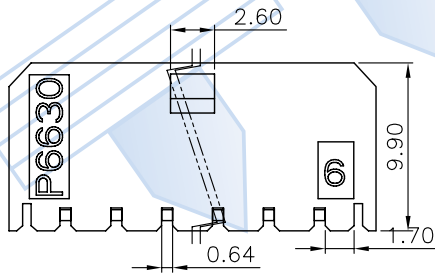
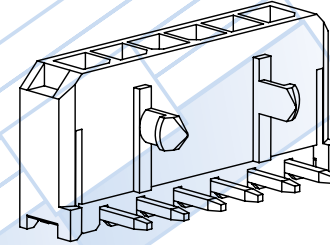
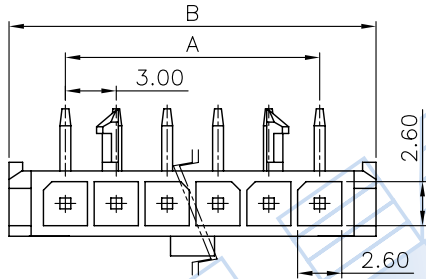


# 台灣駿品端子股份有限公司

TAIWAN KING PIN TERMINAL CO.,LTD

台北縣樹林市俊德街 23 號

TEL:886-2-26895596.26886112 FAX:886-2-26886110  
E-mail:info@tkp.com.tw http://www.tkp.com.tw



RECOMMENDED PCB LAYOUT

**NOTE :**

- \* Material : Nylon UL 94V-0(Lead Free)
- \* Color : Black
- \* Finish : Plated Tin/Lead over Nickel
- \* Current rating : 5A, AC/DC
- \* Voltage rating : 250V, AC/DC
- \* Mates with H6630R1 receptacle housings
- \* 2-12 circuits available
- \* Single row

CIRCUITS	PART NO.	DIM. A	DIM. B
2	P6630L-1x2(LF)	3.00	9.65
3	P6630L-1x3(LF)	6.00	12.65
4	P6630L-1x4(LF)	9.00	15.65
5	P6630L-1x5(LF)	12.00	18.65
6	P6630L-1x6(LF)	15.00	21.65
7	P6630L-1x7(LF)	18.00	24.65
8	P6630L-1x8(LF)	21.00	27.65
9	P6630L-1x9(LF)	24.00	30.65
10	P6630L-1x10(LF)	27.00	33.65
11	P6630L-1x11(LF)	30.00	36.65
12	P6630L-1x12(LF)	33.00	39.65

PART NO.	P6630L-1xX(LF)				Part NO.	Material	Color/Finish	Remark	APPROVAL
TITLE	3.00mm Wire to Wire								DRAWN: 黃元珍
THIRD ANGLE	SCALE	UNIT	SHEET NO	TOLERANCE	DATE	ODD NUMBERS	REV		CHECKED: 王忠
	2:1	mm	1/1	.X± 0.30 .XXX±0.10 .XX± 0.20 ANGLE±2°	2006.07.04	ENG950001	A0		APPROVED: 馮凌杰
	420-076		C420-017						