

SPECIFICATIONS

PROOF VOLTAGE: 1500V AC
CONTACT RESISTANCE: 20m Ω (max)
ELECTRICAL LIFE: 50,000 (min.)
MECHANICAL LIFE: 100,000 (min.)
CIRCUIT: SPST
CONTACT RATING: 1A 125V AC
 3A 125V AC

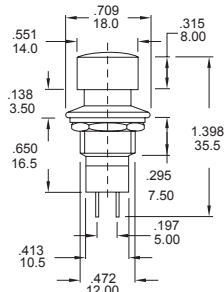
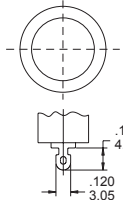
INSULATION RESISTANCE: 100M Ω

BUTTON COLOR CHART:

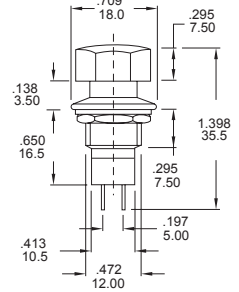
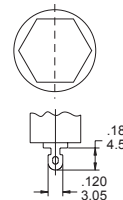
COLOR NO.	COLOR	COLOR NO.	COLOR
1	White	6	Green
2	Black	7	Blue
3	Red (Std.)	9	Gray
4	Orange		
5	Yellow		

3A 125V AC

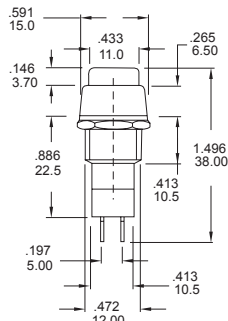
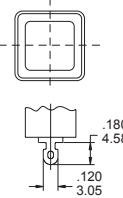

Model No.	TYPE
R18-21A	OFF-ON
R18-21B	OFF-(ON)


3A 125V AC

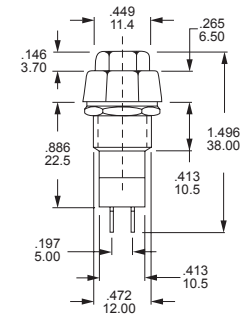
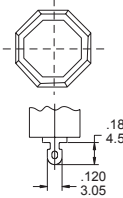

Model No.	TYPE
R18-22A	OFF-ON
R18-22B	OFF-(ON)


3A 125V AC

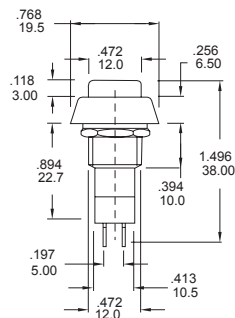
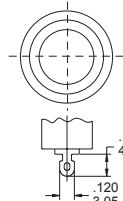

Model No.	TYPE
R18-23A	OFF-ON
R18-23B	OFF-(ON)


3A 125V AC

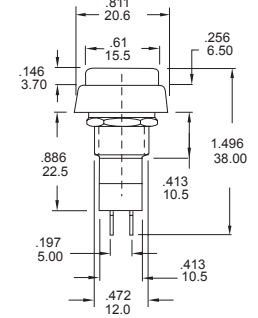
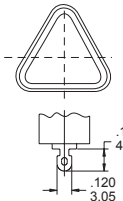

Model No.	TYPE
R18-24A	OFF-ON
R18-24B	OFF-(ON)


3A 125V AC

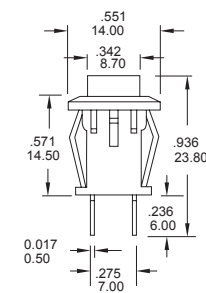
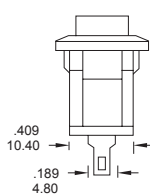

Model No.	TYPE
R18-25A	OFF-ON
R18-25B	OFF-(ON)


3A 125V AC

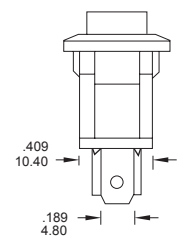
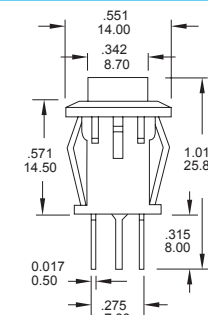
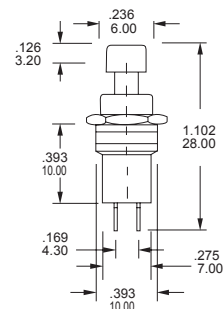
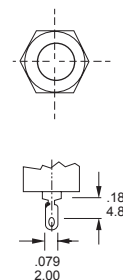

Model No.	TYPE
R18-26A	OFF-ON
R18-26B	OFF-(ON)


1A 125V AC


Model No.	TYPE
R18-27A	OFF-(ON)
R18-27B	ON-(OFF)


1A 125V AC


Model No.	TYPE
R18-28A	OFF-(ON)


1A 125V AC


Model No.	TYPE
R18-29A	OFF-(ON)
R18-29B	ON-(OFF)

D
19