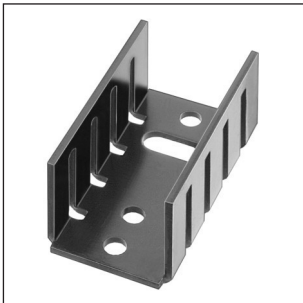


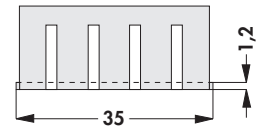
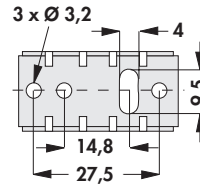
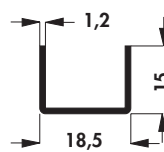
U-Kühlkörper

U-shaped heatsinks

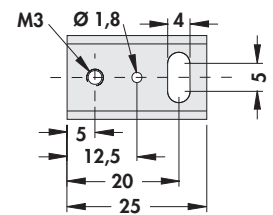
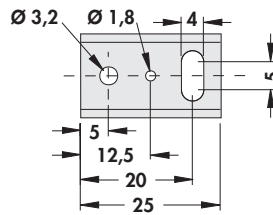
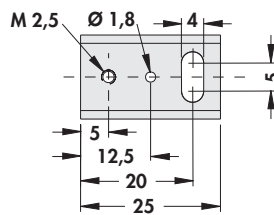
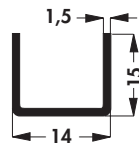
Dissipateurs en U



ICK 35 SA
15 K/W
TO 220



20 K/W
TO 220



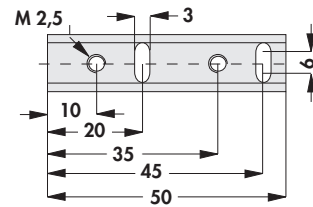
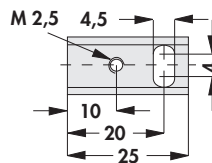
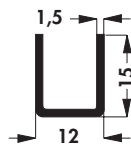
UK 14 SA 220

UK 14 SA 220 3.2

UK 14 SA M3



30 K/W
1 x SOT 32



SK 12 SA 32

SK 12 SA 2 x 32

30 K/W

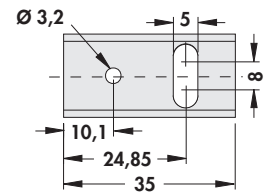
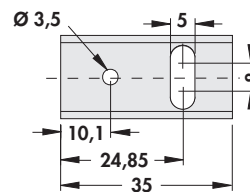
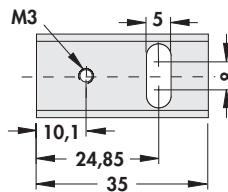
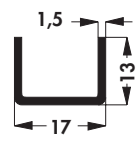
15 K/W

1 x SOT 32

2 x SOT 32



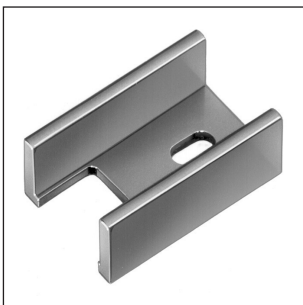
17 K/W
TO 220



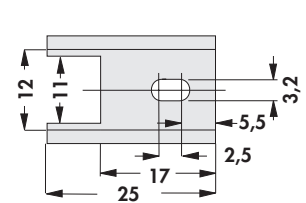
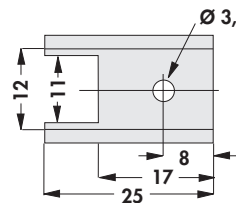
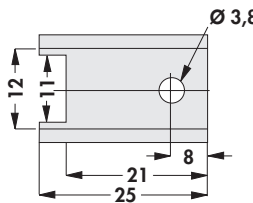
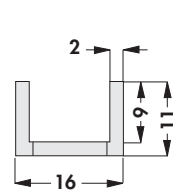
SK 13 35 SA 220

SK 13 35 SA 220 3.5

SK 13 35 SA 220 3.2



18 K/W
TO 220



SK 431-1

SK 431-2

SK 431-3

Oberfläche schwarz eloxiert

Surface black anodised

Finition anodisée noire

Transistorhaltefedern
Aufsetzkühlkörper für TO 220, 218 u.ä.
Aufsetzkühlkörper und Winkel für TO 3
Lamellenkühlkörper

Retaining springs for transistors
Set-up heatsinks for TO 220, 218 and similar
Set-up heatsinks and angle for TO 3
Fin coolers

Ressort de reteune pour transistors
Dissipateurs de capôt pour transistors to 220, 218
Dissipateurs de capôt et angle pour TO 3
Dissipateurs à lamelles

→ A 93 – 95
→ A 84
→ A 125
→ A 129 – 131