

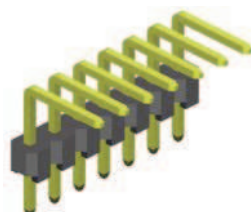
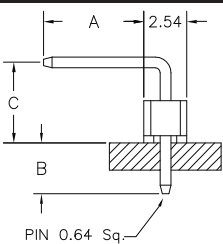
DOWN ANGLE PIN STYLE

Pin code	DIM "A" mm/inch	DIM "B" mm/inch	Pin code	DIM "A" mm/inch	DIM "B" mm/inch	Pin code	DIM "A" mm/inch	DIM "B" mm/inch	Pin code	DIM "A" mm/inch	DIM "B" mm/inch
100/03	2.50/.098	2.50/.098	125/11	5.60/.220	2.10/.083	176/01	7.00/.276	6.00/.236	170/02	8.80/.346	3.30/.130
103/01	2.75/.108	2.75/.108	132/01	5.70/.224	2.50/.098	147/03	7.40/.291	2.54/.100	165/01	9.00/.354	2.54/.100
105/02	2.80/.110	3.00/.118	133/01	5.70/.224	2.85/.112	133/03	7.50/.295	1.50/.059	184/05	9.40/.370	4.60/.181
106/01	2.80/.110	2.80/.110	155/02	5.70/.224	5.11/.201	136/06	7.50/.295	2.54/.100	176/03	9.70/.382	3.15/.124
108/01	3.00/.118	3.00/.118	126/02	5.80/.228	2.30/.091	140/04	7.80/.307	1.50/.059	203/04	9.70/.382	5.80/.228
116/03	3.00/.118	4.00/.157	140/05	5.80/.228	3.60/.142	155/05	7.80/.307	3.00/.118	181/01	9.90/.390	3.20/.126
106/02	3.30/.130	2.30/.090	140/11	5.80/.228	3.00/.118	136/01	8.00/.315	3.60/.142	180/05	9.96/.392	3.30/.130
111/01	3.50/.138	3.00/.118	141/01	5.80/.228	4.80/.189	184/04	8.00/.315	5.80/.228	251/01	10.00/.394	10.00/.394
116/04	3.50/.138	3.50/.138	159/01	5.90/.232	5.11/.201	187/02	8.00/.315	6.00/.236	184/09	10.40/.409	3.30/.130
108/02	3.60/.142	2.50/.098	125/16	6.00/.236	2.00/.079	182/01	8.10/.319	5.10/.201	186/01	10.70/.421	3.30/.130
111/02	3.70/.136	2.75/.108	140/01	6.00/.236	3.00/.118	155/04	8.20/.323	2.54/.100	203/05	12.00/.472	3.30/.130
120/01	4.50/.177	2.50/.098	140/09	6.20/.244	3.15/.124	159/04	8.20/.323	3.00/.118	203/03	12.50/.492	3.00/.118
125/07	4.50/.177	3.30/.130	149/01	6.70/.264	3.20/.126	203/06	8.23/.324	7.00/.276	203/02	13.00/.512	2.54/.100
125/06	4.70/.185	3.15/.124	148/01	6.75/.266	2.90/.114	246/01	8.30/.327	11.70/.461	209/01	13.10/.516	3.00/.118
147/04	4.80/.189	5.11/.201	147/02	6.90/.272	3.30/.130	159/02	8.50/.335	2.54/.100	216/03	13.60/.535	3.30/.130
125/09	5.30/.209	2.54/.100	140/03	7.00/.276	2.00/.079	165/02	8.60/.339	3.30/.130			
133/02	5.30/.209	3.30/.013	147/01	7.00/.276	3.00/.118	169/01	8.60/.339	3.30/.130			

Standard dimension & pin code

Many other dimensions available on request

UP ANGLE PIN STYLE



Pin code	DIM "A" mm/inch	DIM "B" mm/inch	DIM "C" mm/inch	Pin code	DIM "A" mm/inch	DIM "B" mm/inch	DIM "C" mm/inch
151/01	3.30/.130	7.00/.276	3.84/.151	160/05	6.00/.236	3.00/.118	6.04/.238
170/01	3.30/.130	8.60/.339	3.84/.151	175/03	6.00/.236	3.00/.118	7.54/.297
190/02	3.30/.130	10.60/.417	3.84/.151	155/03	6.20/.244	2.54/.100	6.30/.248
114/01	4.00/.157	2.60/.102	4.25/.167	130/01	7.00/.276	2.54/.100	3.00/.118
190/01	4.25/.167	3.00/.118	8.00/.315	184/15	7.00/.276	3.00/.118	6.35/.250
155/09	5.10/.201	3.10/.122	6.41/.252	184/06	8.00/.315	3.60/.142	6.30/.248
135/11	6.00/.236	3.00/.118	3.50/.138	149/02	9.70/.382	1.50/.059	2.80/.110
147/07	6.00/.236	3.00/.118	4.80/.189				

Specifications: Refer to straight pin headers

Many other dimensions available on request

How to order

SL x - xxx - X xxx/xx - 55

Rows	Nbr of pins	Pin style & Insulator	Pin code	Plating
1 = single row 2 = dual row 3 = triple row	single row = 002 to 040 dual row = 004 to 080 triple row = 009 to 120	R = Down angle (P.B.T. Insulator) RH = Down angle (Nylon Insulator) U = Up angle (P.B.T. Insulator) UH = Up angle (Nylon Insulator)	See above table	55 = gold (standard) 99 = tin (leadfree) 95 = tin/gold (tin leadfree) Other platings on request