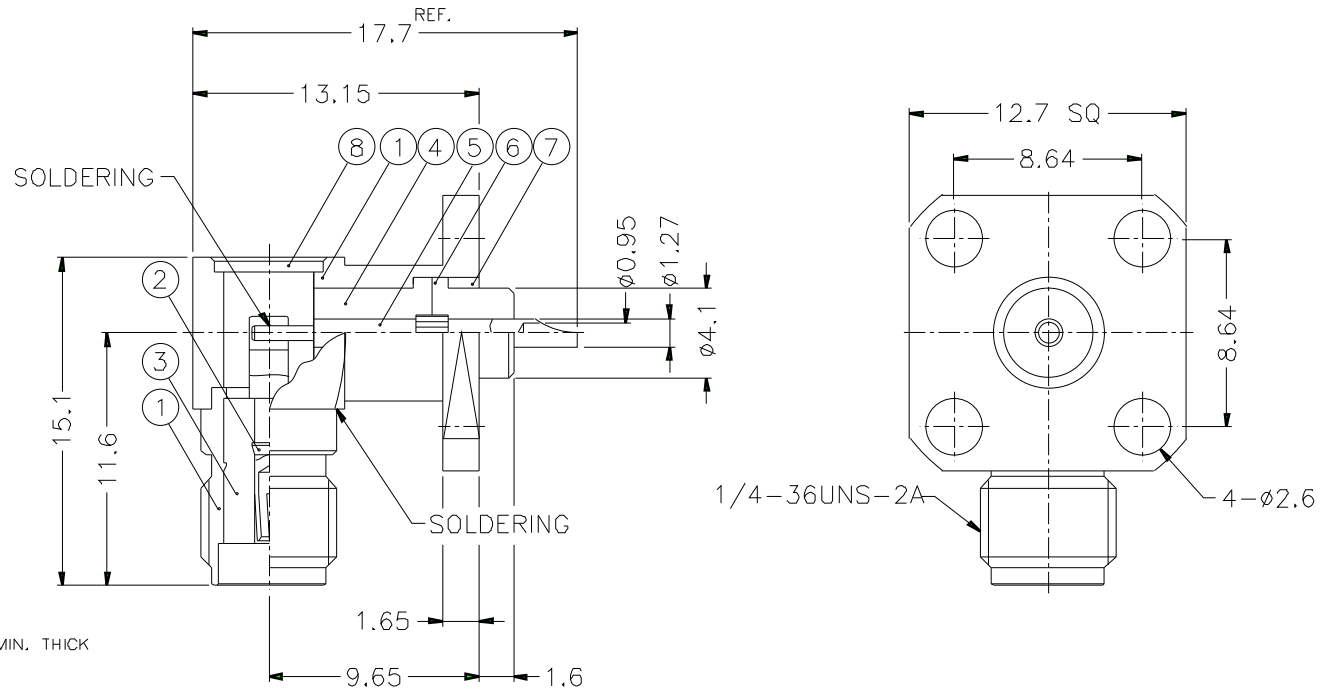


		1		2		3		4		5		6		7		8	
REVISIONS																	
ISS	ZONE	DESCRIPTION\PER REQUEST\DATE															



NOTES: FINISH (PLATING THICKNESS IN MICRO-INCHES)

1. BRASS PER QQ-B-626
2. BRASS PER QQ-B-613
3. GOLD PL. 3 MIN. THICK OVER NICKEL PL. 100 MIN. THICK OVER COPPER STRIKE
4. BERYLLIUM COPPER PER QQ-C-530
5. GOLD PL. 50 MIN. THICK OVER NICKEL PL. 100 MIN. THICK OVER COPPER STRIKE
6. TEFLON MIL-P-19468

8	COVER	NOTE 2	NOTE 3	1	CV-5X05-T
7	RING	NOTE 1	NOTE 3	1	SMA7530-5-B
6	INSULATOR	NOTE 6	NATURAL	1	SMA6552A1-6T-50
5	CONTACT PIN	NOTE 1	NOTE 5	1	SMA6552A1-5
4	INSULATOR	NOTE 6	NATURAL	1	SMA7530-2T-50-B
3	INSULATOR	NOTE 6	NATURAL	1	SMA6252A2-3T-50-B
2	CONTACT PIN	NOTE 4	NOTE 5	1	SMA6552E1-2
1	HOUSING WITH BODY	NOTE 1	NOTE 3	1	SMA6552E1-1S
NO.	DESCRIPTION	MATERIAL	FINISH	Q'TY	DRAWING NO.

DIMENSIONS ARE IN MILLIMETERS			PART NO. SMA6552A1-3GT50G-50	
UNLESS OTHERWISE SPECIFIED TOLERANCES			APPROVED	DATE
0.5-6	= ±0.2			10-11-01'
6-30	= ±0.4		CHECKED	DATE
30-120	= ±0.6			10-11-01'
120-315	= ±1		DRAWN	DATE
315-1000	= ±1.6			10-11-01'
1000-2000	= ±2.4		FILE NO.	

Amphenol	
TITLE SMA R/A PANEL JACK	
DRAWING NO. KJ-SMA6552A1-3GT50G-50	
ITEM NO.	

		1		2		3		4		5		6		7		8	
--	--	---	--	---	--	---	--	---	--	---	--	---	--	---	--	---	--