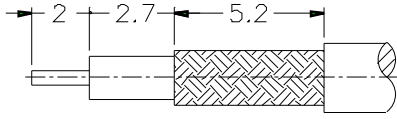
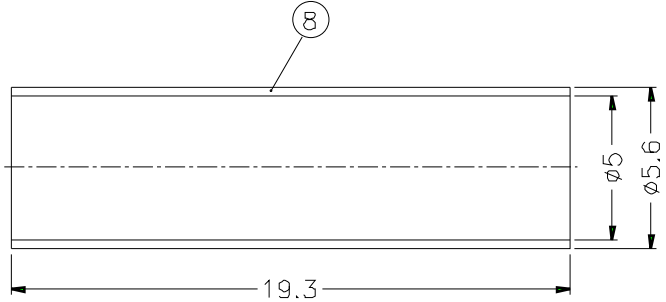
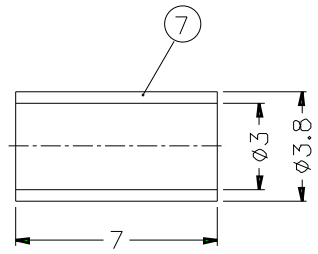
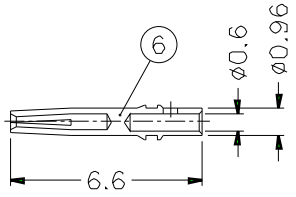
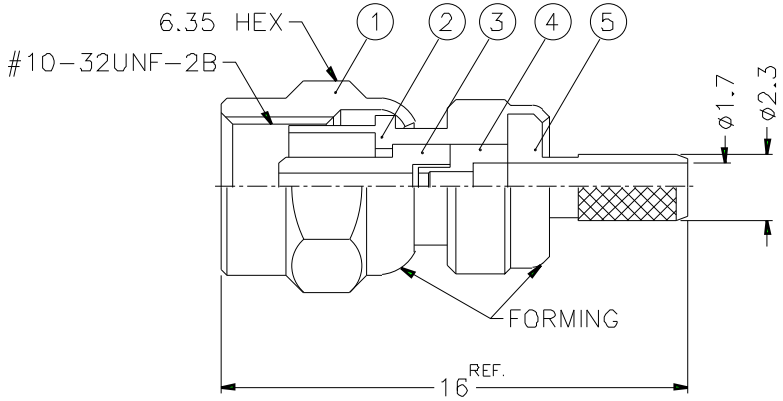


REVISIONS		
ISS	ZONE	DESCRIPTION\PER REQUEST\DATE



RECOMMENDED
CABLE STRIPPING DIM'S



1. CRIMPED FERRULE
HEX CRIMP SIZE .128"
2. CONTACT PIN TO SOLDER

- NOTES: FINISH (PLATING THICKNESS IN MICRO-INCHES)
- BRASS PER QQ-B-626
 - GOLD PL. 3 MIN. THICK OVER NICKEL PL. 100 MIN. THICK OVER COPPER STRIKE
 - BERYLLIUM COPPER PER QQ-C-530
 - GOLD PL. 30 MIN. THICK OVER NICKEL PL. 100 MIN. THICK OVER COPPER STRIKE
 - TEFLON MIL-P-19468

8	HEAT SHRINK TUBING			1	HT-56/5X193
7	FERRULE	COPPER	NOTE 2	1	FR-38/3X7C
6	CONTACT PIN	NOTE 3	NOTE 4	1	SMB6121B2-5-096/06-D
5	BARREL	NOTE 1	NOTE 2	1	SMB6121A1-4-23/17-C
4	INSULATOR	NOTE 5	NATURAL	1	SMB6121B2-3T-50
3	INSULATOR	NOTE 5	NATURAL	1	SMB6121A1-2T-50
2	BODY	NOTE 1	NOTE 2	1	SMC6121A1-2-B
1	SHELL	NOTE 1	NOTE 2	1	SMC6121A1-1
NO.	DESCRIPTION	MATERIAL	FINISH	Q'TY	DRAWING NO.

DIMENSIONS ARE IN MILLIMETERS		
UNLESS OTHERWISE SPECIFIED TOLERANCES		
0.5-6	=	±0.2
6-30	=	±0.4
30-120	=	±0.6
120-315	=	±1
315-1000	=	±1.6
1000-2000	=	±2.4

PART NO.	SMC6121A1-3GT30G-5-50
APPROVED	DATE 10-11-01'
CHECKED	DATE 10-11-01'
DRAWN	DATE 10-11-01'
FILE NO	

Amphenol	
TITLE	SMC CRIMP PLUG (RG-174/U,188A/U,316/U)
DRAWING NO.	KJ-SMC6121A1-3GT30G-316U-50
ITEM NO.	

1 2 3 4 5 6 7 8