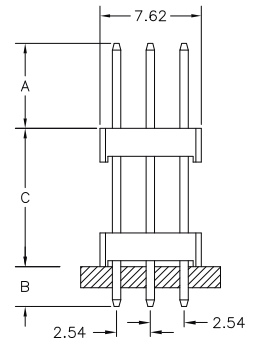
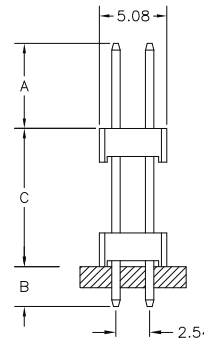
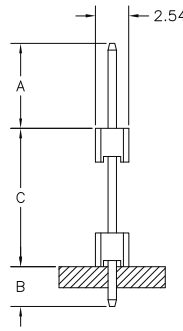
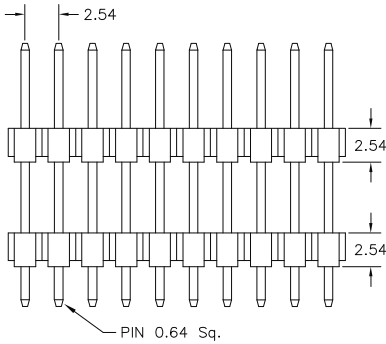
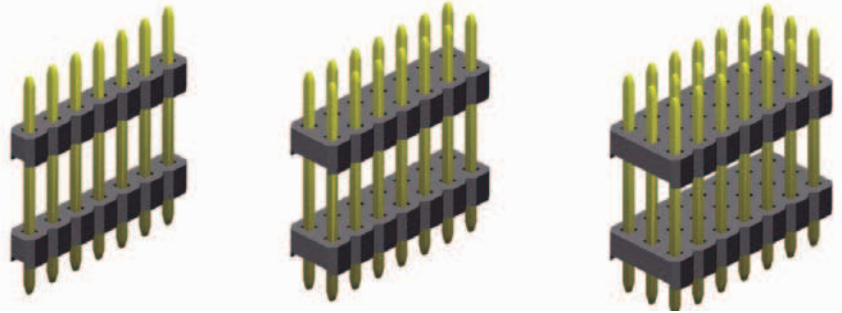


2.54mm pitch Board Spacer

- THT - single, dual & triple row



PIN STYLE

Pin code	DIM "A" mm/inch	DIM "B" mm/inch	DIM "C" mm/inch	Pin code	DIM "A" mm/inch	DIM "B" mm/inch	DIM "C" mm/inch
113 / 01	3.00/.118	3.30/.130	5.00/.197	240 / 03	6.00/.236	3.00/.118	15.00/.590
249 / 09	15.00/.590	3.90/.153	6.00/.236	249 / 06	6.00/.236	3.40/.134	15.50/.610
185 / 02	8.50/.335	3.00/.118	7.00/.276	290 / 04	6.50/.256	6.50/.256	16.00/.630
137 / 01	3.00/.118	2.30/.090	8.40/.331	249 / 08	5.30/.209	2.60/.102	17.00/.669
260 / 01	13.90/.547	3.60/.142	8.50/.335	216 / 05	1.95/.077	1.95/.077	17.70/.697
147 / 08	3.00/.118	3.00/.118	8.70/.343	263 / 01	5.50/.216	2.80/.110	18.00/.709
216 / 08	6.30/.248	6.30/.248	9.00/.354	340 / 01	9.00/.354	6.00/.236	19.00/.748
198 / 02	6.00/.236	3.00/.118	10.40/.409	290 / 01	6.50/.256	2.50/.098	20.00/.787
184 / 13	5.30/.209	2.50/.984	10.60/.417	276 / 01	3.20/.126	3.20/.126	21.20/.835
198 / 03	6.50/.256	2.70/.106	10.60/.417	308 / 03	6.00/.236	3.30/.130	21.50/.846
216 / 10	6.50/.256	3.60/.142	11.50/.453	342 / 01	6.10/.240	6.10/.240	22.00/.866
198 / 01	5.50/.217	2.50/.984	11.80/.465	342 / 02	3.00/.118	9.20/.362	22.00/.866
211 / 01	6.00/.236	2.90/.114	12.20/.480	352 / 01	3.00/.118	9.20/.362	23.00/.905
235 / 01	7.00/.275	3.60/.142	12.90/.508	378 / 02	7.30/.287	3.30/.130	27.20/1.071
255 / 01	9.00/.354	3.60/.142	12.90/.508	378 / 01	5.30/.209	2.50/.984	30.00/1.181
249 / 07	8.80/.346	2.50/.984	13.60/.535	408 / 04	5.80/.228	2.50/.984	32.50/1.280
216 / 02	5.30/.209	2.50/.984	13.80/.543	516 / 01	6.80/.268	3.30/.130	41.50/1.634
290 / 08	7.25/.285	7.25/.285	14.50/.571	606 / 01	6.00/.236	3.10/.122	51.50/2.028
238 / 01	5.90/.232	3.20/.126	14.70/.279				

Many other dimensions available on request

SPECIFICATIONS

Current rating	3 A	Operating temperature	- 40°C to +105°C
Insulator resistance	1000 MΩ min.	Insulator material (RoHS compliant)	P.B.T. or Nylon UL 94 V-0
Withstanding voltage	500 V AC	Contact material (RoHS compliant)	Standard : P.B.T.
Breakdown voltage	1800 VRMS min.		Brass

How to order

SP x - xxx - S xxx/xx - xx

Rows	Nbr of pins	Insulator	Pin code	Plating
1 = single row	single row = 002 to 040	S = P.B.T.	See above table	55 = gold (standard)
2 = dual row	dual row = 004 to 080	SH = Nylon		99 = tin (leadfree)
3 = triple row	triple row = 009 to 120			95 = tin/gold (tin leadfree)
				Other platings on request