



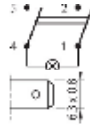
**SX82 Series | Illuminated double-pole switch 20A quick connection 6.3 black body**



sample image

**PRODUCT CODE: SX8211881G210000**

Wiring diagrams



Terminal type

Accessories

Body colour



Actuator colour



Marking



Marking colour



**Rating**

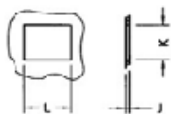
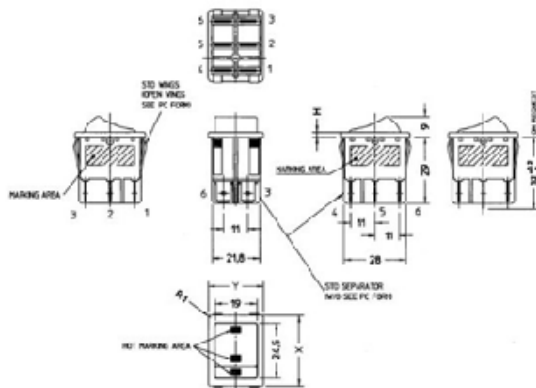
20 (2) A / 250 VAC  
 16 (8) A / 250 VAC  
 10 (6) A / 250 VAC - 5E4  
 T125/55 °C

20 A / 125 VAC  
 16 A / 250 VAC  
 3/4 HP - 125 VAC  
 3/4 HP - 250 VAC  
 T105 °C

**Approvals**



**Dimensions (mm)**



	W	X	Y	L	K	J
STANDARD	2	32	25	22-24	22-24	2,7-3,5
EMC GAP VERSION	2	32	25	22-24	22-24	2,7-3,5
SPECIAL FRAME	25	31,5	23,5	22,4	22-24	2,7-3,5
UK CUT OUT	2	30,2	22	21,2	22-24	2,7-3,5

Stampa scheda