



0.1 W - 10 mm size

0,1 W - Diam. 10 mm

0.1 W - 10 mm size

0,1 W - Diam 10 mm

Plastic case, screwdriver slot

Boiter plastique, fente tournevis

0.1 W - 10 mm size

0,1 W - Diam 10 mm

Plastic case, spindle slot

Boiter plastique, fente pour axe

0.2 W - 15 mm size

0,2 W - Diam. 15 mm

Plastic case, screwdriver slot

Boiter plastique, fente tournevis

0.2 W - 15 mm size

0,2 W - Diam. 15 mm

Plastic case, spindle slot

Boiter plastique, fente pour axe

Multiturn Carbon Presets

Ajustable multitours à carbone

Wirewound Presets

Ajustable bobinés

How to order

Désignation pour passer une commande



Carbon Preset Potentiometers

0,1 W - 10 mm size

Types
PR10 H
PR10 V

Mechanical data

Rotation angle: $220^{\circ}\text{C} \pm 5^{\circ}$
 Operating torque: $0.4 \pm 2 \text{ Ncm}$
 Permissible torque at end stop: 4 Ncm max
 Weight: $\sim 0.5 \text{ g}$

Screwdriver operation

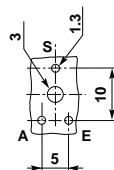
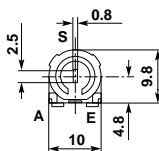
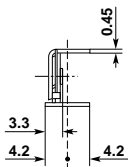
Electrical data

Rated dissipation @ 40°C : 0.1 W
 Limiting element voltage: 250 VDC
 Rated resistance: 100R to 4M Ω
 Rated resistance:
 • standard: E3 Series
 • optional: E6 Series
 Tolerance on rated resistance:
 • 100R to 1M Ω : $\pm 20\%$
 • over 1M Ω : $\pm 30\%$
 • optional (1K Ω to 1M Ω): $\pm 10\%$
 Resistance law: linear A



PR10H

Horizontal mounting

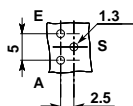
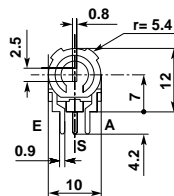
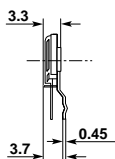


viewed on
component side



PR10V

Vertical mounting



viewed on
component side



Carbon Preset Potentiometers

0,1 W - 10 mm size

Plastic Case

Types
T10 FH
T10 FV

Mechanical data

Rotation angle: $270^\circ \pm 5^\circ$
 Operating torque: $0.4 \div 2 \text{ Ncm}$
 Permissible torque at end stop: 10 Ncm max
 Weight: $\sim 0.5 \text{ g}$

Switch version

Available as switch SPDT: see scheme and data below.

Types: **T10 FH SPDT; T10 FV SPDT**

Electrical data

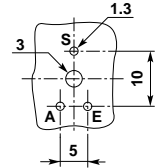
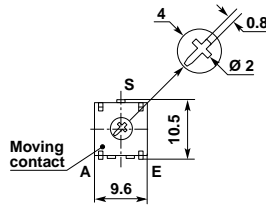
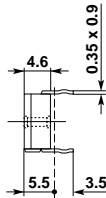
Rated dissipation @ 40° : 0.1 W
 Limiting element voltage: 250 VDC
 Rated resistance: $100\text{R to }4\text{M}7$
 • standard: E3 Series
 • optional: E6 Series
 Tolerance on rated resistance:
 • $100\text{R to }1\text{M}0$ $\pm 20\%$
 • over $1\text{M}0$ $\pm 30\%$
 • optional ($1\text{K}0$ to $1\text{M}0$): $\pm 10\%$
 Resistance law: linear A

NEW



T10 FH

Horizontal mounting
 Insulated screwdriver slot.

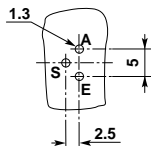
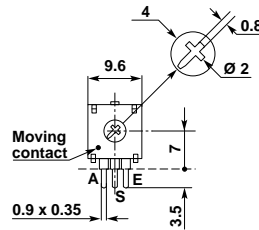
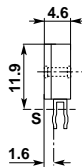


viewed on
 component side

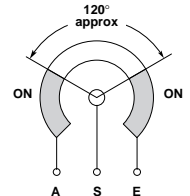


T10 FV

Vertical mounting
 Insulated screwdriver slot.



viewed on
 component side



Drawings show the moving contact in full anti-clockwise position (start of travel).

Switch scheme
 Breaking capacity: $15 \text{ mA} - 24 \text{ VDC}$
 Resistance: $10 \Omega \text{ max}$



Carbon Preset Potentiometers

0,1 W - 10 mm size Plastic Case

Type
T10 H

Mechanical data

Rotation angle: $270^\circ \pm 5^\circ$
 Operating torque: $0.4 \div 2 \text{ Ncm}$
 Permissible torque at end stop: 10 Ncm max
 Weight: $\sim 0.5 \text{ g}$

Switch version

Available as switch SPDT: see scheme and data at p. 40.
 Type: **T10 H SPDT**

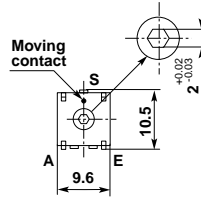
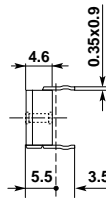
Electrical data

Rated dissipation @ 40° : 0.1 W
 Limiting element voltage: 250 VDC
 Rated resistance: $100\text{R to }4\text{M}\Omega$
 • standard: E3 Series
 • optional: E6 Series
 Tolerance on rated resistance:
 • $100\text{R to }1\text{M}\Omega$: $\pm 20\%$
 • over $1\text{M}\Omega$: $\pm 30\%$
 • optional ($1\text{K}\Omega$ to $1\text{M}\Omega$): $\pm 10\%$
 Resistance law: linear A

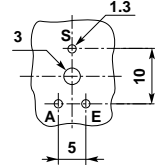


T10 H

Horizontal mounting
 Spindle slot



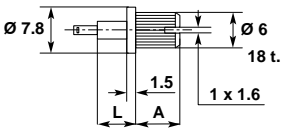
Drawing shows the moving contact in the middle of travel.



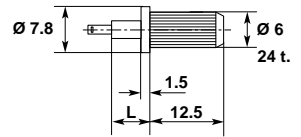
viewed on component side

Plastic spindle type P 10

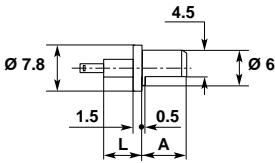
A snap-in plastic spindle, available on request, can be inserted, both sides, after the potentiometer has been soldered on the printed circuit board.



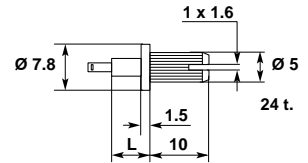
F310 A = 7.5 mm
 F320 A = 12.5 mm



F350

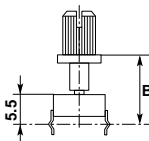


F330 A = 7 mm
 F340 A = 12 mm

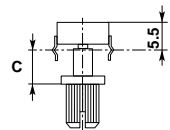


F360

Available lengths: L = 2 - 5 - 9 - 14 - 19 - 24 mm



| | | | | | | |
|--------|---|----|----|----|----|----|
| L = mm | 2 | 5 | 9 | 14 | 19 | 24 |
| B = mm | 8 | 11 | 15 | 20 | 25 | 30 |
| C = mm | 0 | 3 | 7 | 12 | 17 | 22 |





Mechanical data

Rotation angle: $270^\circ \pm 5^\circ$
 Operating torque: $0.4 \div 2 \text{ Ncm}$
 Permissible torque at end stop: 10 Ncm max
 Weight: $\sim 0.5 \text{ g}$

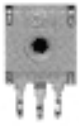
Switch version

Available as switch SPDT: see scheme and data at p. 40.
 Type: **T10 V SPDT**

Electrical data

Rated dissipation @ 40° : 0.1 W
 Limiting element voltage: 250 VDC
 Rated resistance: $100\text{R to }4\text{M}\Omega$
 • standard: E3 Series
 • optional: E6 Series
 Tolerance on rated resistance:
 • 100R to 1M Ω : $\pm 20\%$
 • over 1M Ω : $\pm 30\%$
 • optional (1K Ω to 1M Ω): $\pm 10\%$
 Resistance law: linear A

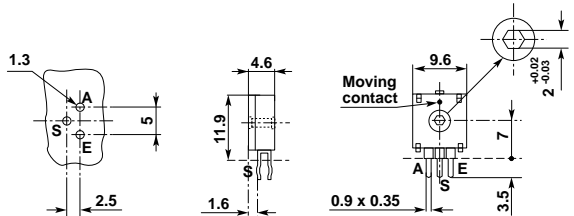
NEW



T10 V

Vertical mounting
 Spindle slot

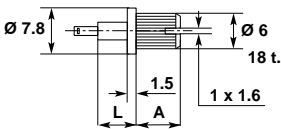
viewed on component side



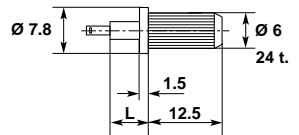
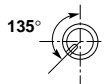
Drawing shows the moving contact in the middle of travel.

Plastic spindle type P 10

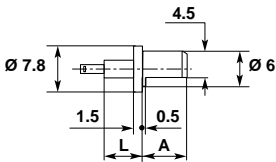
A snap-in plastic spindle, available on request, can be inserted, both sides, after the potentiometer has been soldered on the printed circuit board.



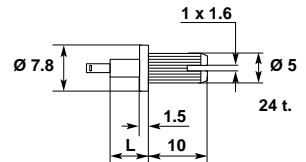
F310 A = 7.5 mm
 F320 A = 12.5 mm



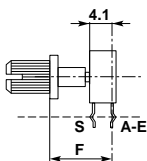
F350



F330 A = 7 mm
 F340 A = 12 mm

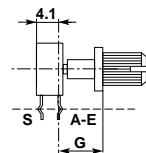


F360



Available lengths: L = 2 - 5 - 9 - 14 - 19 - 24 mm

| | | | | | | |
|--------|-----|-----|-----|------|------|------|
| L = mm | 2 | 5 | 9 | 14 | 19 | 24 |
| F = mm | 6 | 9 | 13 | 18 | 23 | 28 |
| G = mm | 1,5 | 4,5 | 8,5 | 13,5 | 18,5 | 23,5 |





Carbon Preset Potentiometers

0,2 W - 15 mm size Plastic Case

Types
TR15FH
TR15FV 10

Mechanical data

Rotation angle: $240^\circ \pm 5^\circ$
 Operating torque: $0.5 \div 3.5$ Ncm
 Permissible torque at end stop: 10 Ncm max
 Weight: ~ 1.5 g

Electrical data

Rated dissipation @ 40°: 0.2 W
 Limiting element voltage: 350 VDC
 Rated resistance: 100R to 4M Ω
 • standard: E3 Series
 • optional: E6 Series
 Tolerance on rated resistance:
 • 100R to 1M Ω : $\pm 20\%$
 • over 1M Ω : $\pm 30\%$
 • optional (1K Ω to 1M Ω): $\pm 10\%$
 Resistance law: linear A

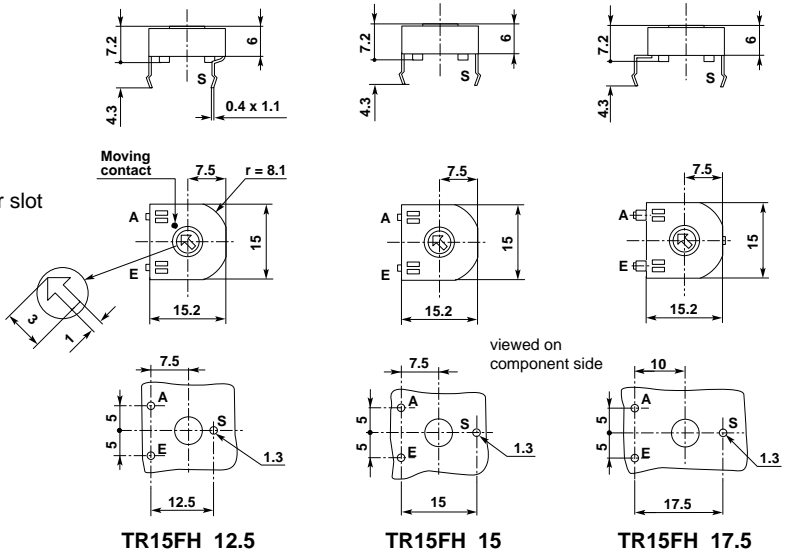
Switch version

Available as switch SPDT: see scheme and data below.

Types: TR15FH 12.5 SPDT; TR15FH 15 SPDT;
TR15FH 17.5 SPDT



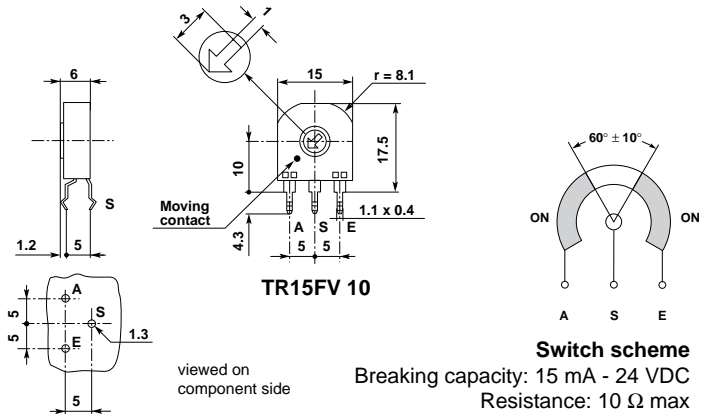
TR15FH
Horizontal mounting
Insulated screwdriver slot



Drawings show the moving contact in full anti-clockwise position (start of travel).



TR15FV 10
Vertical mounting
Insulated screwdriver slot



Switch scheme
 Breaking capacity: 15 mA - 24 VDC
 Resistance: 10 Ω max



Carbon Preset Potentiometers

0,2 W - 15 mm size

Plastic Case

Types

P15H

Mechanical data

Rotation angle: $240^\circ \pm 5^\circ$
 Operating torque: $0,5 \div 3,5$ Ncm
 Permissible torque at end stop: 10 Ncm max
 Weight: $\sim 1,5$ g

Switch version

Available as switch SPDT: see scheme and data at p. 43.

Types: **P15H 12.5 SPDT; P15H 15 SPDT; P15H 17.5 SPDT**

Electrical data

Rated dissipation @ 40°C: 0.2 W
 Limiting element voltage: 350 VDC
 Rated resistance: 100R to 4M7
 • standard: E3 Series
 • optional: E6 series
 Tolerance on rated resistance:
 • 100R to 1M0: $\pm 20\%$
 • over 1M0: $\pm 30\%$
 • optional (1K0 to 1M0): $\pm 10\%$
 Resistance law: linear A

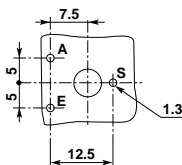
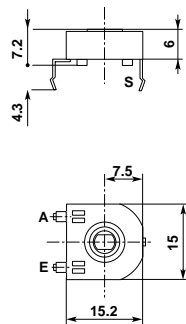
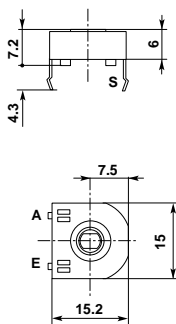
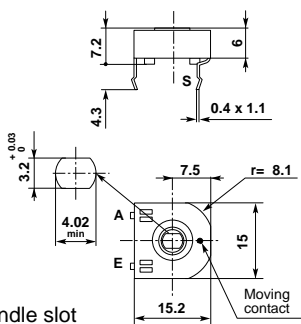
NEW



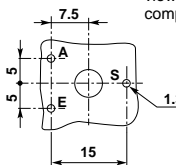
P15H

Horizontal mounting

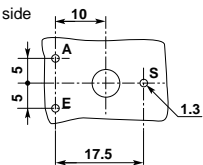
Standard spindle slot



P15H 12.5



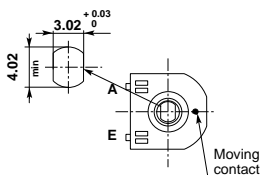
P15H 15



P15H 17.5

viewed on component side

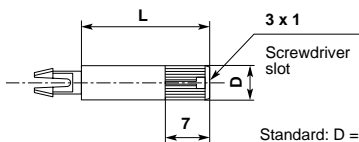
Drawings show the moving contact in the middle of travel.



Optional spindle slot

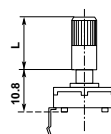
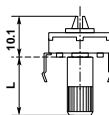
Plastic spindles type P15

A snap-in plastic spindle, available on request, can be inserted, both sides, after the potentiometer has been soldered on the printed circuit board.



D = 4 mm; without screwdriver slot

Standard: D = 6 mm L = 50 mm
 Available: D = 6 mm L = 8-12-14-20-30-40-60 mm
 D = 4 mm L = 14-20-30-40-50-60 mm





Carbon Preset Potentiometers

0,2 W - 15 mm size

Plastic Case

Type
P15V 10

Mechanical data

Rotation angle: $240^\circ \pm 5^\circ$
 Operating torque: $0.5 \div 3.5$ Ncm
 Permissible torque at end stop: 35 Ncm max
 Weight: ~ 1.5 g

Switch version

Available as switch SPDT: see scheme and data at p. 43.
 Type: **P15V 10 SPDT**

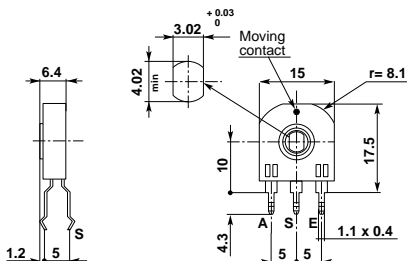
Electrical data

Rated dissipation @ 40°C : 0.2 W
 Limiting element voltage: 350 VDC
 Rated resistance: 100R to $4\text{M}7$
 • standard: E3 Series
 • optional: E6 Series
 Tolerance on rated resistance:
 • 100R to $1\text{M}0$: $\pm 20\%$
 • over $1\text{M}0$: $\pm 30\%$
 • optional ($1\text{K}0$ to $1\text{M}0$): $\pm 10\%$
 Resistance law: linear A

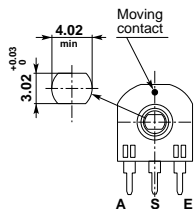


P15V 10

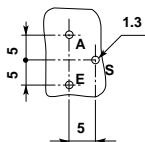
Vertical mounting



Standard spindle slot



Optional spindle slot

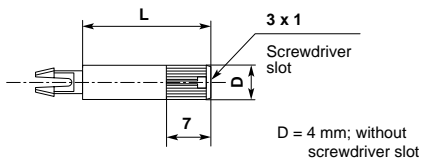


viewed on component side

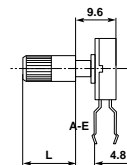
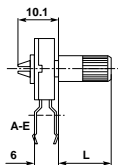
Drawings show the moving contact in the middle of travel.

Plastic spindle type P15

A snap-in plastic spindle, available on request, can be inserted, both sides, after the potentiometer has been soldered on the printed circuit board.



D = 4 mm: without screwdriver slot



Standard: D = 6 mm L = 50 mm
 Available: D = 6 mm L = 8-12-14-20-30-40-60 mm
 D = 4 mm L = 14-20-30-40-50-60 mm



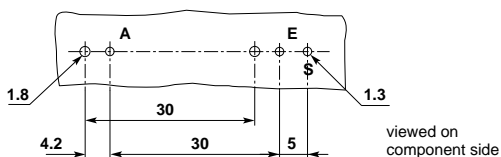
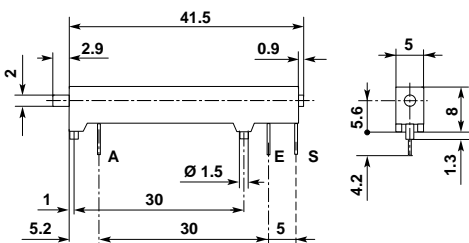
Mechanical data

Travel: 25 mm
 Operating torque: $0.3 \div 1$ Ncm
 Permissible axial spindle load: 2.5 N max
 Life: 5,000 cycles
 Weight: ~3 g

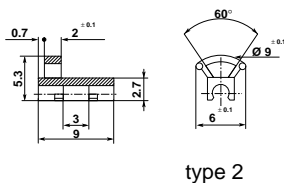
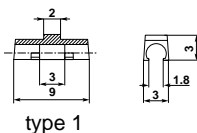
Precision preset potentiometers

Electrical data

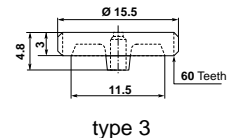
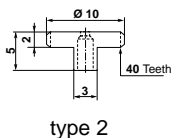
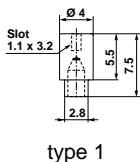
Rated dissipation @ 40°C: 0.25 W linear law
 0.15 W non-linear law
 Limiting element voltage: 350 VDC
 Rated resistance: 100R to 4M Ω
 • standard: E3 series
 • optional: E6 series
 Tolerance on rated resistance:
 • 100R to 1M Ω : $\pm 20\%$
 • over 1M Ω : $\pm 30\%$
 • optional (1K Ω to 1M Ω): $\pm 10\%$
 Resistance law: linear A
 Varicap TV tuner law 100 KV



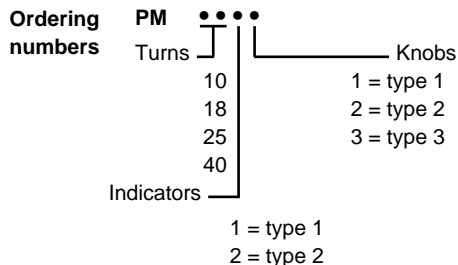
Indicator variations



Knob variations



| Types | Turns | Rotation (1) |
|-------|-------|--------------|
| PM10 | 10 | CCW |
| PM18 | 18 | CW |
| PM25 | 25 | CCW |
| PM40 | 40 | CCW |



(1) Increasing resistance value between A and S terminations.

Standard type: PM 4011



Wirewound Preset Potentiometers

3 W - 20 mm size

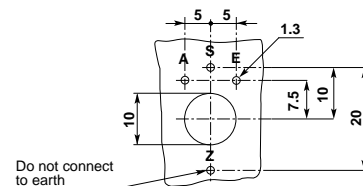
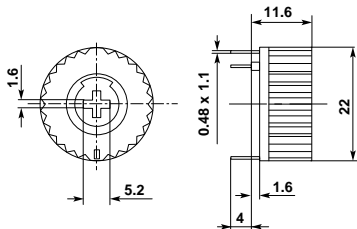
Types
PB3
PB3A

Mechanical data

Rotation angle: $260^\circ \pm 5^\circ$
 Operating torque: $0.5 \div 3.5$ Ncm
 Permissible torque at end stop: 20 Ncm max
 Weight: ~ 6 g

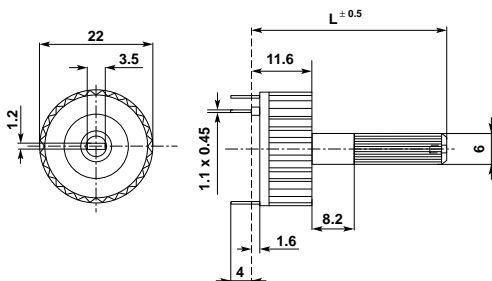
Electrical data

Rated dissipation @ 40°C : 3 W
 Insulation voltage: 300 VAC
 Rated resistance: 3R3 to 2K2 E12 Series
 Tolerance on rated resistance:
 3R3 to 4R7: $\pm 20\%$
 6R8 to 2K2: $\pm 10\%$
 Resistance law: linear A
 Tap: at 50% of rotation
 Operating temperature: -25°C to $+90^\circ\text{C}$



Types

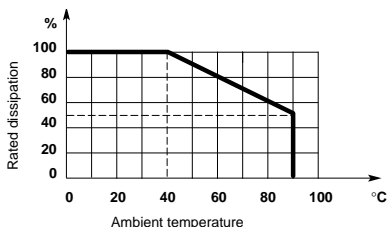
| | |
|-------|-------------|
| PB3 | Without tap |
| PB3 P | With tap |



Types

| | |
|--------|-------------|
| PB3 A | Without tap |
| PB3 AP | With tap |

Derating curve

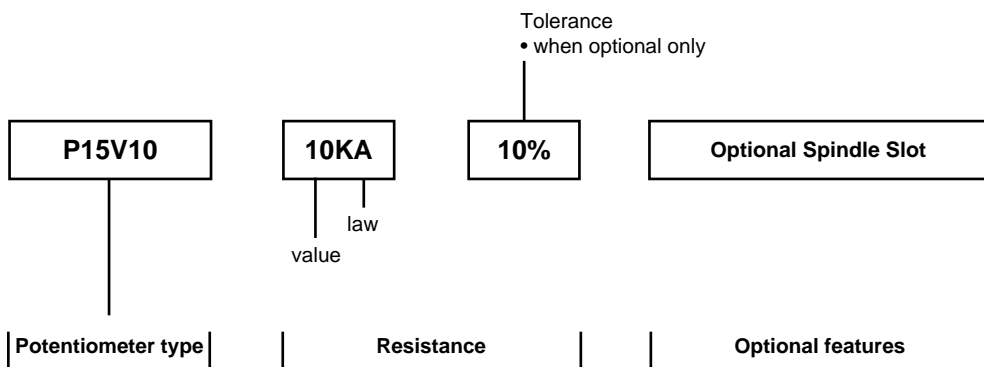


Available spindles - for PB3A & PB3AP
 Standard: L = 50 mm
 Optional: L = 25-28-33-40-45-55-60-64-71 mm



How to order

Désignation pour passer une commande



- Resistance law: see p. 29.

Available resistance values, resistance law, optional tolerance and optional features are specified on the pages describing each preset type.