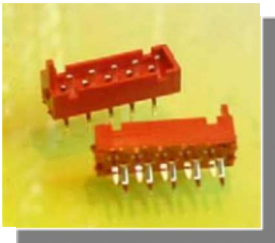


**TMM**

TMM Series  
1.27mm pitch



- **X**      **-X**      **-XX**      **-X**

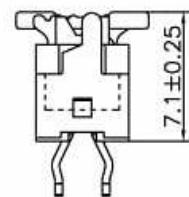
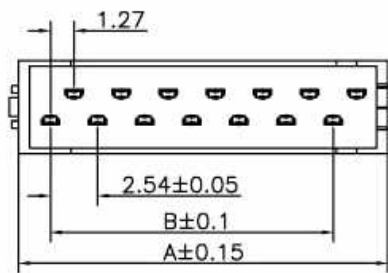
**Type**  
 1=IDC Male  
 2=IDC Transition Plug  
 3=DIP Male Straight  
 4=DIP Female Straight  
 5=DIP Female R/A  
 6=SMT Female Straight

**Locking**  
 L= with Lock  
 0= w/o Lock

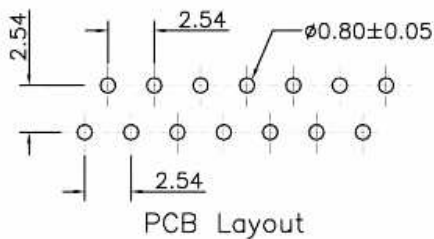
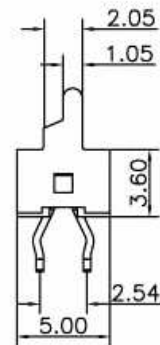
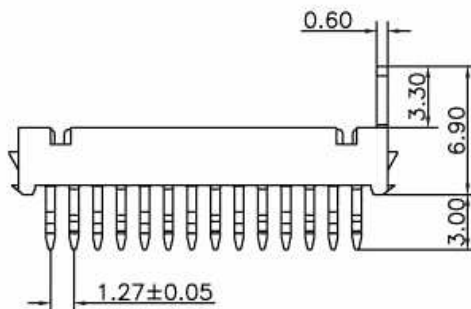
**No. of Positions**  
 04= 04 Positions  
 :  
 :  
 26= 26 Positions

**Packaging**  
 1= Tape&Reel+cap  
 2= Tube  
 3= Bag  
 4= Tape&Reel w/o cap

**TMM-3**  
(Dip Male ST)



Mating Height Draw.



Circuits	Dimension		Circuits	Dimension		Circuits	Dimension	
	A	B		A	B		A	B
4	7.20	2.54	12	17.36	12.70	20	27.52	22.86
6	9.74	5.08	14	19.90	15.24	22	30.06	25.40
8	12.28	7.62	16	22.44	17.78	24	32.60	27.94
10	14.82	10.16	18	24.98	20.32	26	35.14	30.48

**General Specification**

<p><b>Materials and Finish :</b></p> <p><b>Insulator:</b> Glass-reinforce thermoplastic, UL 94V-0, Nylon, Color in Red.  <b>Contact :</b> Phosphor Bronze, Tin plated.</p>	<p><b>Electrical :</b></p> <p><b>Contact Resistance:</b> 20 mΩ max. at 1.5A DC  <b>Insulation Resistance:</b> 1000 MΩ min, at 500 V/DC.  <b>Dielectric Withstanding Voltage :</b> 500 V AC/RMS 60Hz for one minute.  <b>Current Rating :</b> 1.5A max,  <b>Voltage Rating :</b> 230V AC/RMS 60Hz, DC</p>	<p><b>Environment :</b></p> <p><b>Operating Temperature:</b>              -40 degree C to +105 degree C</p>
--	--	---