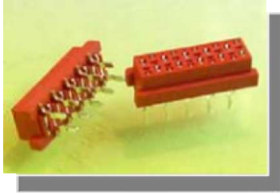


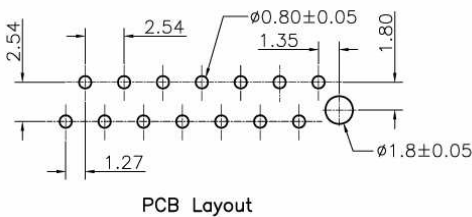
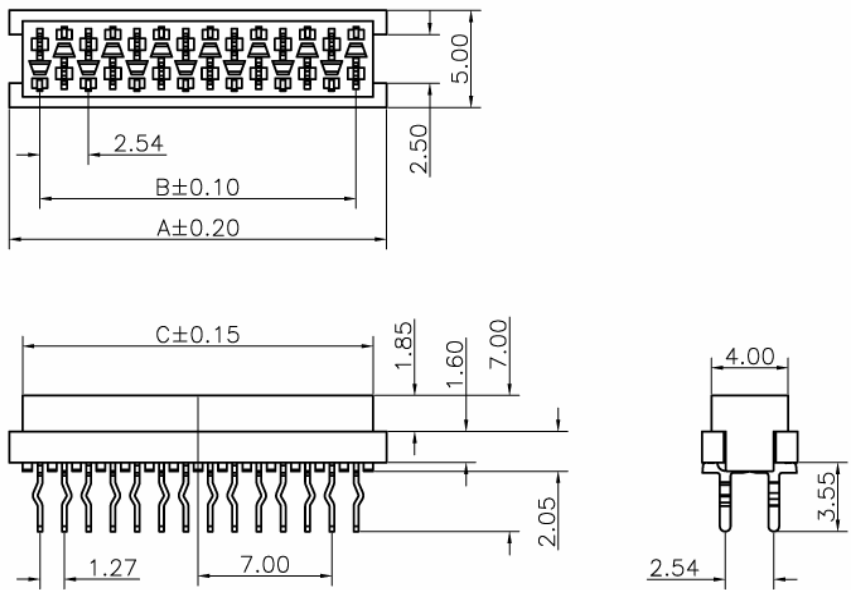
TMM

TMM Series  
1.27mm pitch



X	-X	-XX	-X
<b>Type</b> 1=IDC Male 2=IDC Transition Plug 3=DIP Male Straight 4=DIP Female Straight 5=DIP Female R/A 6=SMT Female Straight	<b>Locking</b> L= with Lock 0= w/o Lock	<b>No. of Positions</b> 04= 04 Positions : : 26= 26 Positions	<b>Packaging</b> 1= Tape&Reel+cap 2= Tube 3= Bag 4= Tape&Reel w/o cap

**TMM-4-0**  
(Dip Female ST)



Pos	A	B	C	Pos	A	B	C
4	7.00	3.81	5.60	16	22.24	19.05	20.84
6	9.54	6.35	8.14	18	24.78	21.59	23.38
8	12.08	8.89	10.68	20	27.32	24.13	25.92
10	14.62	11.43	13.22	22	29.86	26.67	28.46
12	17.16	13.97	15.76	24	32.40	29.21	31.00
14	19.70	16.51	18.30	26	34.94	31.75	33.54

**General Specification**

<p><b>Materials and Finish :</b></p> <p><b>Insulator:</b> Glass-reinforce thermo plastic, UL 94V-0, Nylon, Color in Red.</p> <p><b>Contact :</b> Phosphor Bronze, Tin plated.</p>	<p><b>Electrical :</b></p> <p><b>Contact Resistance:</b> 20 mΩ max. at 1A DC</p> <p><b>Insulation Resistance:</b> 1000 MΩ min, at 500 V/DC.</p> <p><b>Dielectric Withstanding Voltage :</b> 500 V AC/RMS 60Hz for one minute.</p> <p><b>Current Rating :</b> 1.5A max.</p> <p><b>Voltage Rating :</b> 230V AC/RMS 60Hz, DC</p>	<p><b>Envirement :</b></p> <p><b>Operating Temperature:</b> -40 degree C to +105 degree C</p>
---	--	---