

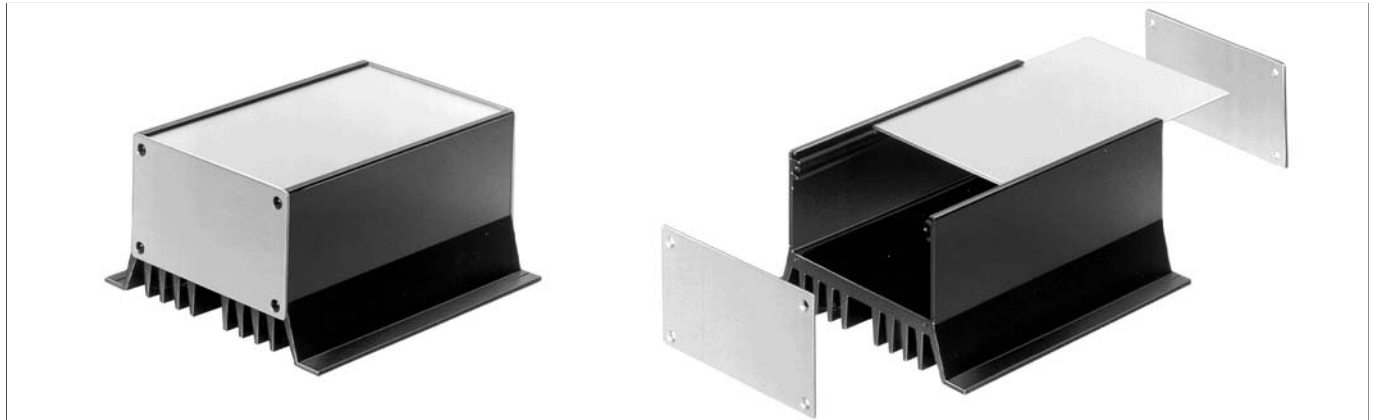
A

**Cooling cases**

B

C

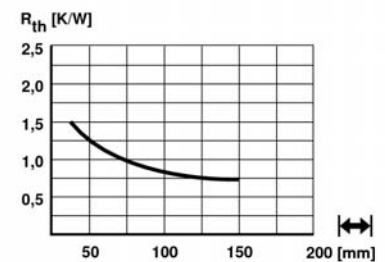
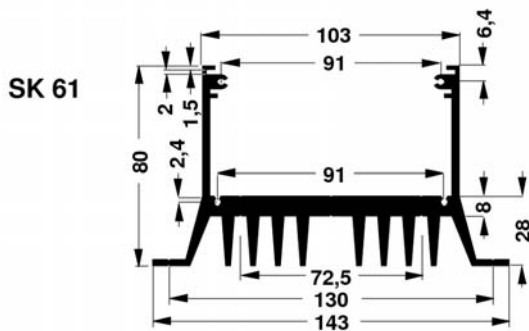
D



- solid profile case with integrated cooling fins; extendable cover panel and screwmounted 2 mm cover panels
- further dimensions and surface treatments upon request

E

F



| art. no.                | dim. [mm]<br>available external length   |
|-------------------------|--|
| <b>WAG 100 ...</b>      | 104  |
| <b>WAG 120 ...</b>      | 124  |
| <b>WAG 160 ...</b>      | 164  |
| <b>WAG 200 ...</b>      | 204  |
| <b>WAG 220 ...</b>      | 224  |
| <b>please indicate:</b> | <b>... surface</b><br><b>SA = black anodised</b><br><b>ME = clear anodised</b><br><b>MS = case profile SA, cover panels ME</b> |

profiles in meter lengths 1000 mm → M 35

K

L

M

N

**M 31**
**Cooling case**  
**Case with cooling fins**  
**Desk consoles**  
**Euro case**

 → M 31 – 34  
 → M 34  
 → M 8  
 → M 9

**Miniature aluminium case**  
**cable bushings**  
**Design case Chac**  
**Design case Frame**

 → M 25 – 29  
 → M 46  
 → M 38  
 → M 39